

Operations Performance Metrics Monthly Report



February 2022 Report

Operations & Reliability Department New York Independent System Operator

Prepared by NYISO Operations Analysis and Services, based on settlements initial invoice data collected on or before March 8, 2022.

Table of Contents

- ◆ **Highlights**
 - *Operations Performance*

- ◆ **Reliability Performance Metrics**
 - *Alert State Declarations*
 - *Major Emergency State Declarations*
 - *IROL Exceedance Times*
 - *Balancing Area Control Performance*
 - *Reserve Activations*
 - *Disturbance Recovery Times*
 - *Load Forecasting Performance*
 - *Wind Forecasting Performance*
 - *Wind Performance and Curtailments*
 - *BTM Solar Performance*
 - *BTM Solar Forecasting Performance*
 - *Net Wind and Solar Performance*
 - *Net Load Forecasting Performance*
 - *Lake Erie Circulation and ISO Schedules*

- ◆ **Broader Regional Market Performance Metrics**
 - *PAR Interconnection Congestion Coordination Monthly Value*
 - *PAR Interconnection Congestion Coordination Daily Value*
 - *Regional Generation Congestion Coordination Monthly Value*
 - *Regional Generation Congestion Coordination Daily Value*
 - *Regional RT Scheduling - PJM Monthly Value*
 - *Regional RT Scheduling - PJM Daily Value*

- ◆ **Market Performance Metrics**
 - *Monthly Statewide Uplift Components and Rate*
 - *RTM Congestion Residuals Monthly Trend*
 - *RTM Congestion Residuals Daily Costs*
 - *RTM Congestion Residuals Event Summary*
 - *RTM Congestion Residuals Cost Categories*
 - *DAM Congestion Residuals Monthly Trend*
 - *DAM Congestion Residuals Daily Costs*
 - *DAM Congestion Residuals Cost Categories*
 - *NYCA Unit Uplift Components Monthly Trend*
 - *NYCA Unit Uplift Components Daily Costs*
 - *Local Reliability Costs Monthly Trend & Commitment Hours*
 - *TCC Monthly Clearing Price with DAM Congestion*
 - *ICAP Spot Market Clearing Price*
 - *UCAP Awards*

February 2022 Operations Performance Highlights

- Peak load of 22,477 MW occurred on 2/14/2022 HB 18
- All-time winter capability period peak load of 25,738 MW occurred on 01/07/2014 HB 18
- 19.4 hours of Thunderstorm Alerts were declared
- 123 hours of NERC TLR level 3 curtailment called in response to high levels of clockwise loop flow impacting NY congestion.
- NYISO began securing Meyer 230/115kV Bk4 facility in the Real-Time Market on 02/23/2022 and in the Day-Ahead Market execution occurring on 02/24/2022 for the 02/25/2022 market day.
- To reduce risks from COVID-19, the NYISO continues to take several actions to maintain critical business operations and protect the health and well-being of our employees and stakeholders.

The following table identifies the estimated production cost savings associated with the Broader Regional Market initiatives.

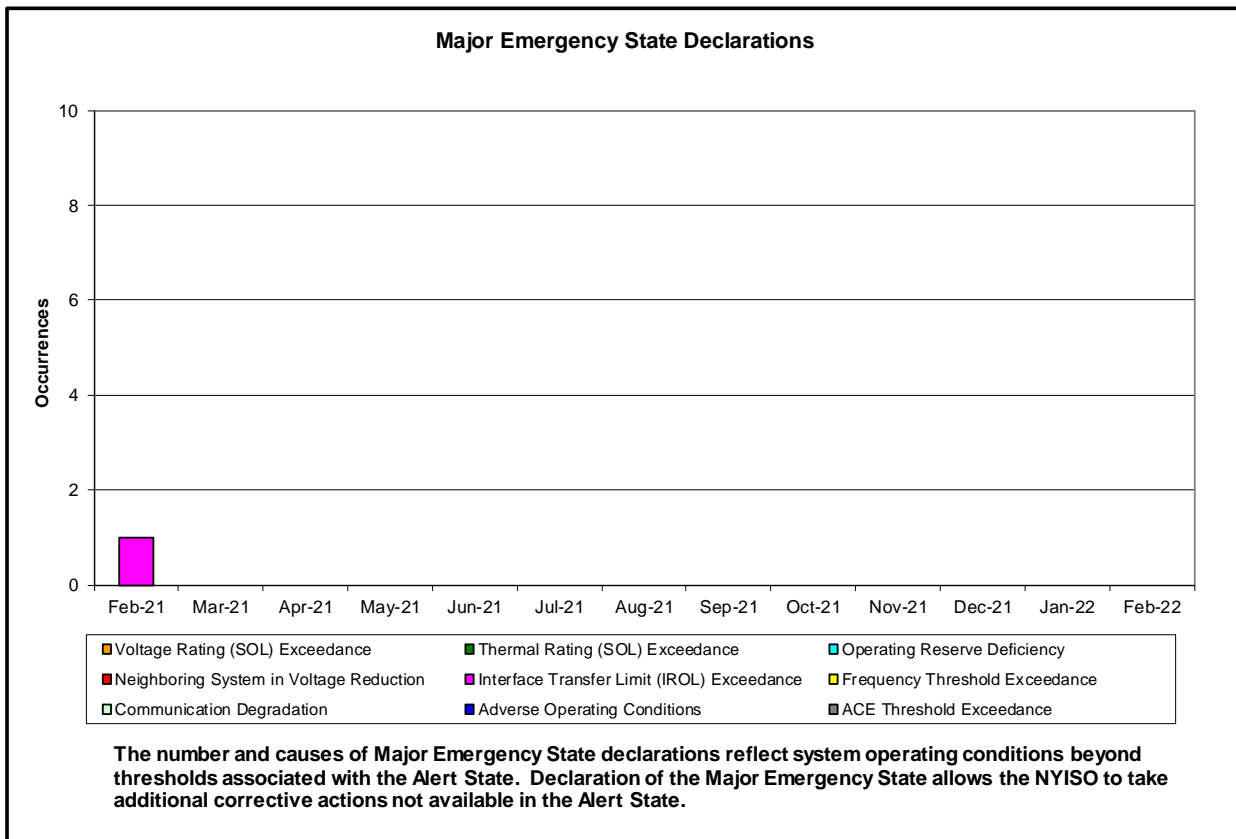
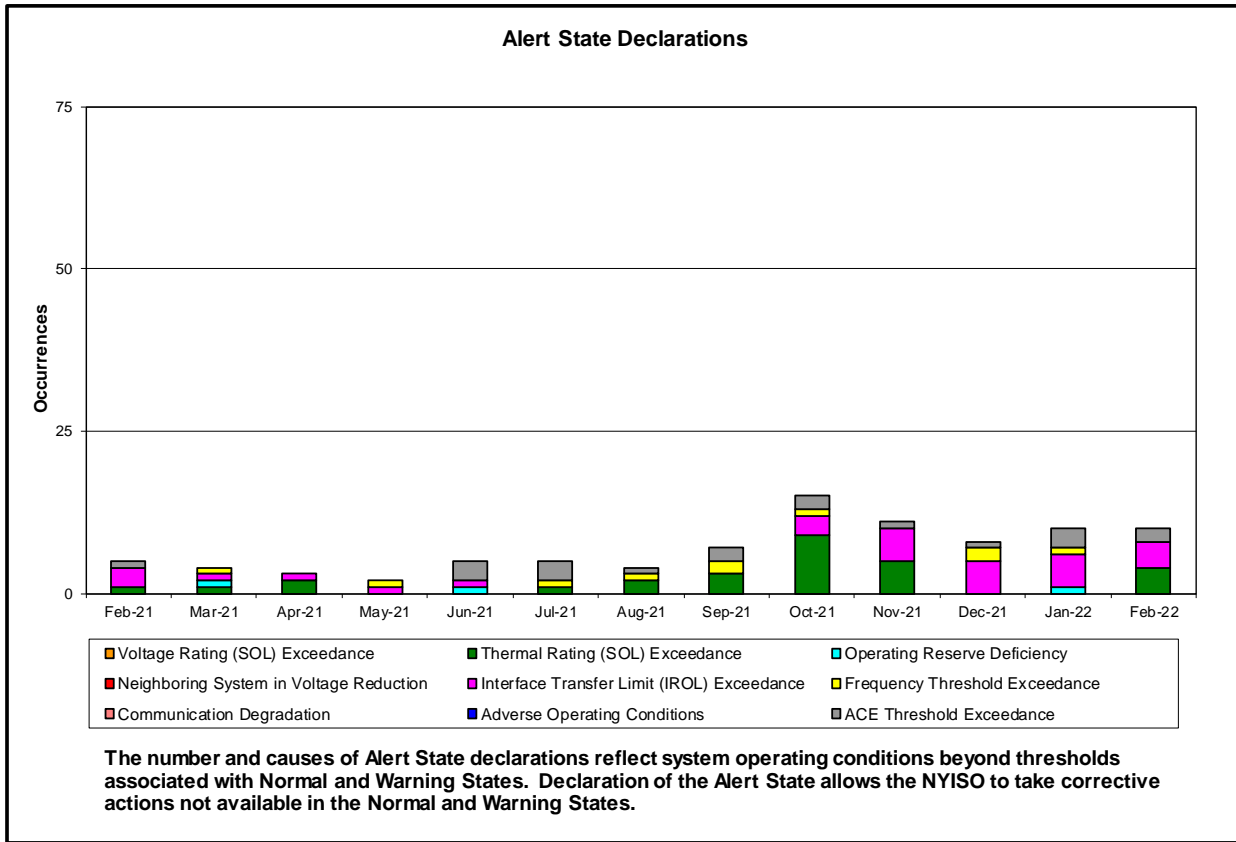
	Current Month Value (\$M)	Year-to-Date Value (\$M)
NY Savings from PJM-NY Congestion Coordination	\$2.16	\$18.38
NY Savings from PJM-NY Coordinated Transaction Scheduling	\$0.26	\$1.12
NY Savings from NE-NY Coordinated Transaction Scheduling	\$0.34	\$0.45
Total NY Savings	\$2.76	\$19.94
Regional Savings from PJM-NY Coordinated Transaction Scheduling	\$0.33	\$5.67
Regional Savings from NE-NY Coordinated Transaction Scheduling	\$0.08	\$0.43
Total Regional Savings	\$0.42	\$6.10

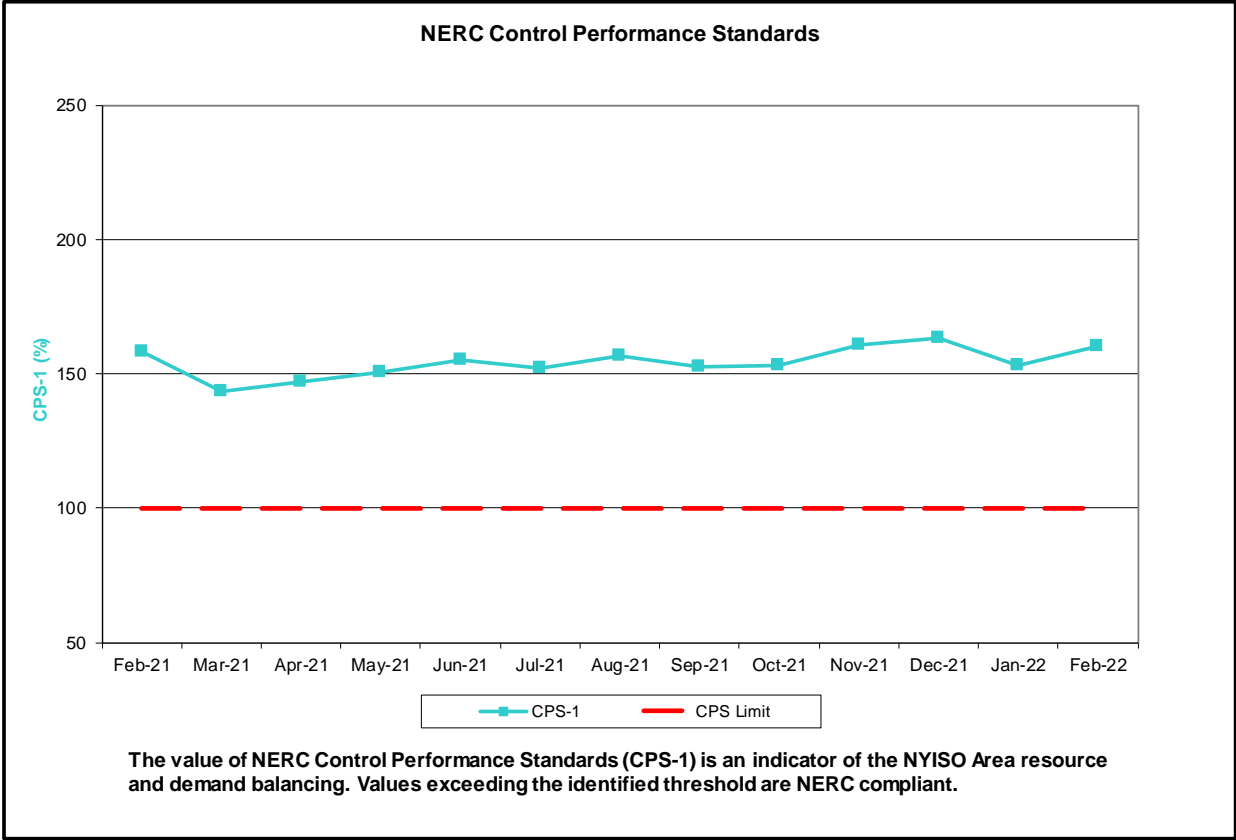
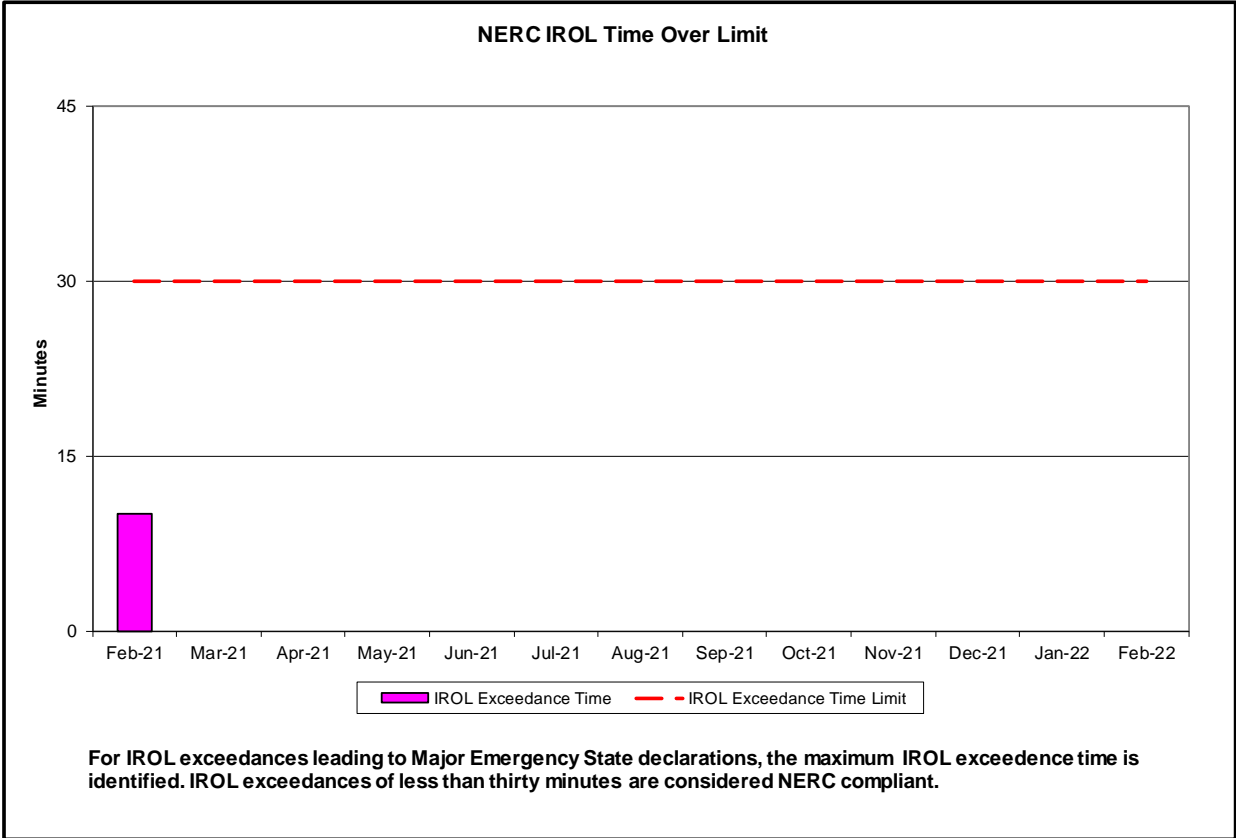
- Statewide uplift cost monthly average was (\$1.77)/MWh.
- The following table identifies the Monthly ICAP spot market prices and the price delta.

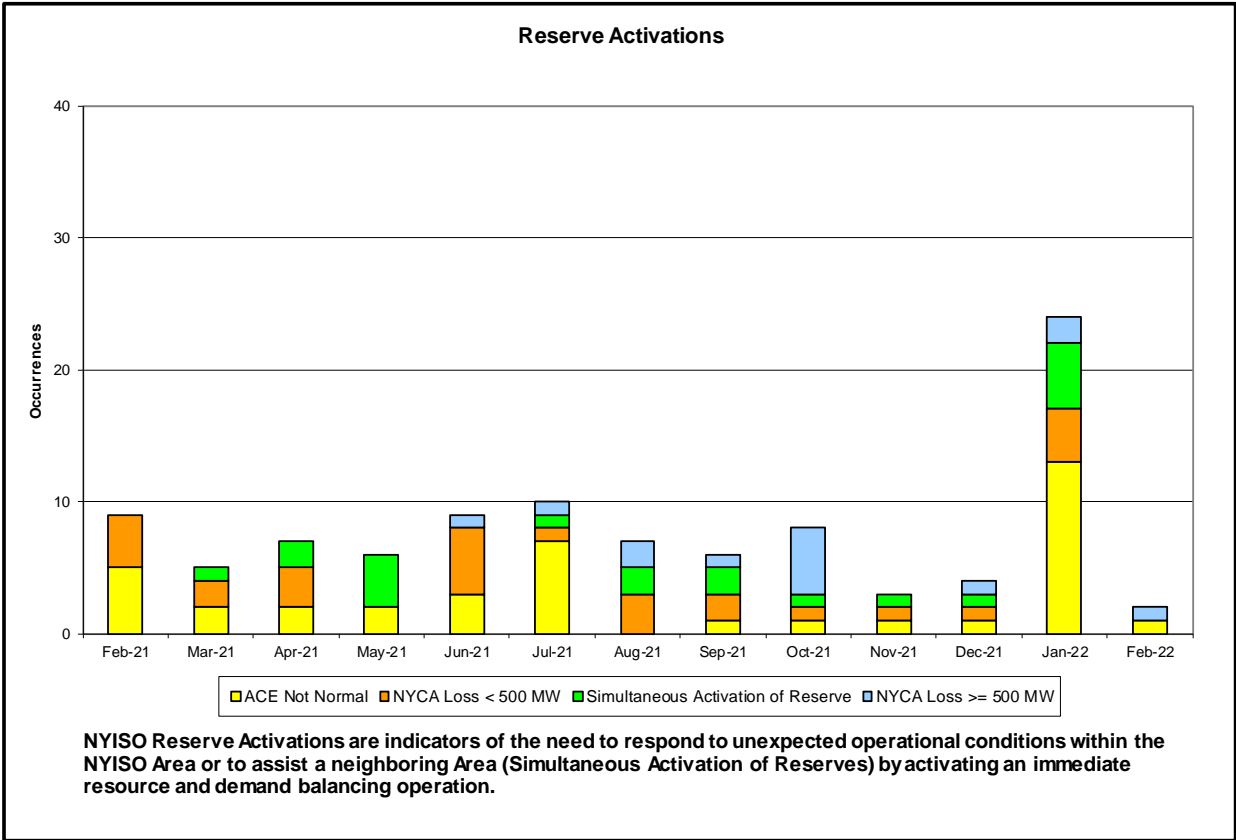
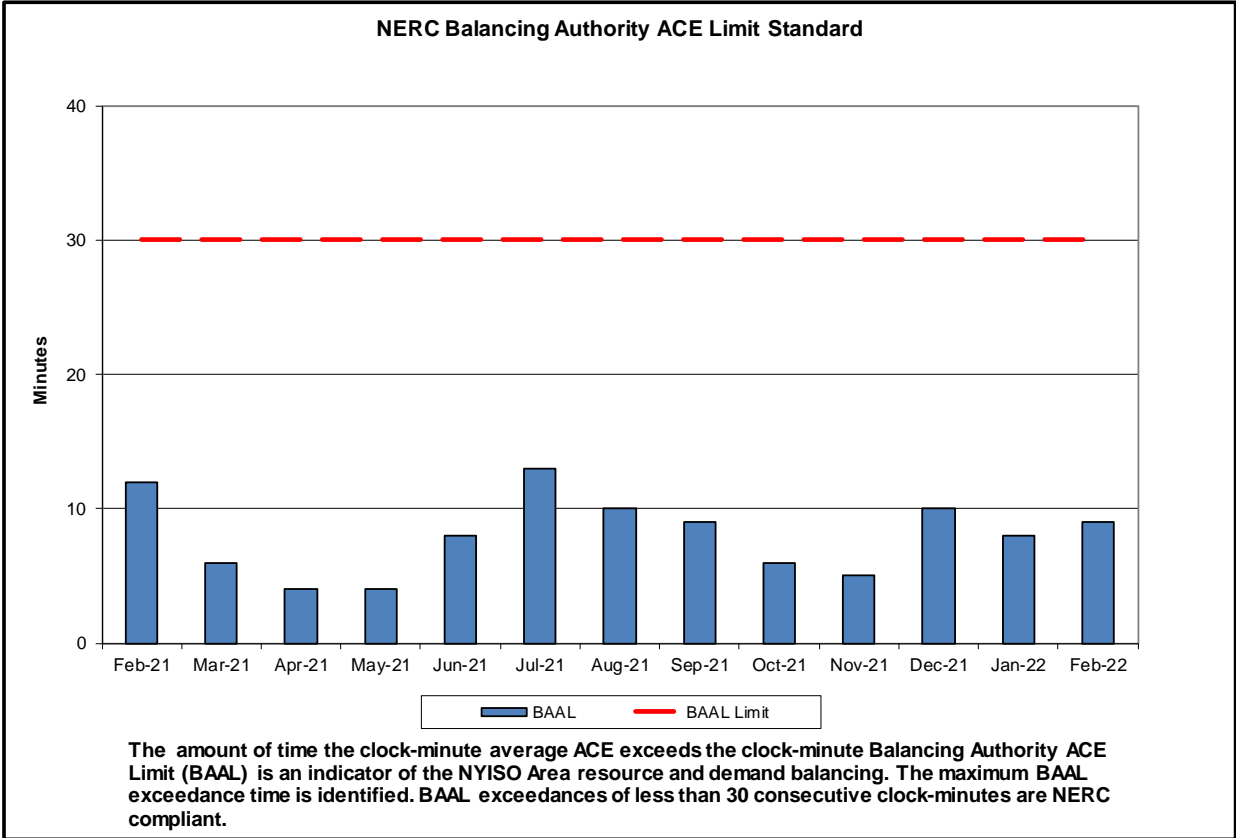
Spot Auction Price Results	NYCA	Lower Hudson Valley Zones	New York City Zone	Long Island Zone
March 2022 Spot Price	\$0.89	\$0.89	\$0.89	\$1.80
February 2022 Spot Price	\$2.95	\$2.95	\$2.95	\$2.95
Delta	(\$2.06)	(\$2.06)	(\$2.06)	(\$1.15)

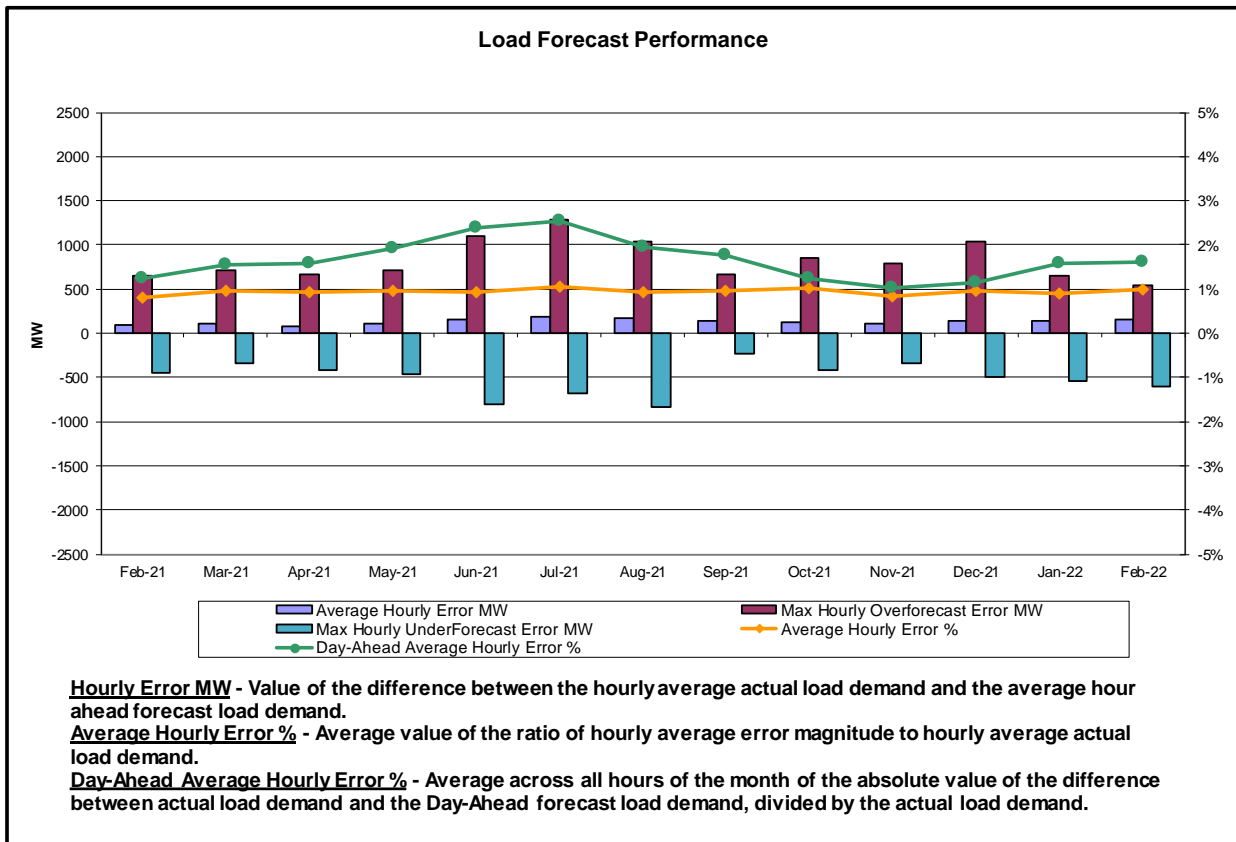
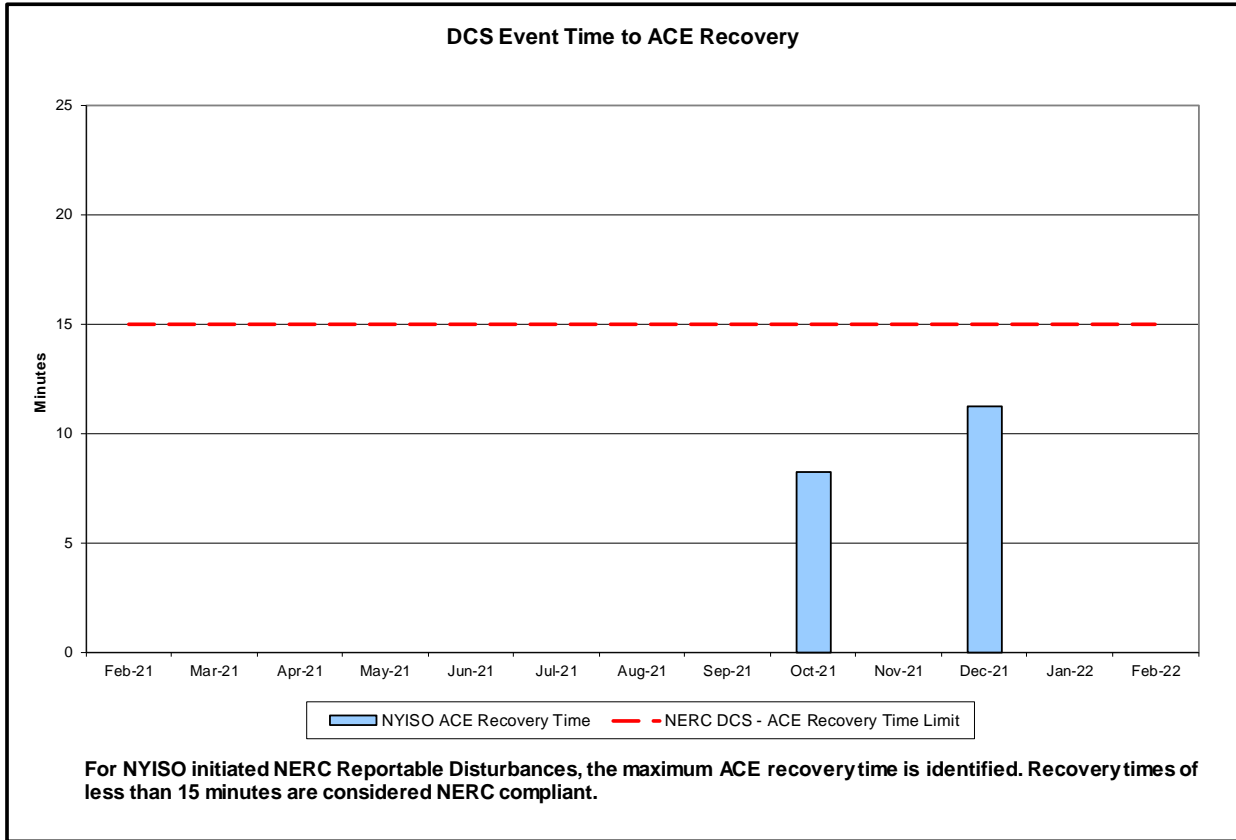
- All localities (except LI) experienced \$2.06 clearing price decline due to an increase net Imports. The clearing price for Lower Hudson Valley and New York City were set by NYCA.

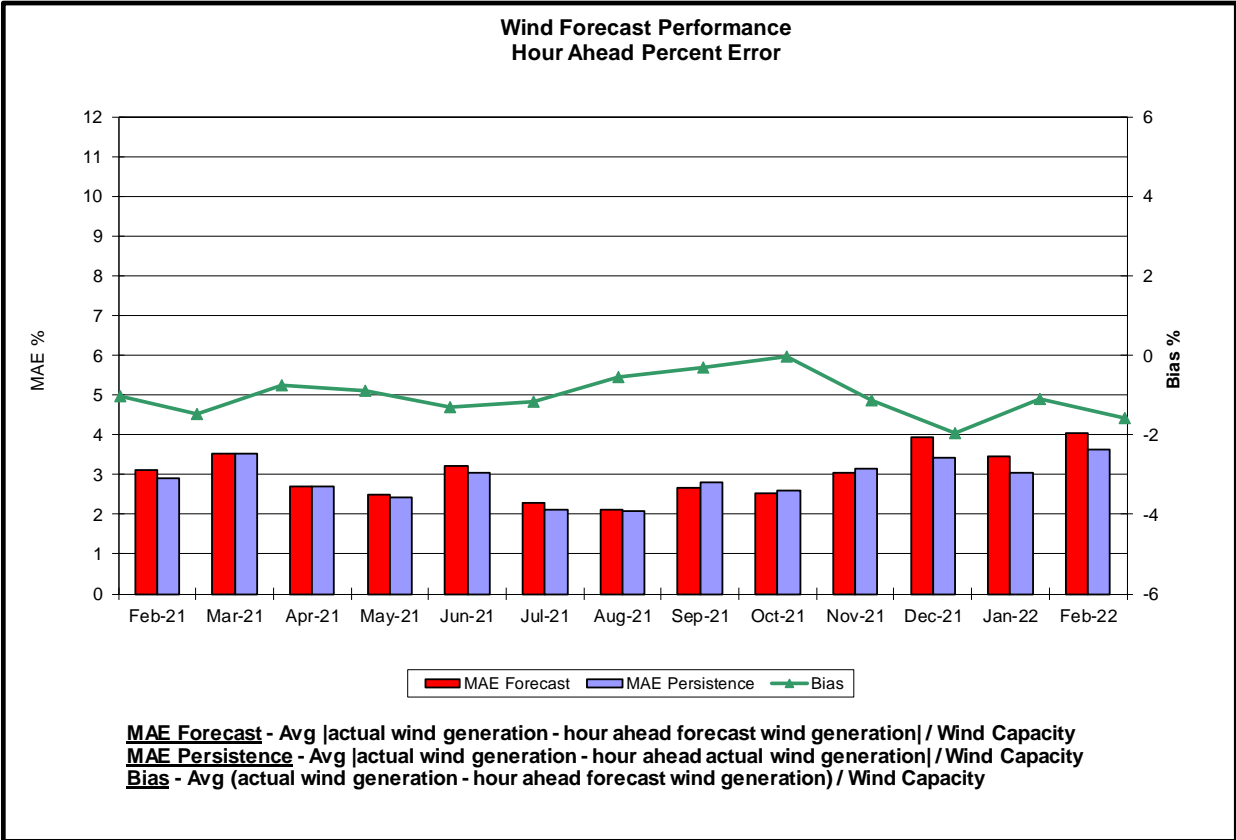
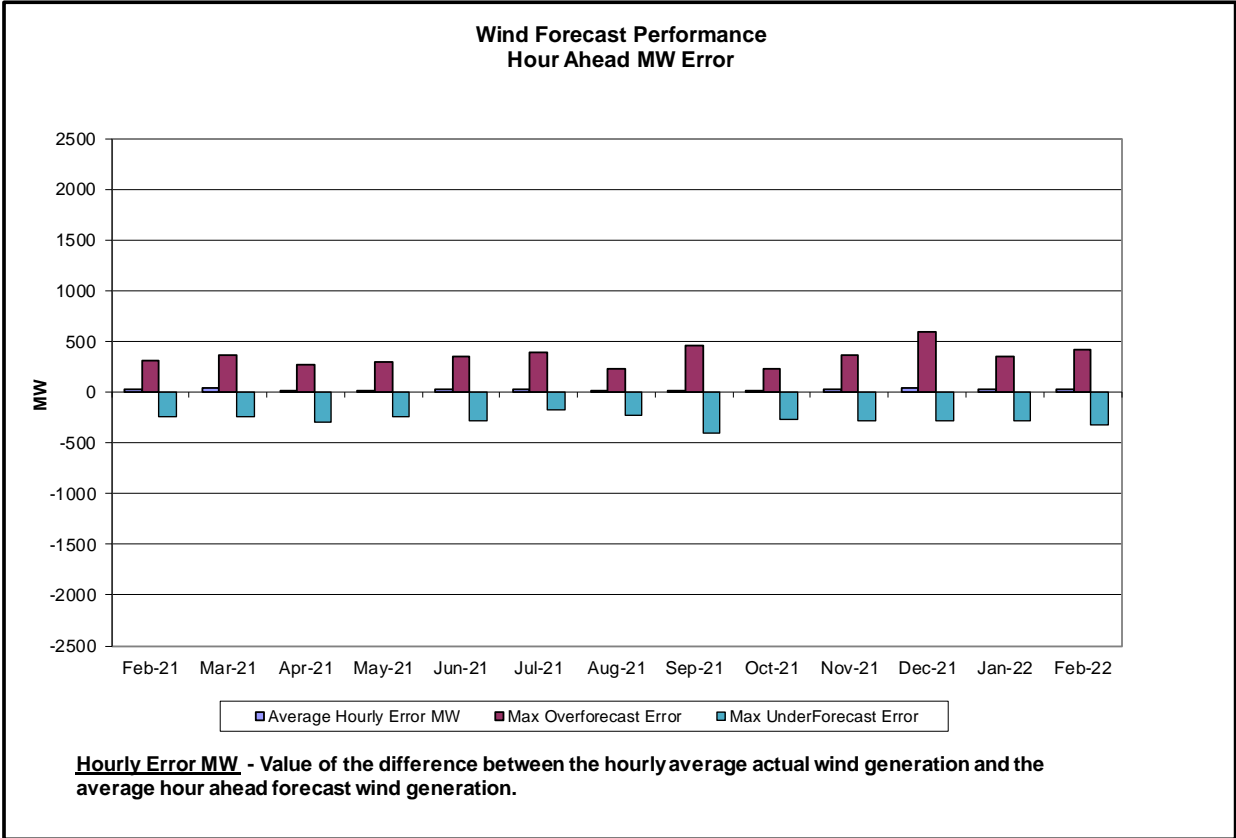
Reliability Performance Metrics

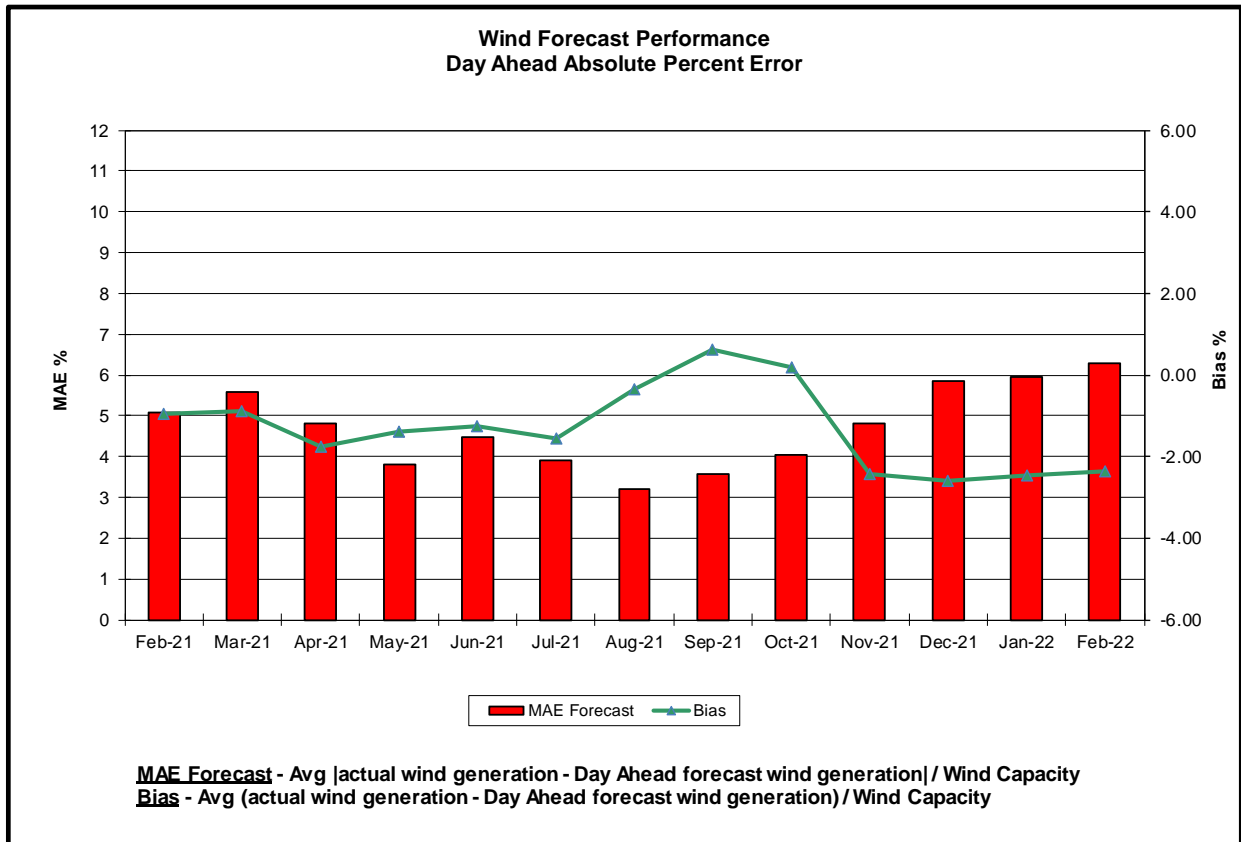
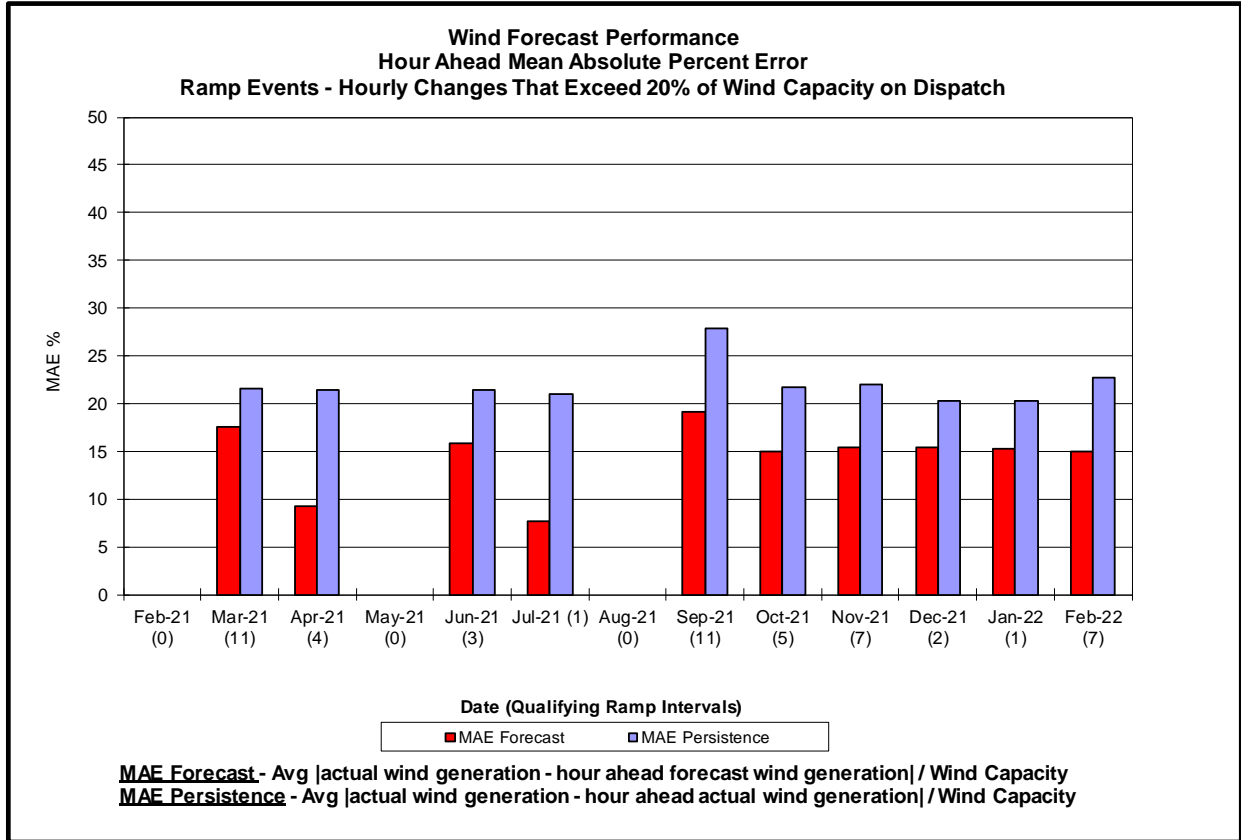


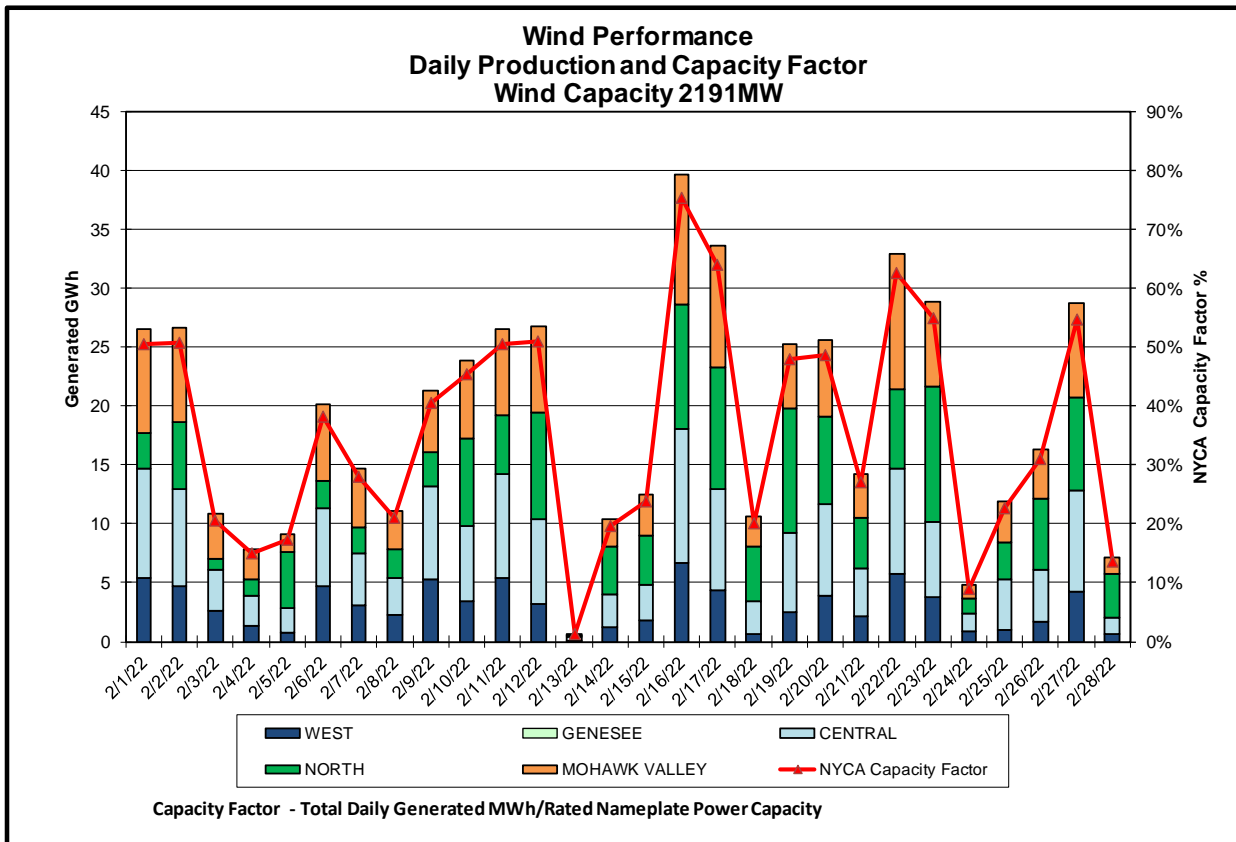
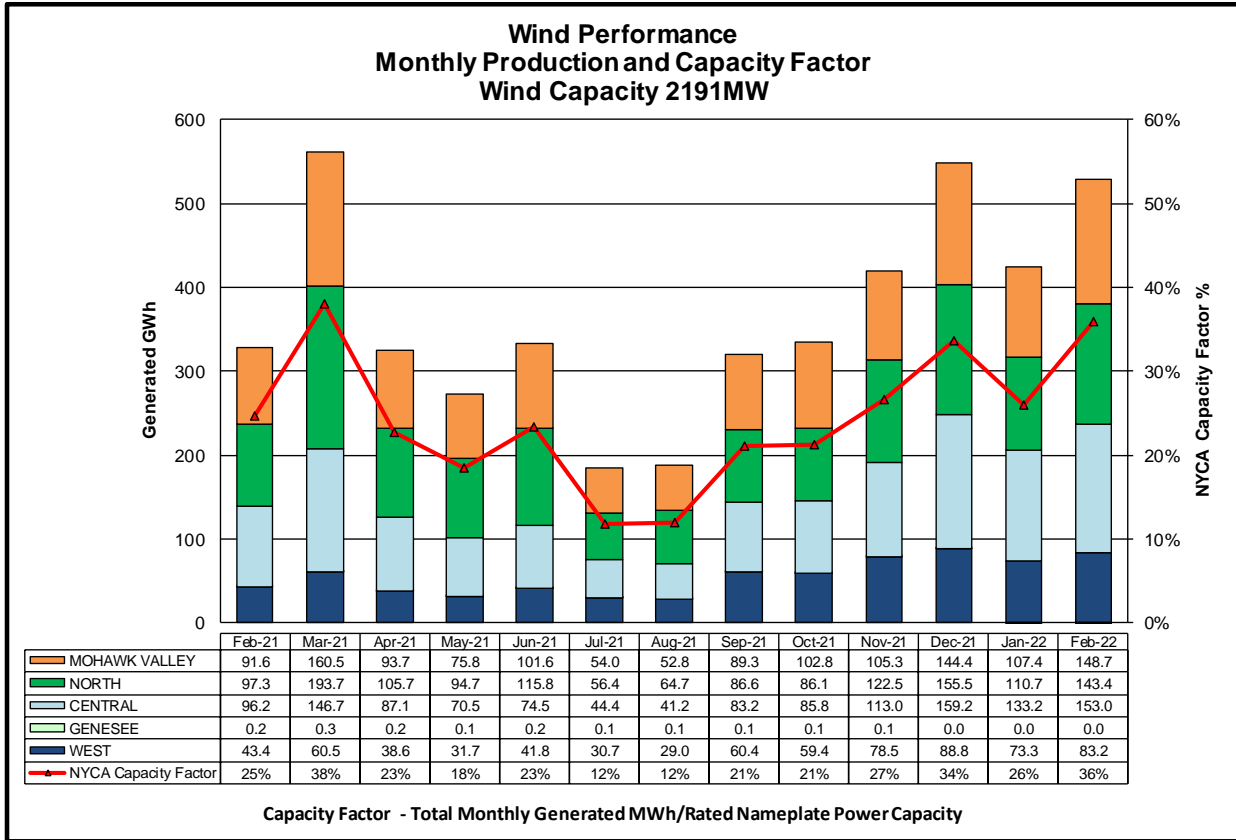


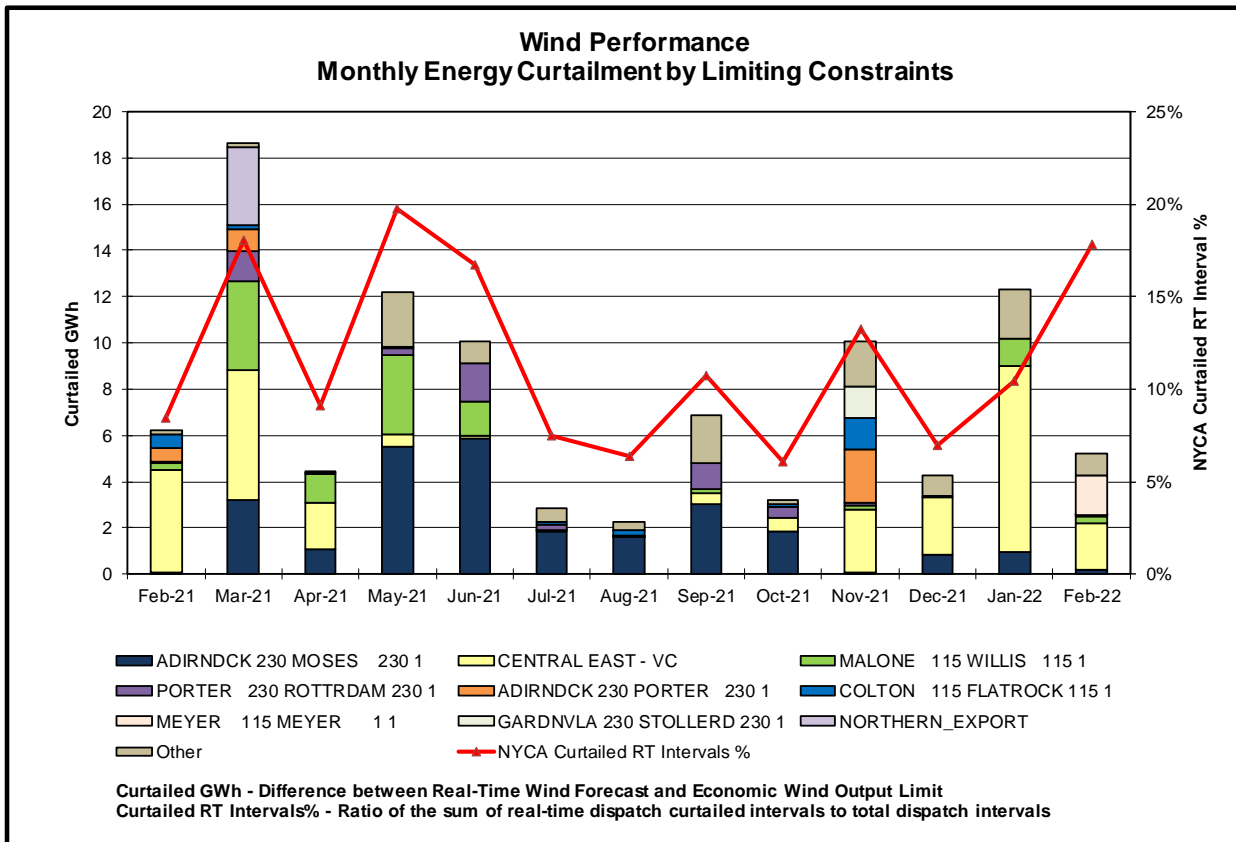
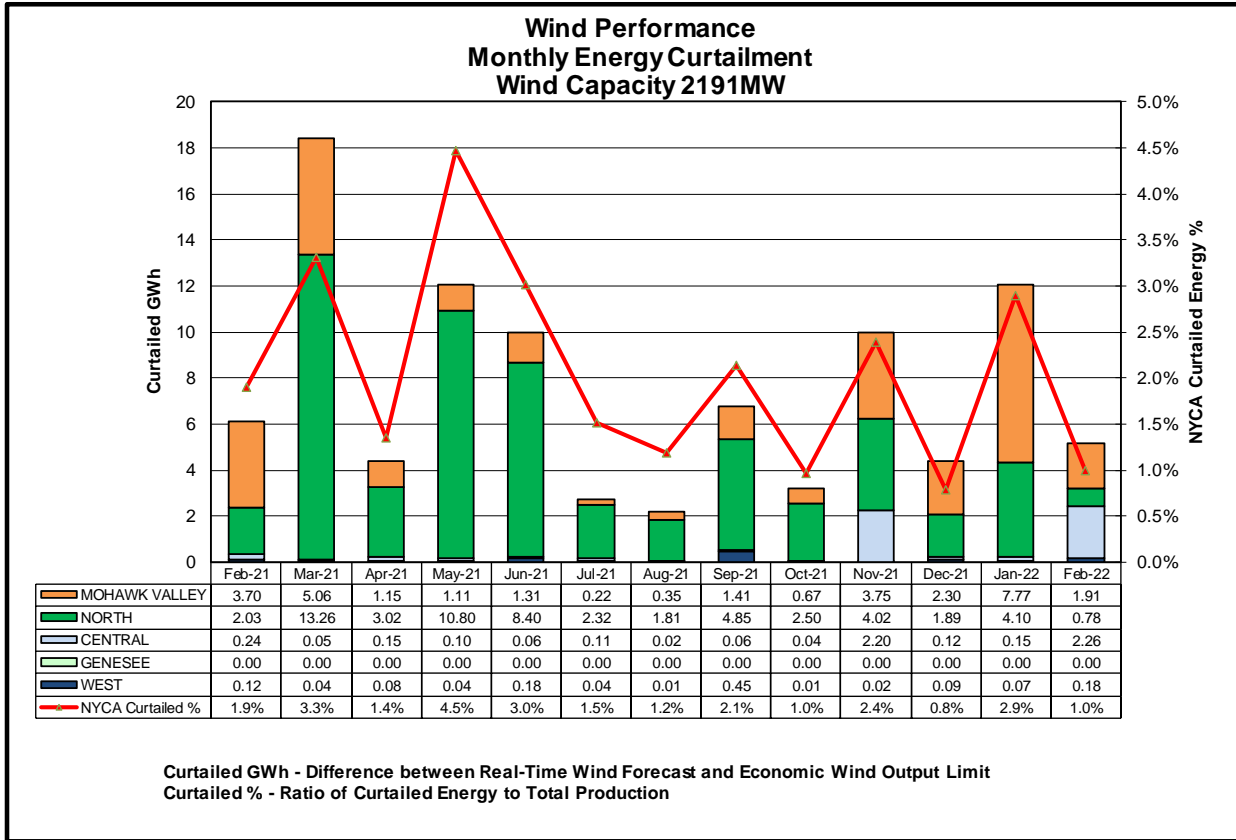


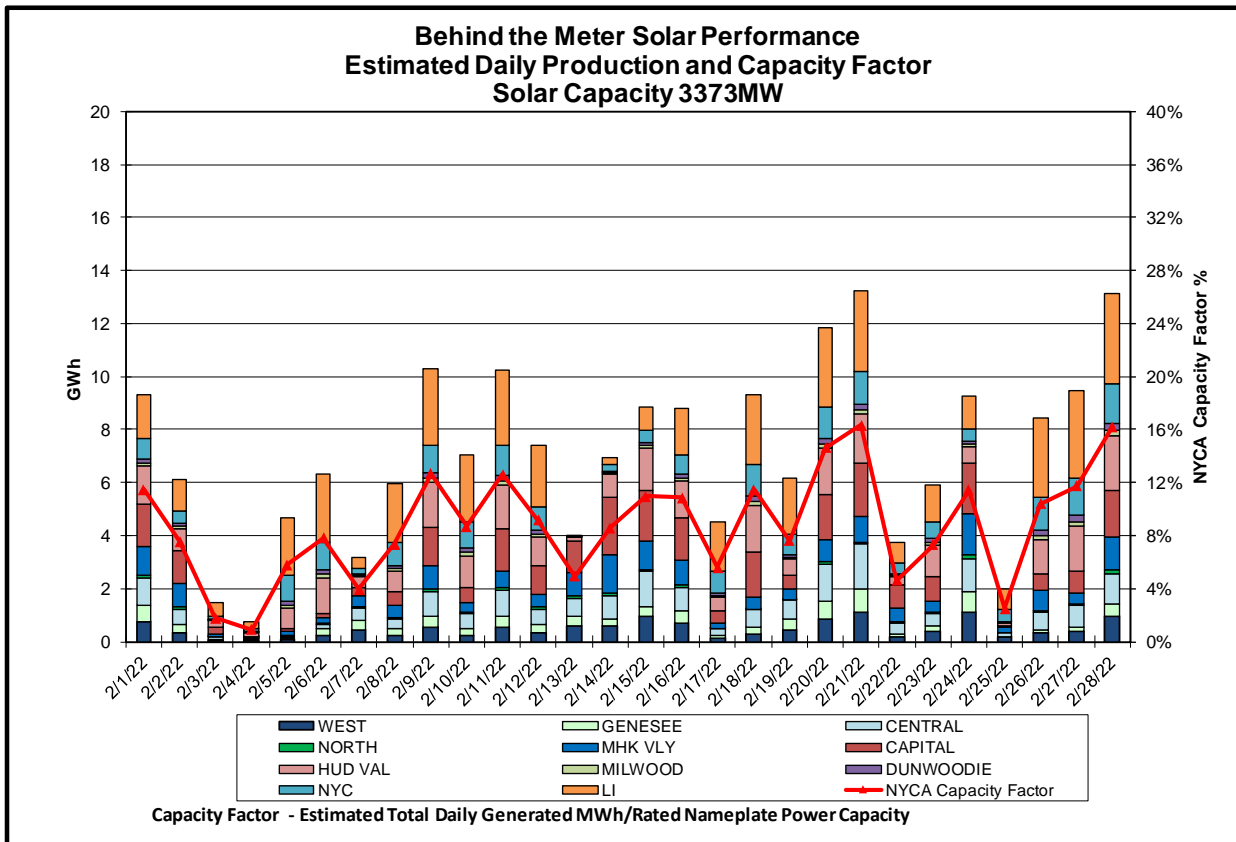
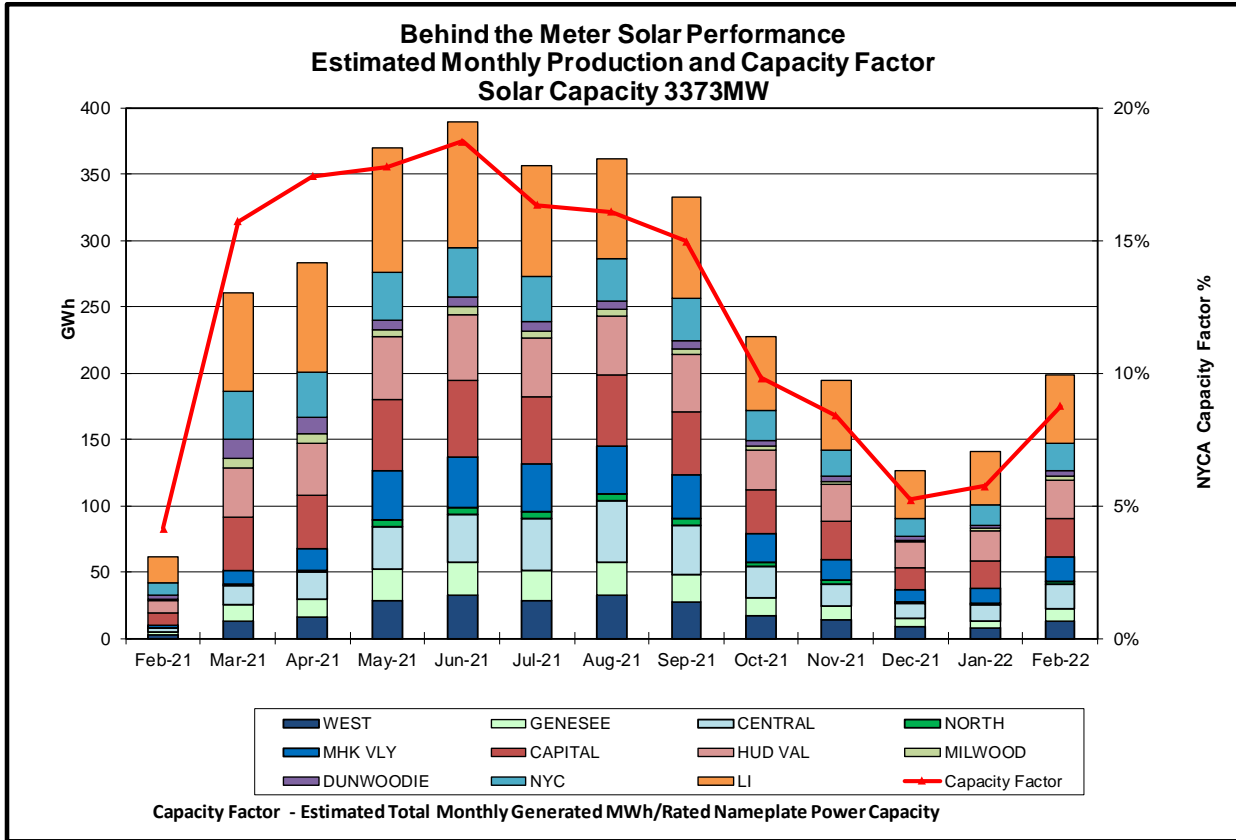


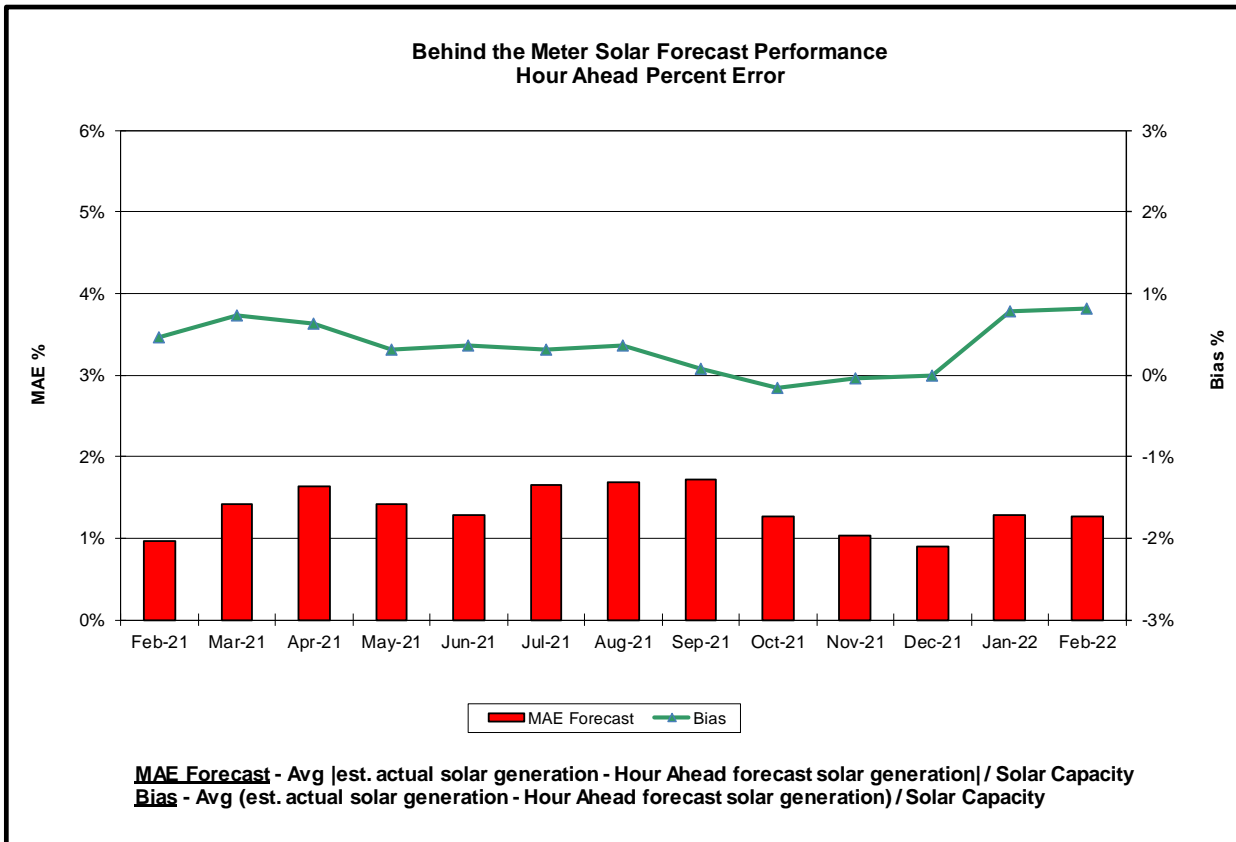
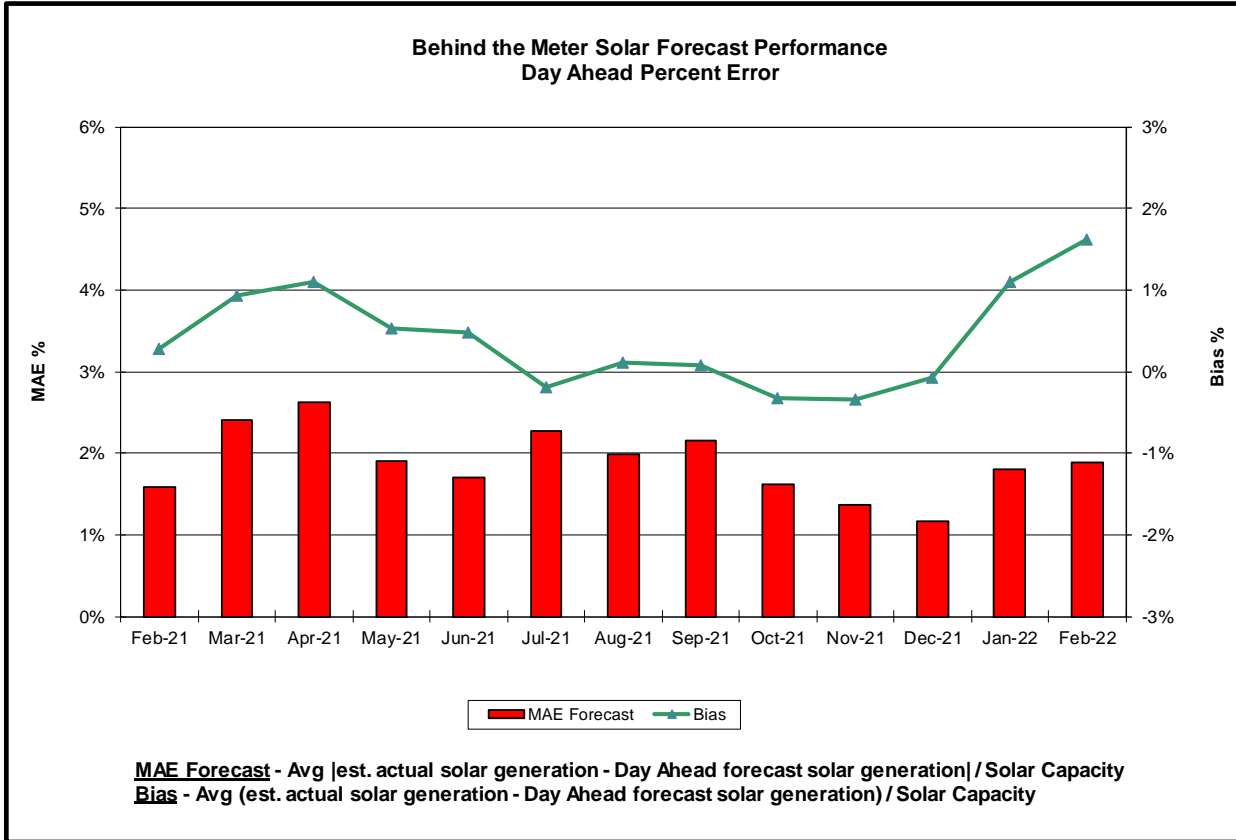


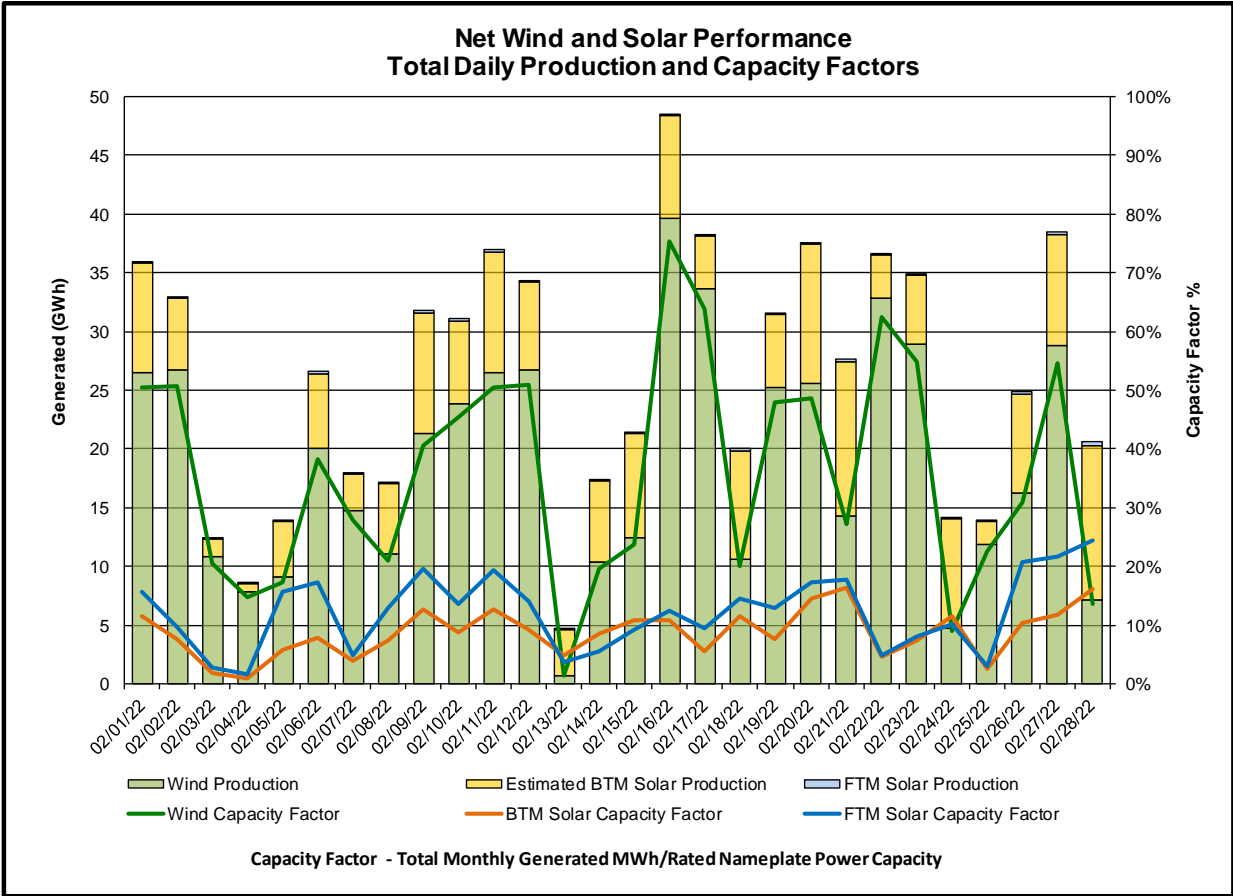
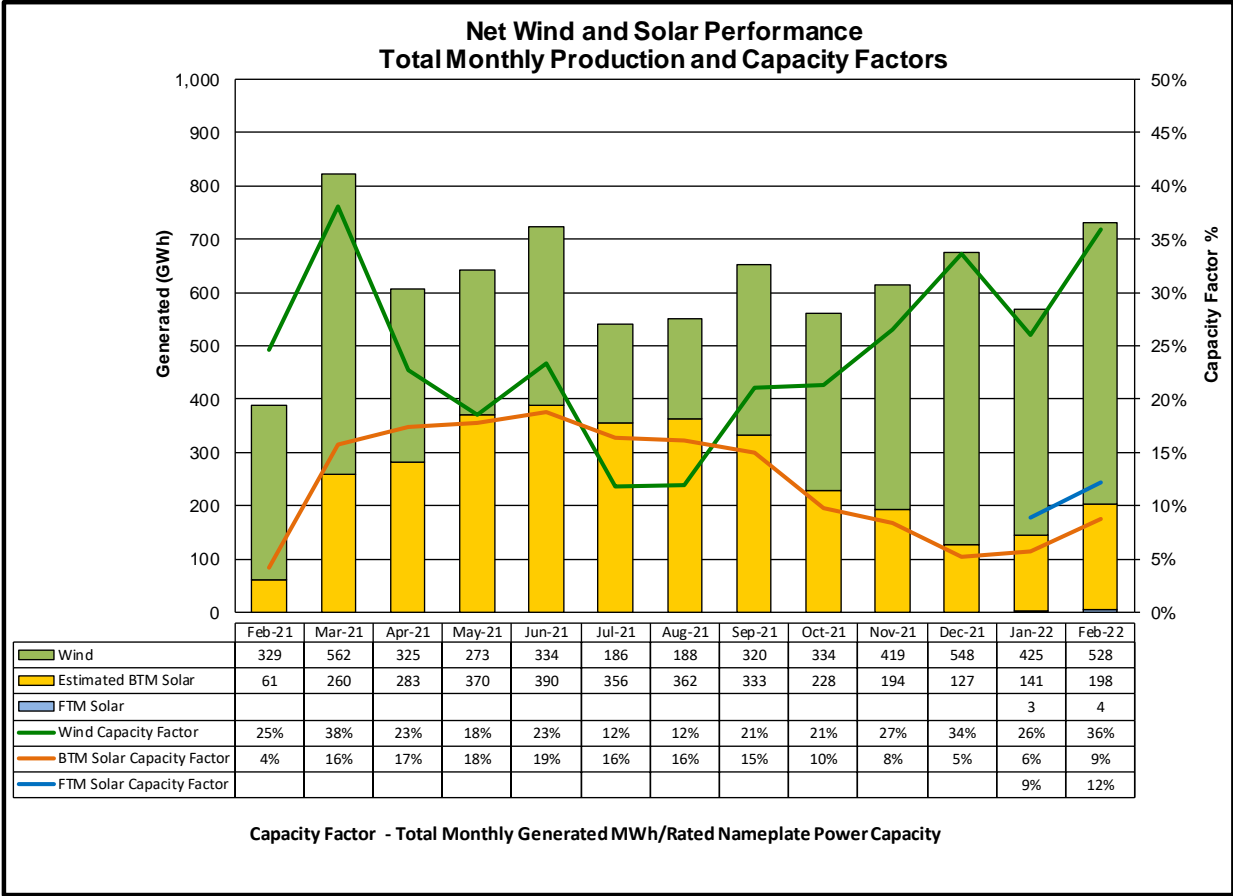


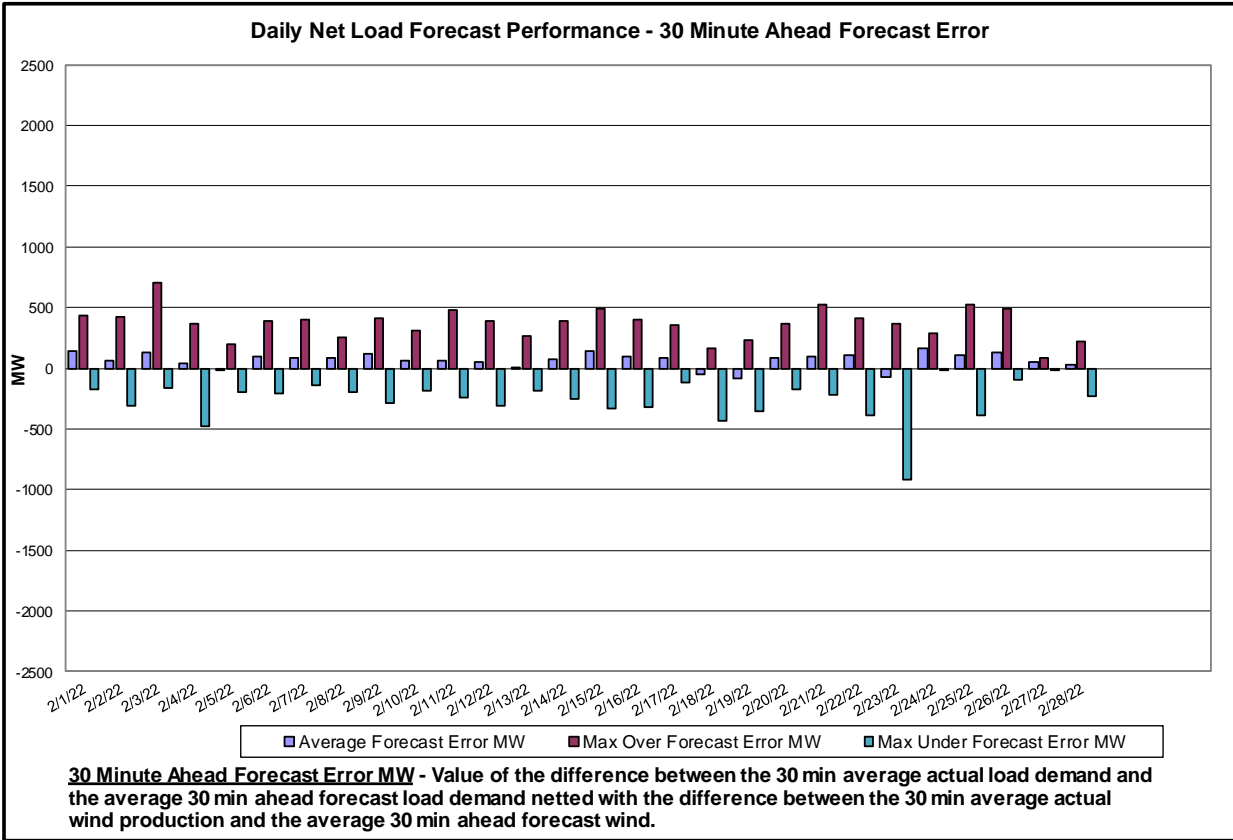
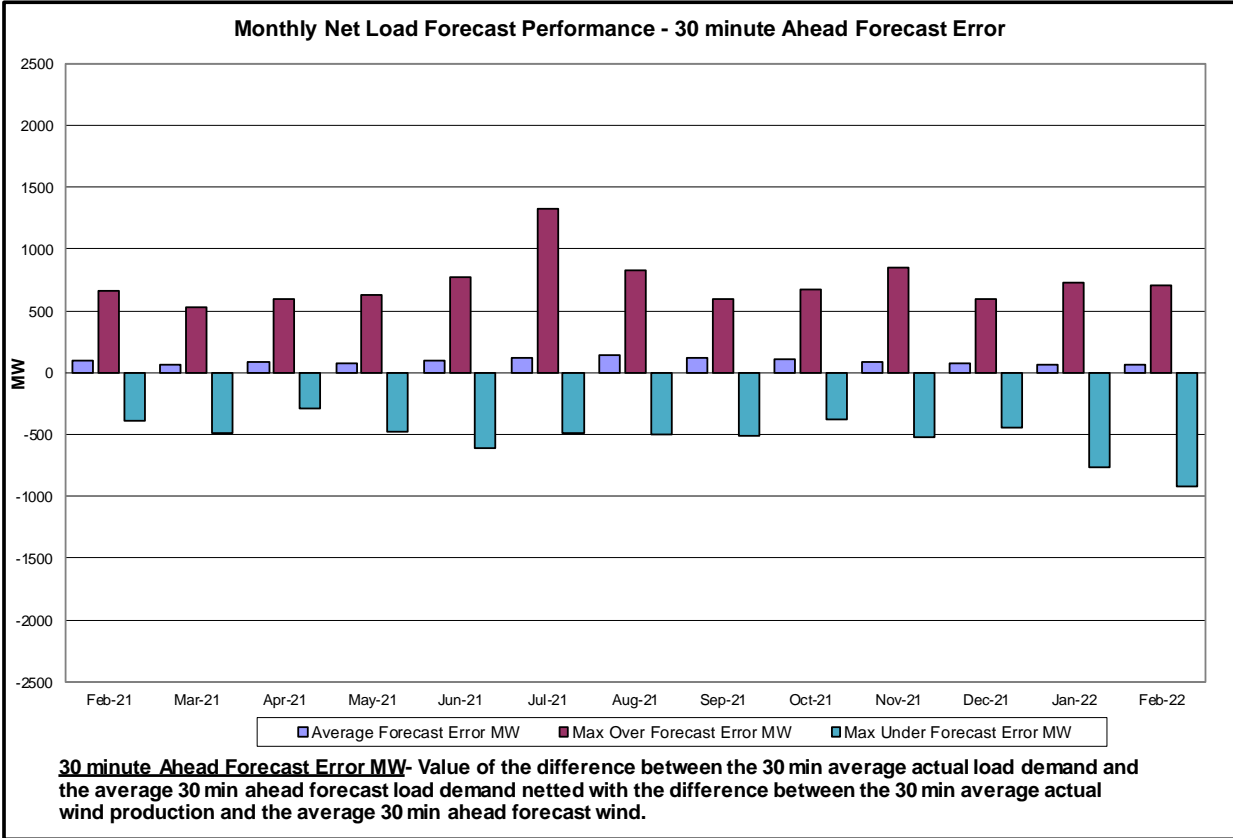


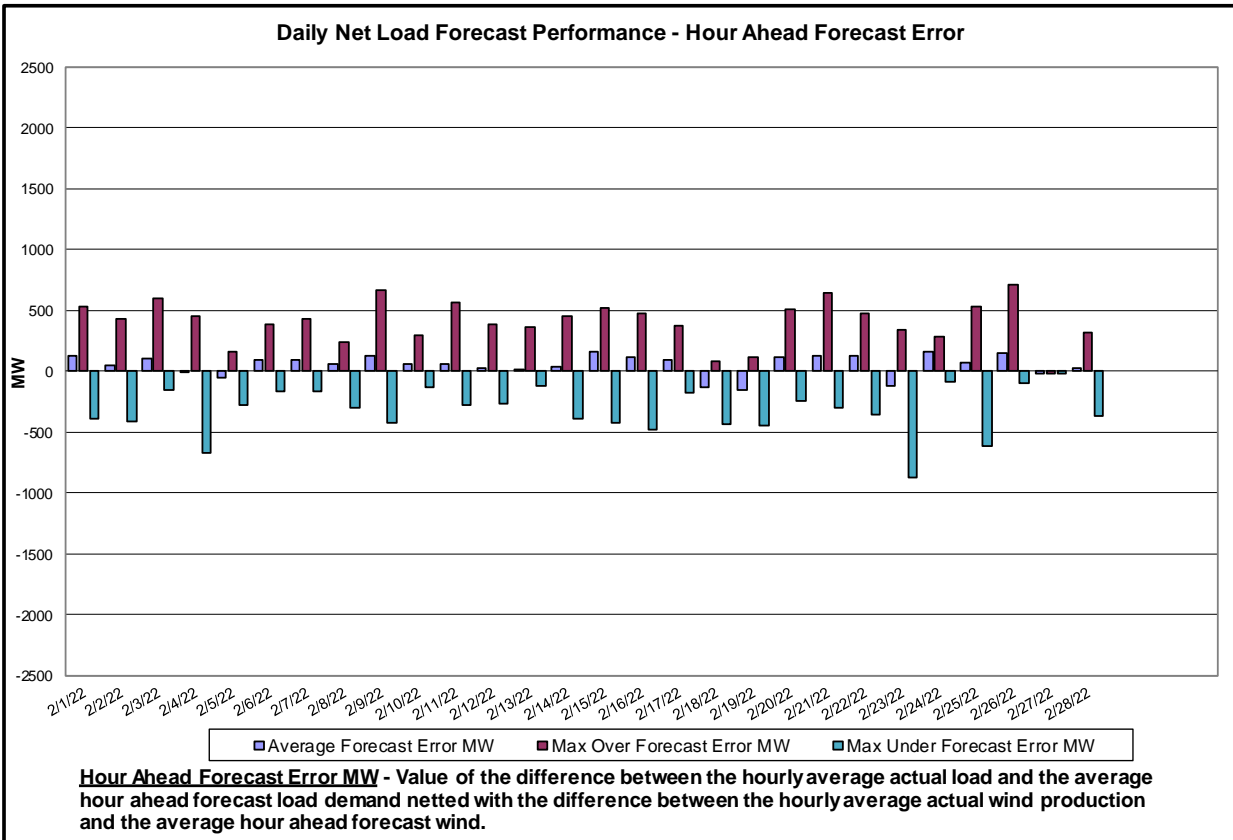
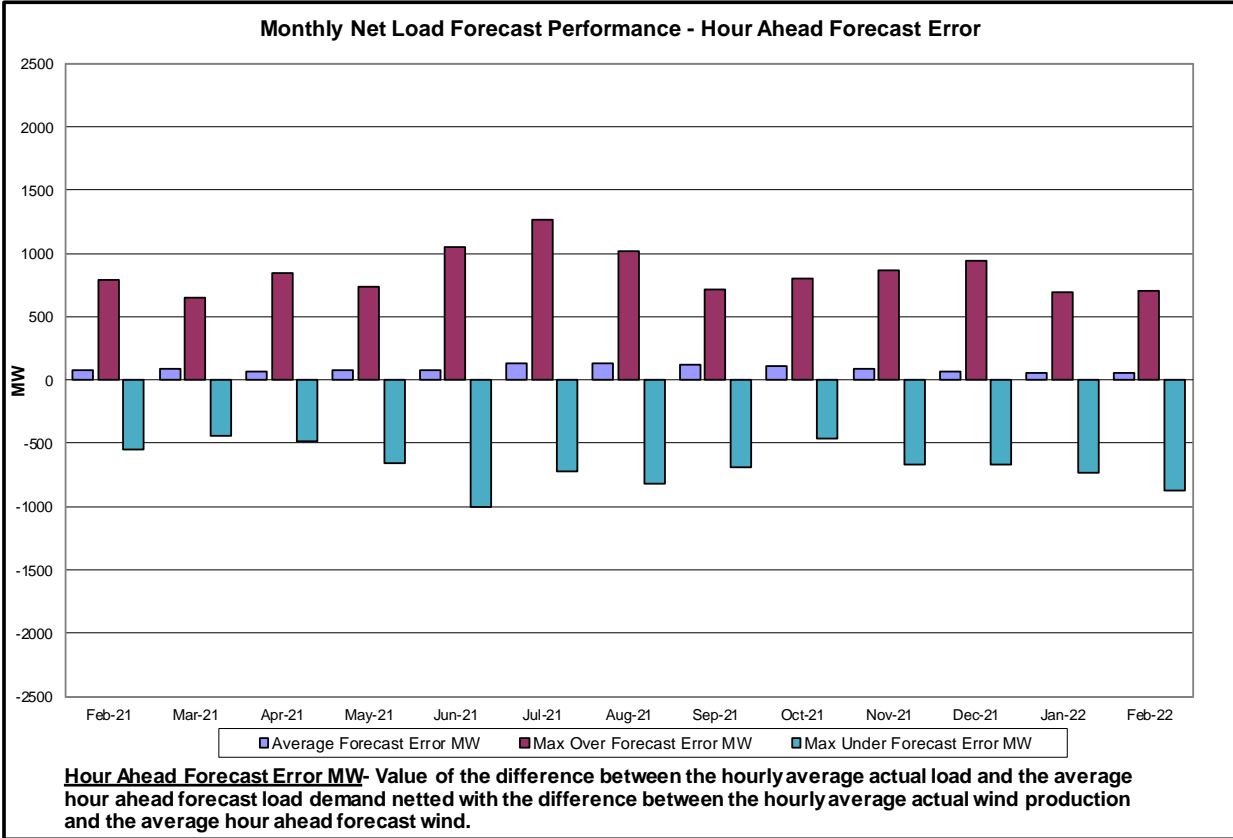


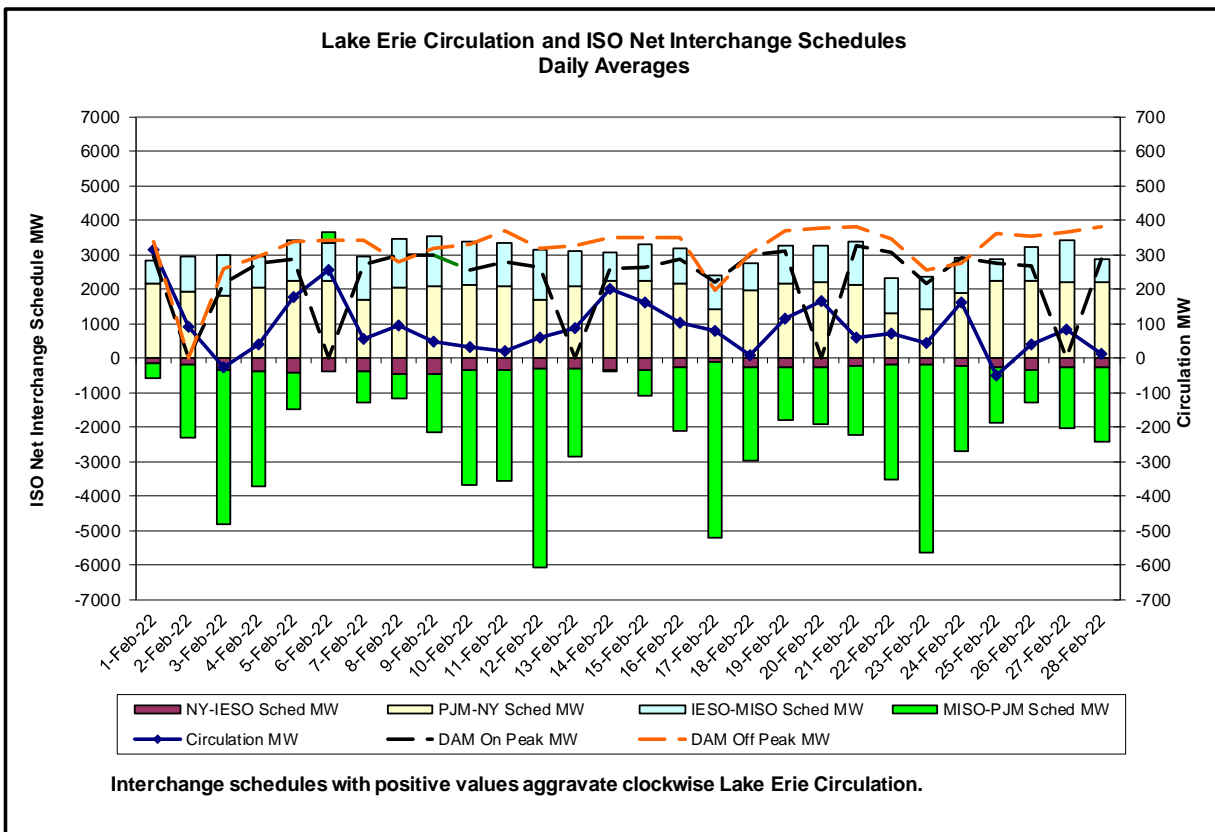
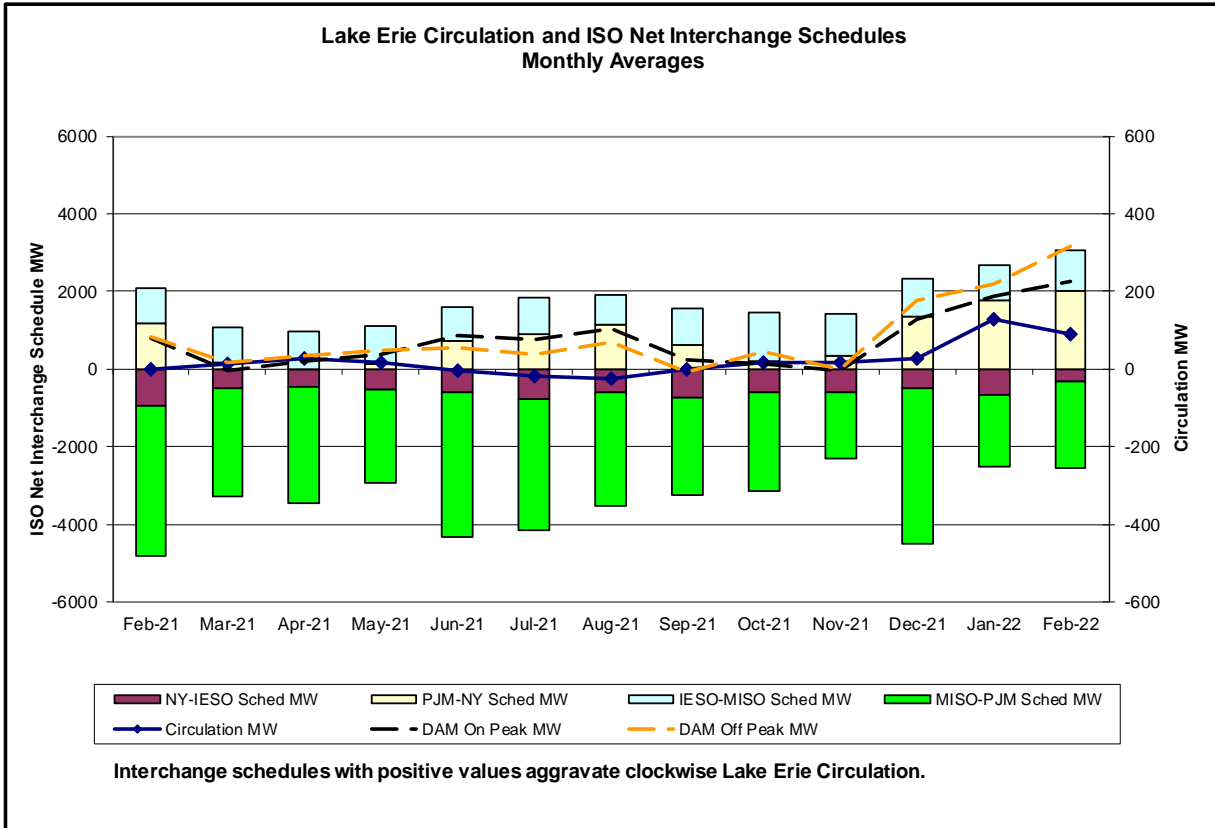




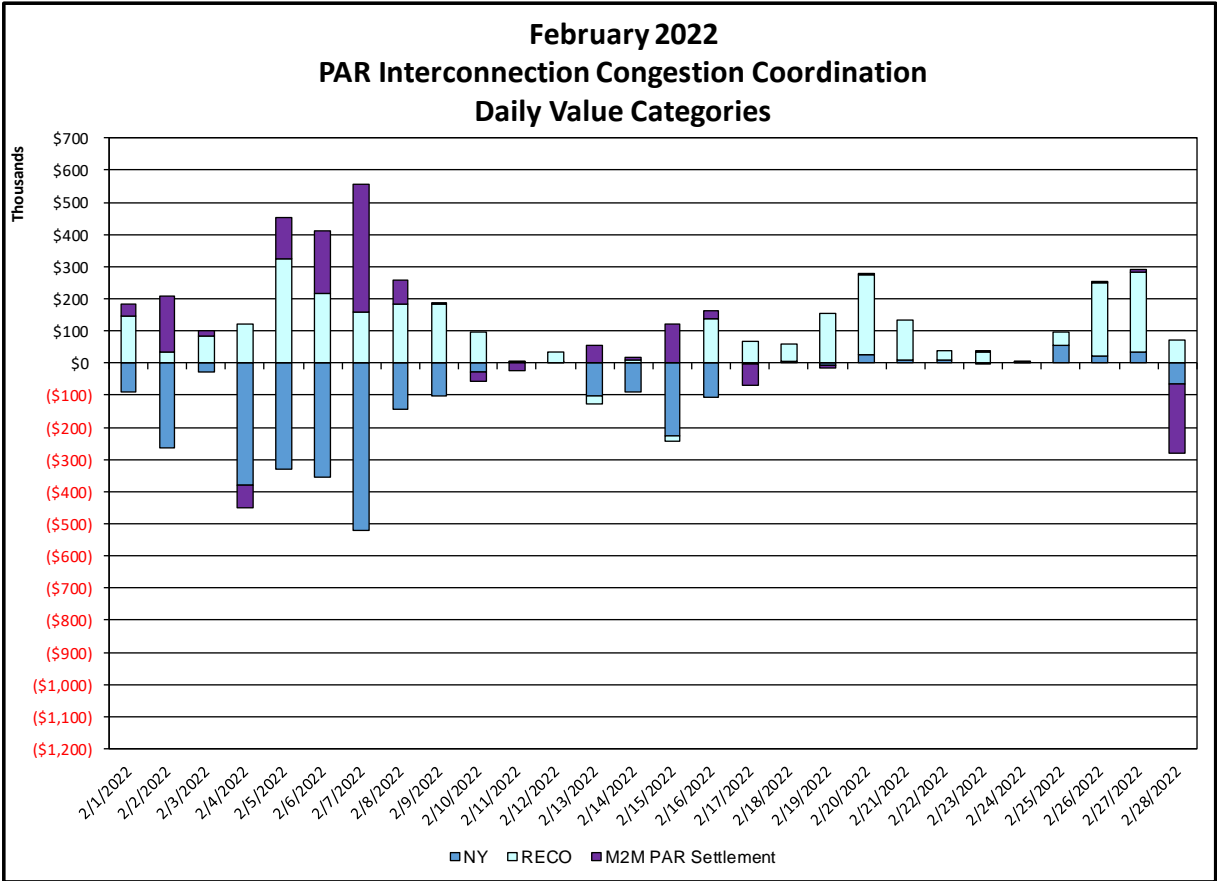
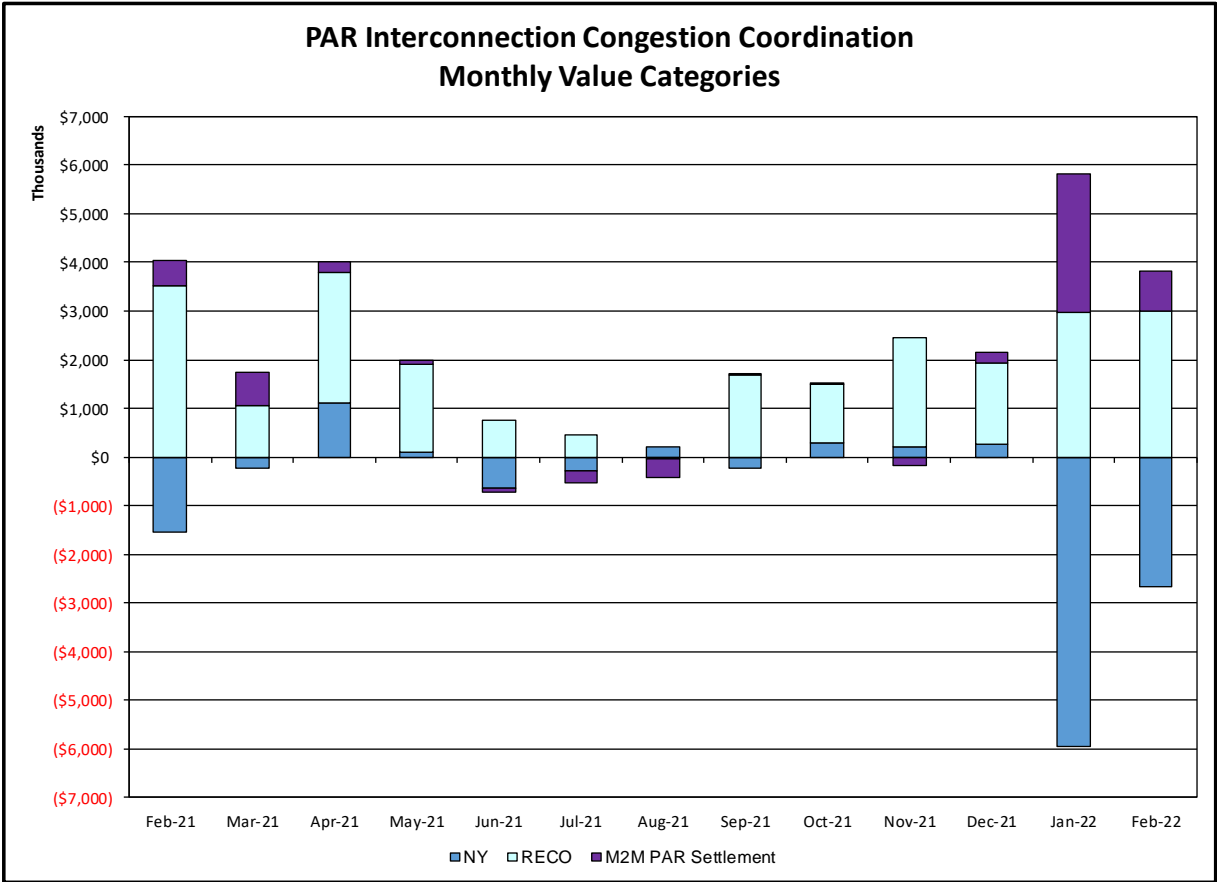






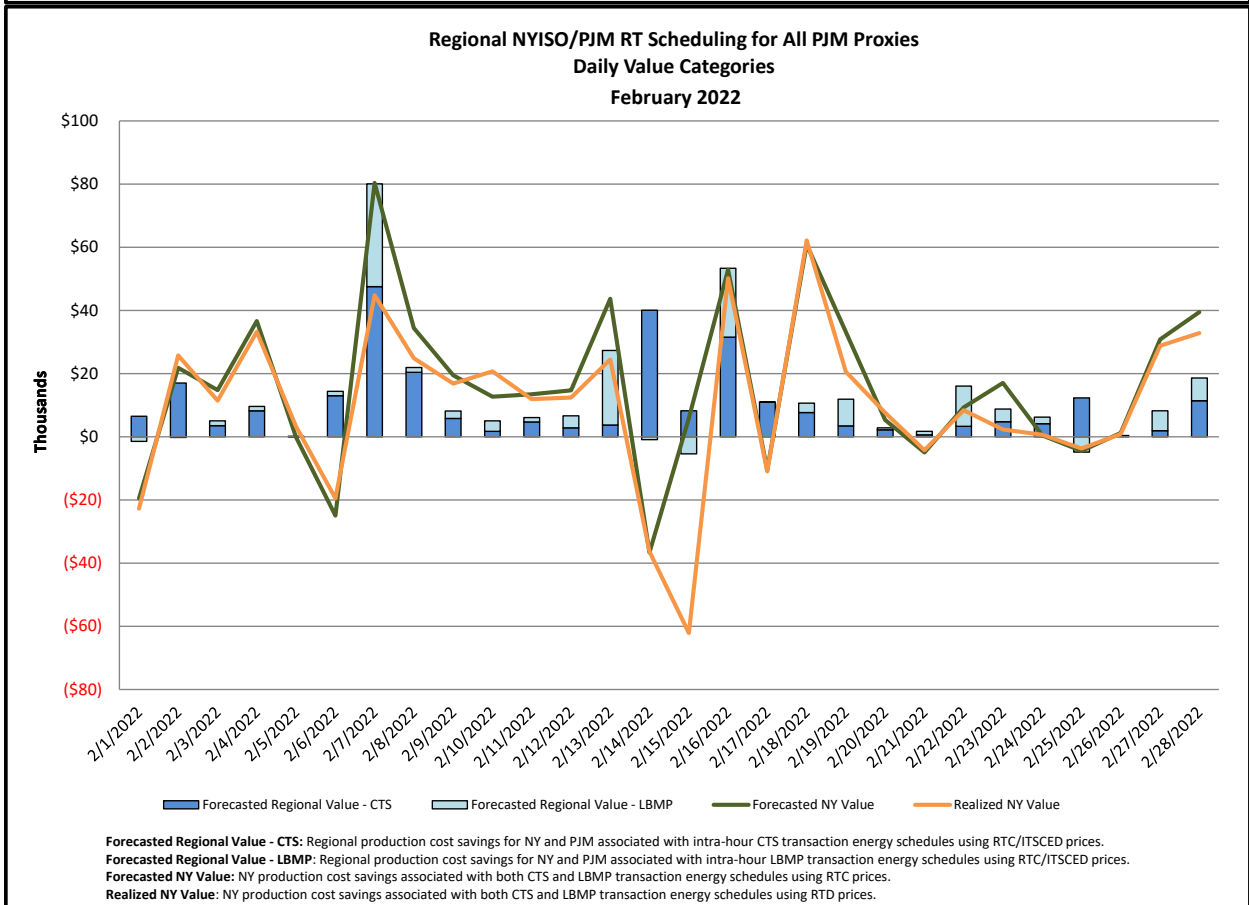
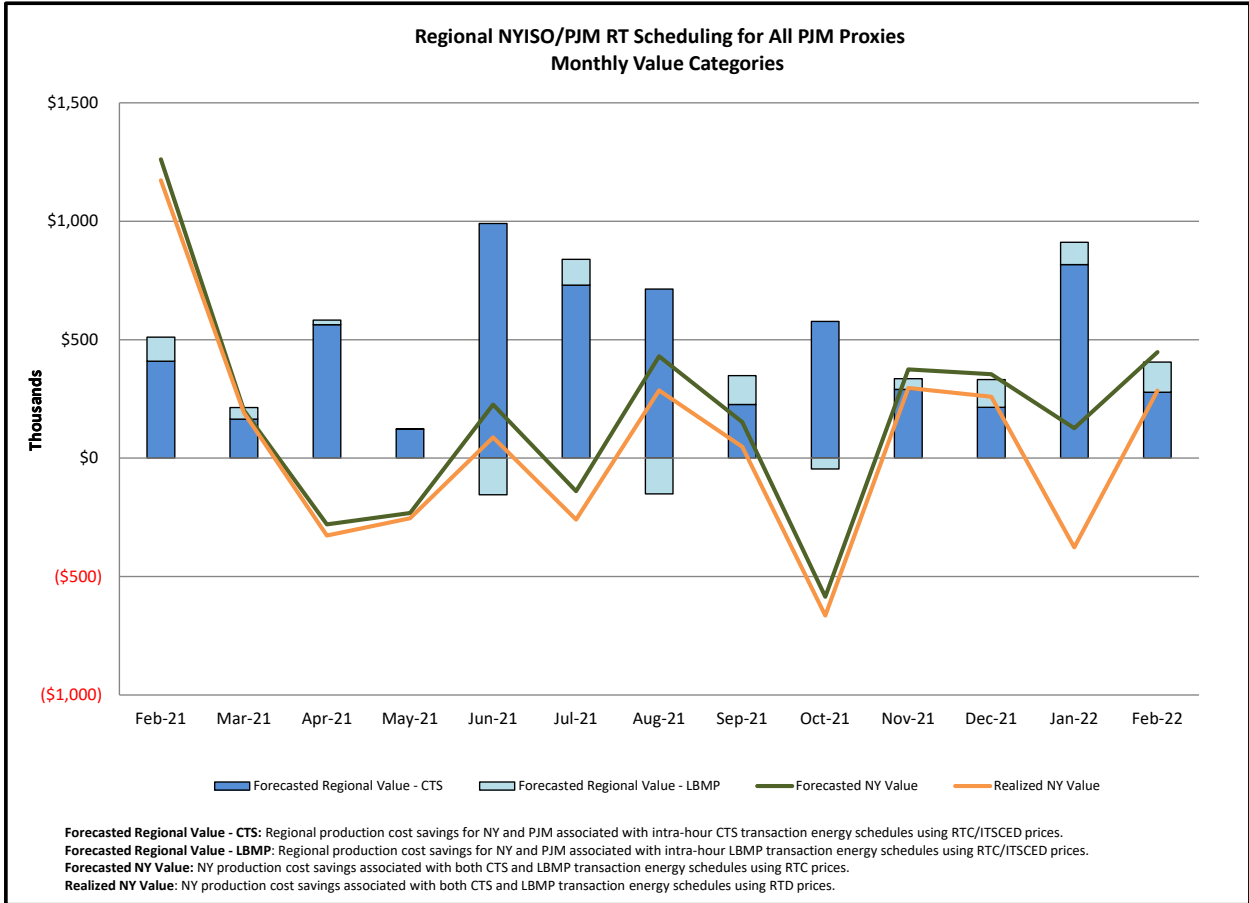


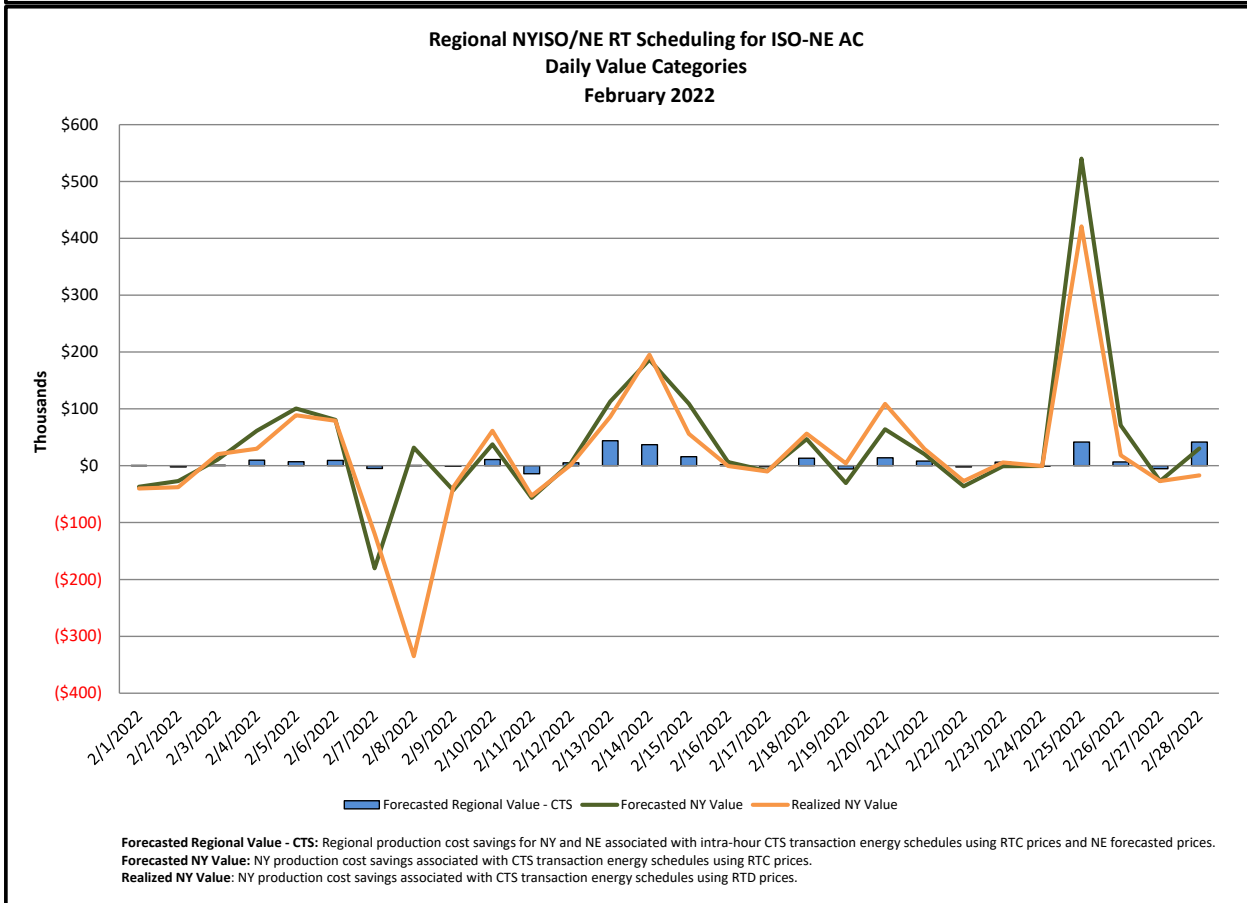
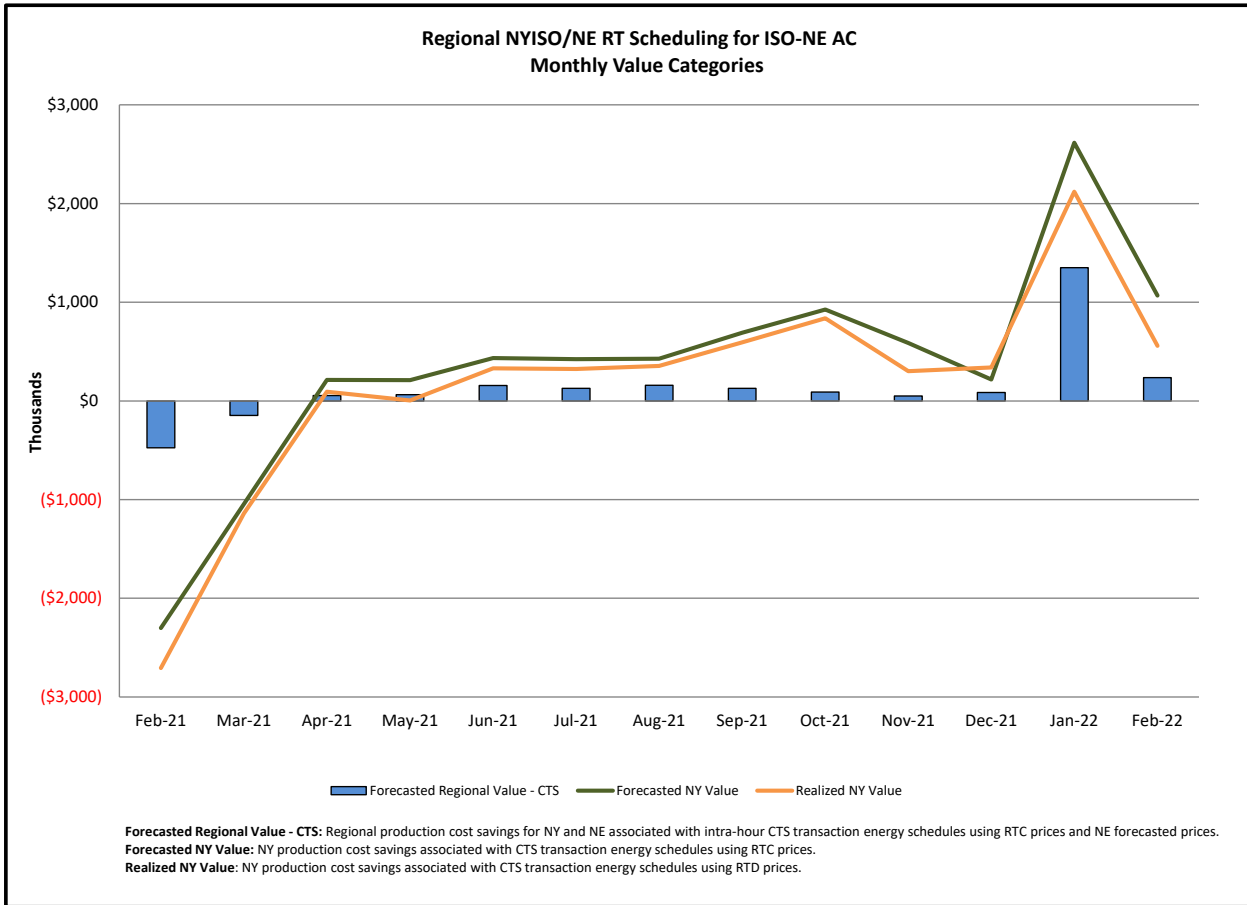
Broader Regional Market Performance Metrics



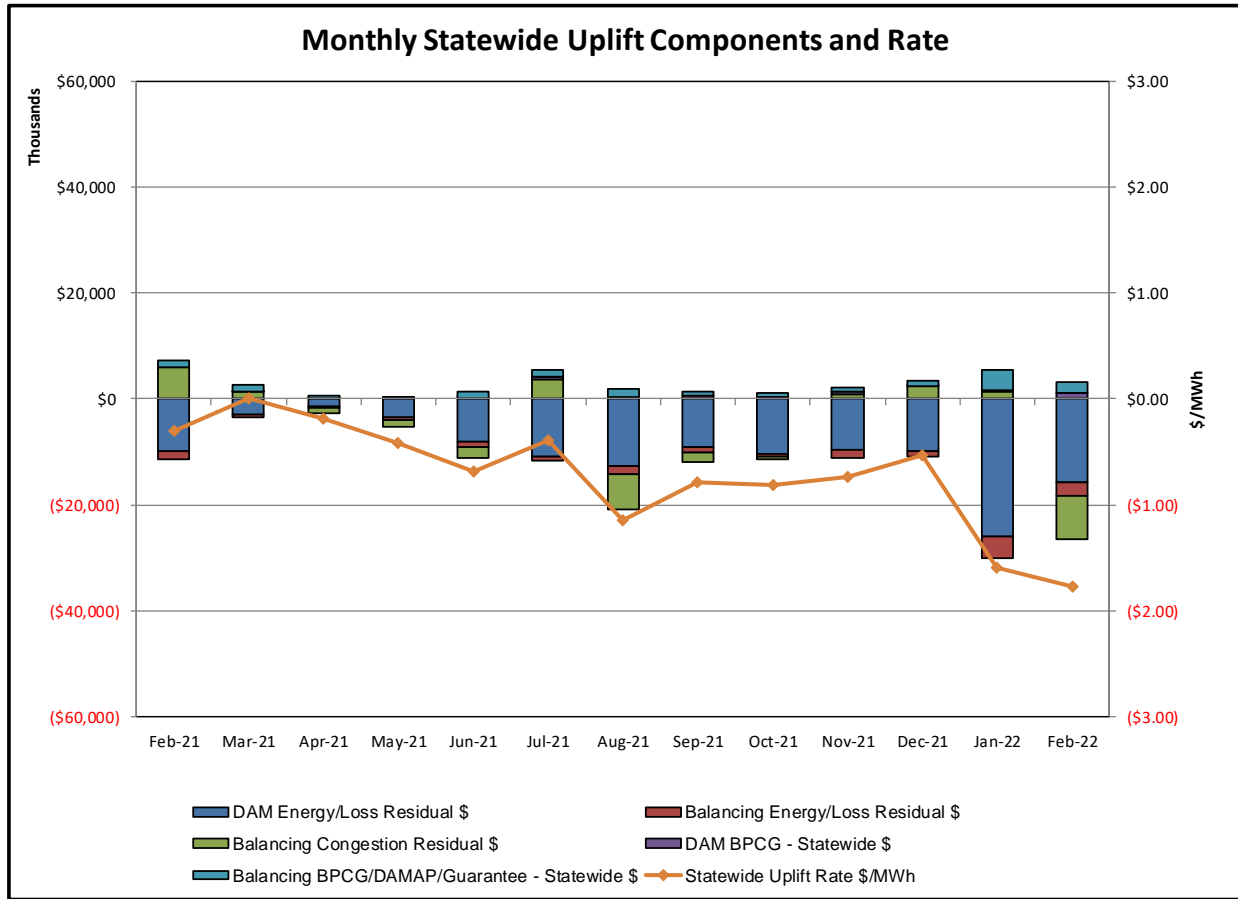
PAR Interconnection Congestion Coordination

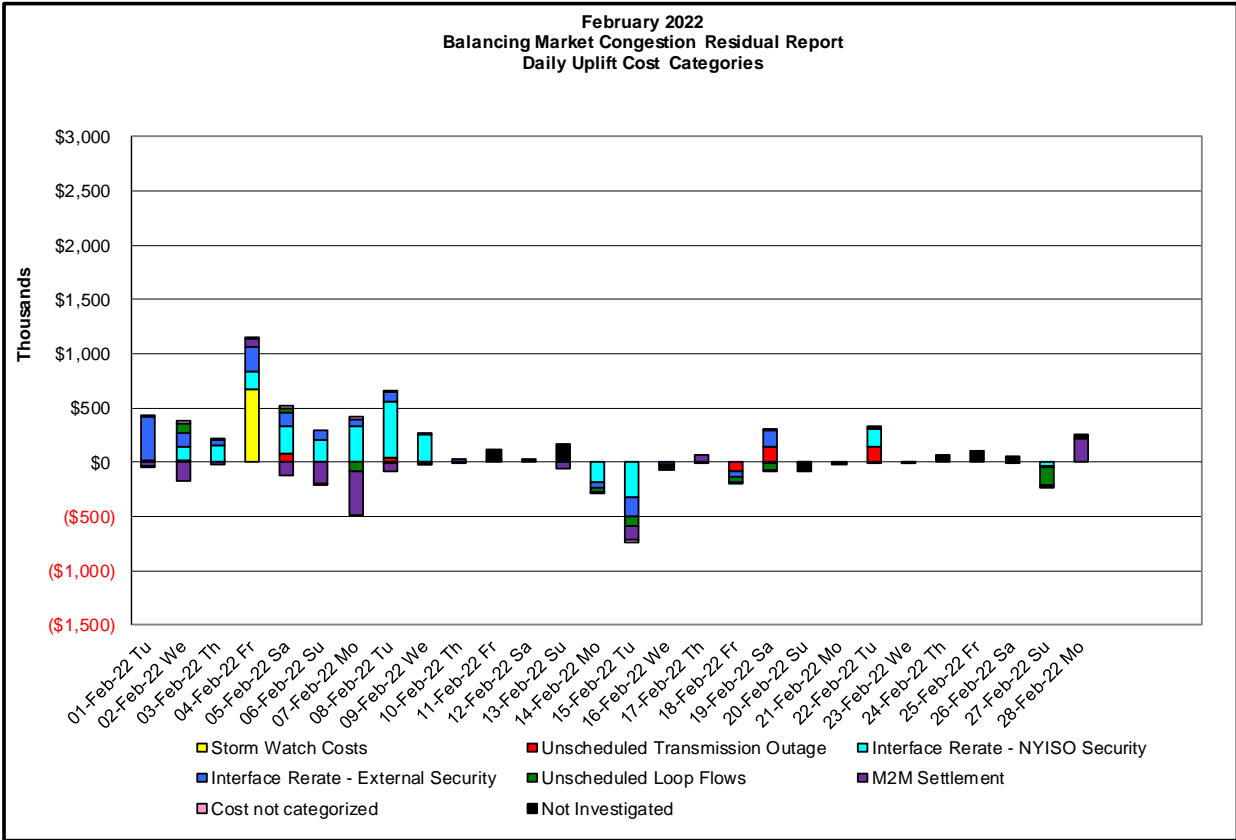
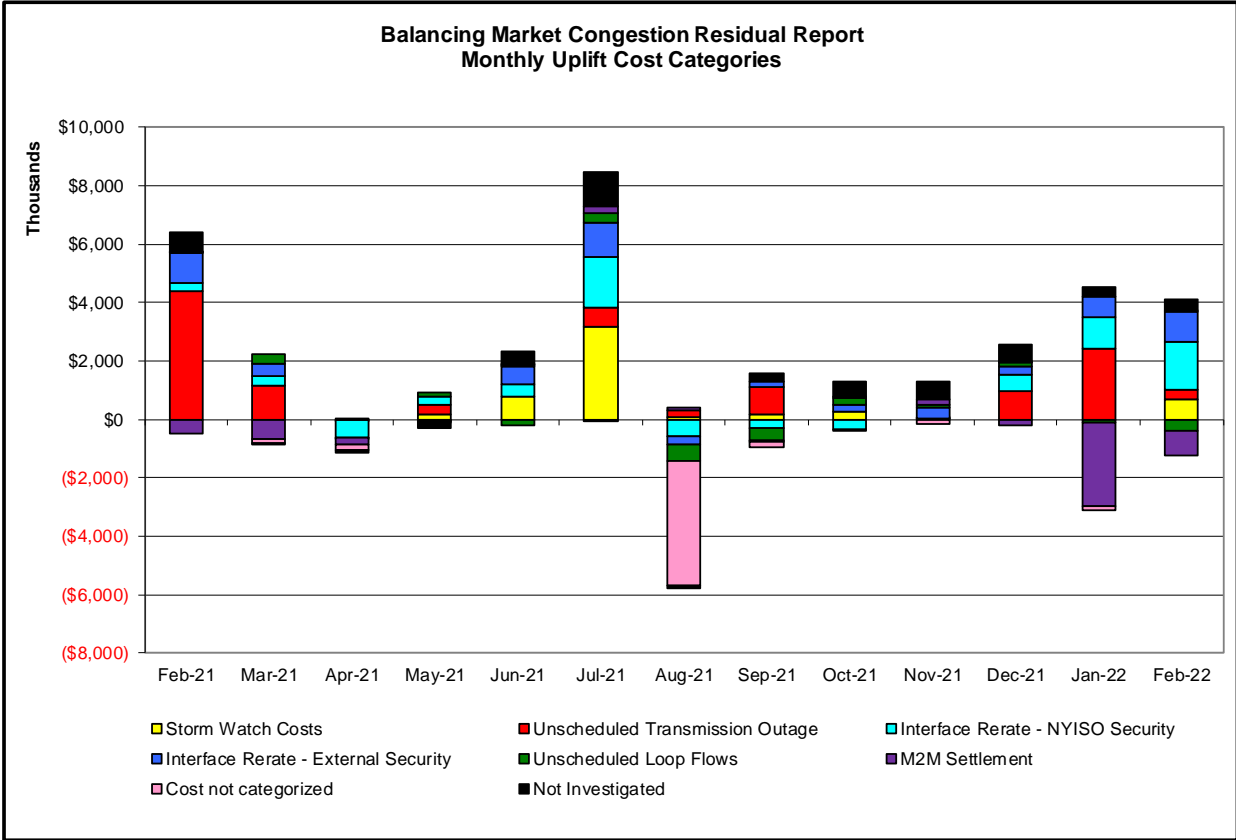
<u>Category</u>	<u>Description</u>
NY	Represents the value NY realizes from Market-to-Market PAR Coordination when experiencing congestion. This is the estimated savings to NY for additional deliveries into NY
RECO	Represents the value of PJM's obligation to deliver 80% of service to RECO load over Ramapo 5018. This is the estimated reduction in NYCA congestion due to the PJM delivery of RECO over Ramapo 5018.
M2M PAR Settlement	Market-to-Market PAR Coordination settlement on coordinated flowgates. Through April 2017 this value was included in the NY and RECO categories. The positive sign convention indicates settlement to NY while the negative indicates settlement to PJM.





Market Performance Metrics





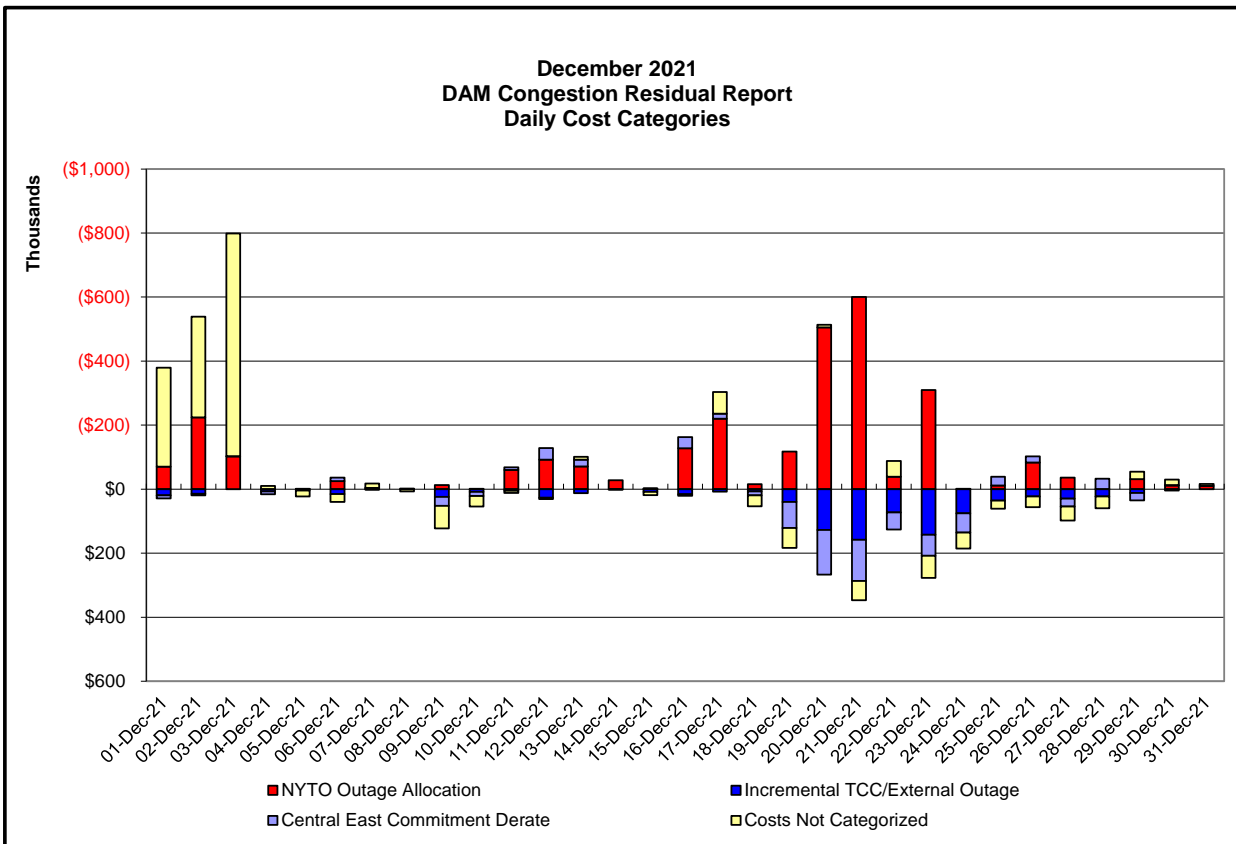
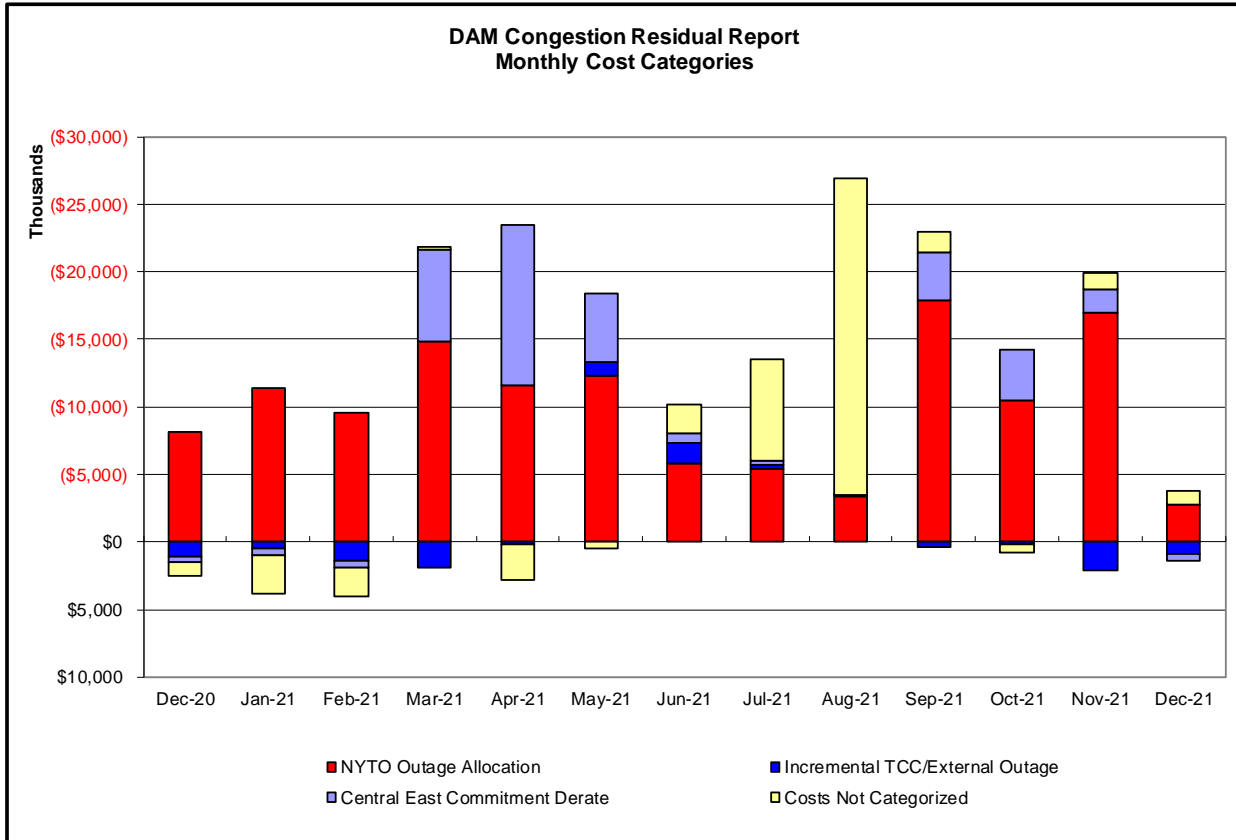
Day's investigated in February: 1,2,3,4,5,6,7,8,9,14,15,18,19,22,27		
Event	Description	February Dates
	Thunder Storm Alert, Buchanan North 345/138kV (Bank TA5)	4
	Thunder Storm Alert, Rock Tavern - Roseton 345kV (#311)	4
	Early return-to-service Niagara-Dysinger 345kV (#ND1)	18
	Extended outage Hopatcon-Ramapo 500kV (#5018)	22
	Extended outage of Moses-Massena 230kV (#MMS1 & #MMS2)	8
	Extended outage Scriba-Volney 345kV (#20)	2,3
	Forced outage Alps-Berkshire 345kV (#393), Berkshire-Northfield 345kV (#312)	19
	Forced outage FoxHills-Greenwood 138kV (#29231)	5
	Derate Canandga-StonyRdg 230kV (#68)	22
	Derate Central East	1-8
	Derate Edic 345/230kV (#Bk2) for BUS:NSCTLD#77 14&2&93&BK2&C1&3	4
	Derate Edic 345/230kV (#Bk2) I/o EDIC 345_115_BK3	4
	Derate Farragut-Gowanus 345kV (#41)	7
	Derate Farragut-Gowanus 345kV (#42)	6
	Derate Goethals-Gowanus 345kV (#25) I/o SCB:GOETH(8):G23M&26&R26	5,9
	Derate Goethals-Gowanus 345kV (#26) I/o SCB:GOETH(3):25&22&R25	5
	Derate Gowanus-Goethals 345kV (#25)	8
	Derate Gowanus-Goethals 345kV (#26)	8,9
	Derate Mortimer-Sweden 115kV (#113) I/o Niagara-STA 255 345kV (#NH2)	1,2,6
	Derate N.SctInd 345/115kV (#Bk1) I/o BUS:NSCTLD#77 14&2&93&BK2&C1&3	3
	Derate N.Troy-Sycaway 115kV (#16) I/o Berkshire-Alps 345kV (#393)	3
	Derate Rocktavern-Roseton 345kV (#311) I/o TWR Y88&Y94&TA5	1
	Derate Scriba-Volney 345kV (#21) I/o \$SCB EDIC R10 W/ B-BUS O/S	2
	Derate UPNY-CONED	22
	NYCA DNI Ramp Limit	4,6,8,14,15,19
	Uprate Central East	1,2,7,9,14,15,19,27
	Uprate East 179th ST-Hellgate 138kV (#15055)	14,15
	Uprate Gowanus-Goethals 345kV (#25)	7,15
	Uprate Gowanus-Goethals 345kV (#26)	7,15
	Uprate Harsnrad-Hinman 115kV (#908) I/o \$SCB NIAGARA 3122 W/ND1 OUT	14
	HQ_CEDARS - NY Scheduling Limit	1,5,8,15
	HQ_CHAT DNI Ramp Limit	1,4,6,14
	HQ_Chat-NY Scheduling Limit	15
	IESO_AC-NY Scheduling Limit	1,5,7
	NE_AC Active DNI Ramp Limit	2,4,5,8,14,15,18,19,27
	NE_AC-NY Scheduling Limit	1,3,6,8,9,15,19
	NE_NNC1385 Scheduling Limit	9,27
	PJM_AC - NY Scheduling Limit	1,2,4,6,7,15,22
	PJM_AC Active DNI Ramp Limit	2,7
	Lake Erie Circulation, DAM-RTM exceeds +/-125MW; Central East	1,2,5,7,9,14,15,19,22,27
	Lake Erie Circulation, DAM-RTM exceeds +/-125MW; West	1,2,5,7-9,14,15,18,19,27

Real-Time Balancing Market Congestion Residual (Uplift Cost) Categories

<u>Category</u>	<u>Cost Assignment</u>	<u>Events Types</u>	<u>Event Examples</u>
Storm Watch	Zone J	Thunderstorm Alert (TSA)	TSA Activations
Transmission Outage Mismatch	Market-wide	Changes in DAM to RTM transfers related to transmission outage mismatch	Forced Line Outage, Unit AVR Outages, Early Line Return from Outage
Interface/Facility Rerate - NYISO Security	Market-wide	Changes in DAM to RTM transfers not related to transmission outage	Interface/Facility Rerates due to RTM voltages
Interface Rerate - External Security	Market-wide	Changes in DAM to RTM transfers related to External Control Area Security Events	TLR Events, External Transaction Curtailments
Unscheduled Loop Flows	Market-wide	Changes in DAM to RTM unscheduled loop flows impacting NYISO Interface transmission constraints	DAM to RTM Lake Erie Loop Flows exceeding +/- 125 MW
M2M Settlement	Market-wide	Settlement result inclusive of coordinated redispatch and Ramapo flowgates	

Monthly Balancing Market Congestion Report Assumptions/Notes

- 1) Storm Watch Costs are identified as daily total uplift costs
- 2) Days with a value of BMCR less M2M Settlement of \$100K/HR, shortfall of \$200K/Day or more, or surplus of \$100K/Day or more are investigated.
- 3) Uplift costs associated with multiple event types are apportioned equally by hour



Day-Ahead Market Congestion Residual Categories

<u>Category</u>	<u>Cost Assignment</u>	<u>Events Types</u>	<u>Event Examples</u>
NYTO Outage Allocation	Responsible TO	Direct allocation to NYTO's responsible for transmission equipment status change.	DAM scheduled outage for equipment modeled in-service for the TCC Auction.
Incremental TCC/External Outage Impacts	All TO by Monthly Allocation Factor	Allocation associated with transmission equipment status change caused by change in status of external equipment or change in status of equipment associated with Incremental TCC.	Tie line required out-of-service by TO of neighboring control area.
Central East Commitment Derate	All TO by Monthly Allocation Factor	Reductions in the DAM Central East_VC limit as compared to the TCC Auction limit, which are not associated with transmission line outages.	

