

# ***Operations Performance Metrics Monthly Report***



## ***January 2022 Report***

### **Operations & Reliability Department New York Independent System Operator**

Prepared by NYISO Operations Analysis and Services, based on settlements initial invoice data collected on or before February 8, 2022.

# **Table of Contents**

- ◆ **Highlights**
  - *Operations Performance*
  
- ◆ **Reliability Performance Metrics**
  - *Alert State Declarations*
  - *Major Emergency State Declarations*
  - *IROL Exceedance Times*
  - *Balancing Area Control Performance*
  - *Reserve Activations*
  - *Disturbance Recovery Times*
  - *Load Forecasting Performance*
  - *Wind Forecasting Performance*
  - *Wind Performance and Curtailments*
  - *BTM Solar Performance*
  - *BTM Solar Forecasting Performance*
  - *Net Wind and Solar Performance*
  - *Net Load Forecasting Performance*
  - *Lake Erie Circulation and ISO Schedules*
  
- ◆ **Broader Regional Market Performance Metrics**
  - *PAR Interconnection Congestion Coordination Monthly Value*
  - *PAR Interconnection Congestion Coordination Daily Value*
  - *Regional Generation Congestion Coordination Monthly Value*
  - *Regional Generation Congestion Coordination Daily Value*
  - *Regional RT Scheduling - PJM Monthly Value*
  - *Regional RT Scheduling - PJM Daily Value*
  
- ◆ **Market Performance Metrics**
  - *Monthly Statewide Uplift Components and Rate*
  - *RTM Congestion Residuals Monthly Trend*
  - *RTM Congestion Residuals Daily Costs*
  - *RTM Congestion Residuals Event Summary*
  - *RTM Congestion Residuals Cost Categories*
  - *DAM Congestion Residuals Monthly Trend*
  - *DAM Congestion Residuals Daily Costs*
  - *DAM Congestion Residuals Cost Categories*
  - *NYCA Unit Uplift Components Monthly Trend*
  - *NYCA Unit Uplift Components Daily Costs*
  - *Local Reliability Costs Monthly Trend & Commitment Hours*
  - *TCC Monthly Clearing Price with DAM Congestion*
  - *ICAP Spot Market Clearing Price*
  - *UCAP Awards*

## January 2022 Operations Performance Highlights

- Peak load of 23,237 MW occurred on 1/11/2022 HB 17
- All-time winter capability period peak load of 25,738 MW occurred on 01/07/2014 HB 18
- 0 hours of Thunderstorm Alerts were declared
- 297.08 hours of NERC TLR level 3 curtailment called in response to high levels of clockwise loop flow impacting NY congestion.
- High levels of BMCR on 1/11 due to extended outage of Dysinger-Station 255 345kV (#DH1) and on 1/16 due to IESO initiated TLR curtailments that impacted NY interchange.
- To reduce risks from COVID-19, the NYISO continues to take several actions to maintain critical business operations and protect the health and well-being of our employees and stakeholders.

The following table identifies the estimated production cost savings associated with the Broader Regional Market initiatives.

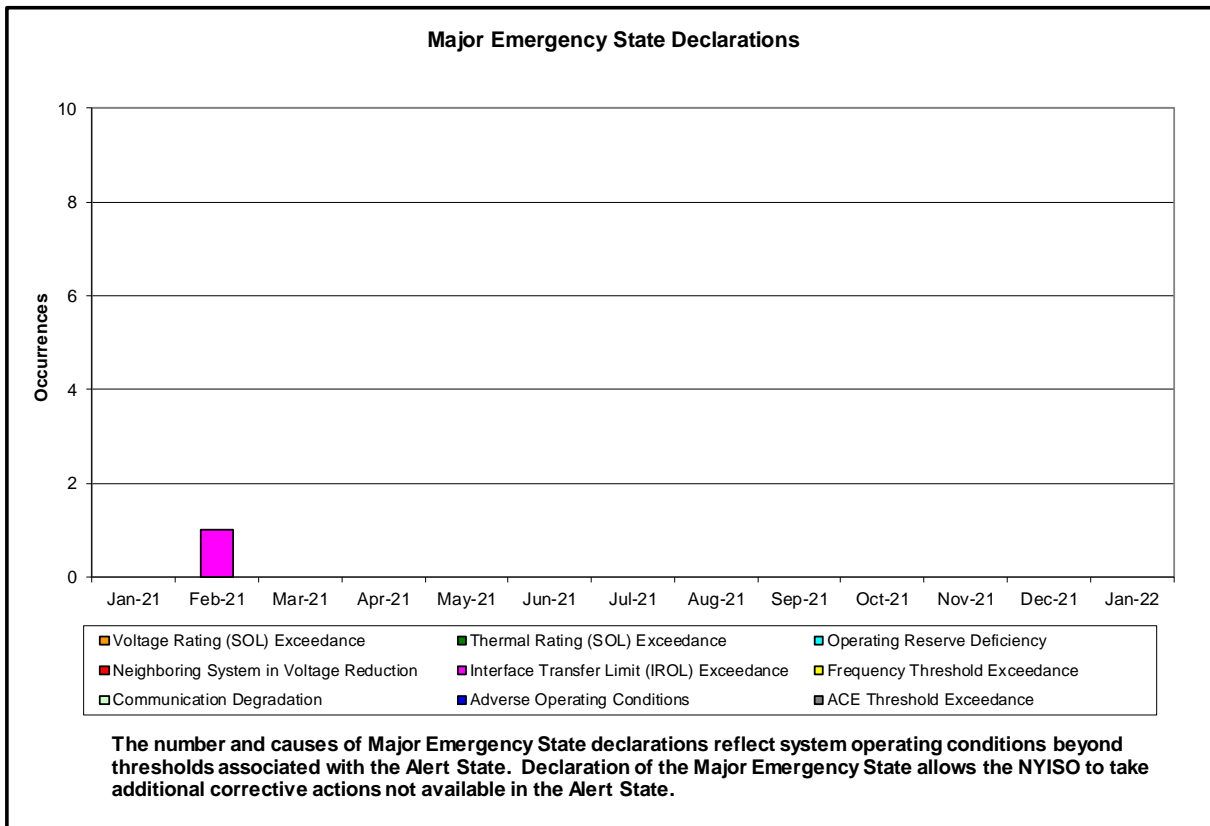
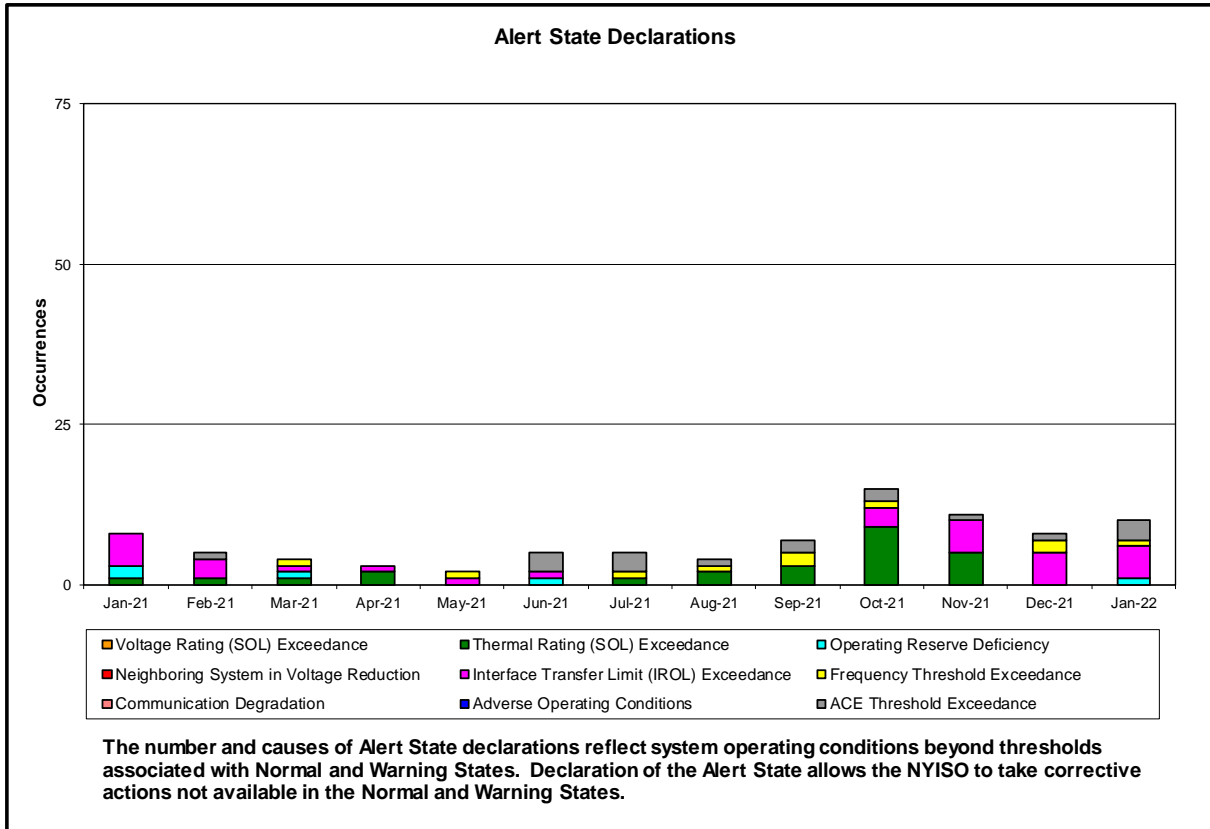
	Current Month Value (\$M)	Year-to-Date Value (\$M)
<b>NY Savings from PJM-NY Congestion Coordination</b>	(\$0.14)	(\$0.14)
<b>NY Savings from PJM-NY Coordinated Transaction Scheduling</b>	(\$0.38)	(\$0.38)
<b>NY Savings from NE-NY Coordinated Transaction Scheduling</b>	\$2.12	\$2.12
<b>Total NY Savings</b>	\$1.60	\$1.60
<b>Regional Savings from PJM-NY Coordinated Transaction Scheduling</b>	\$0.91	\$0.91
<b>Regional Savings from NE-NY Coordinated Transaction Scheduling</b>	\$1.35	\$1.35
<b>Total Regional Savings</b>	\$2.26	\$2.26

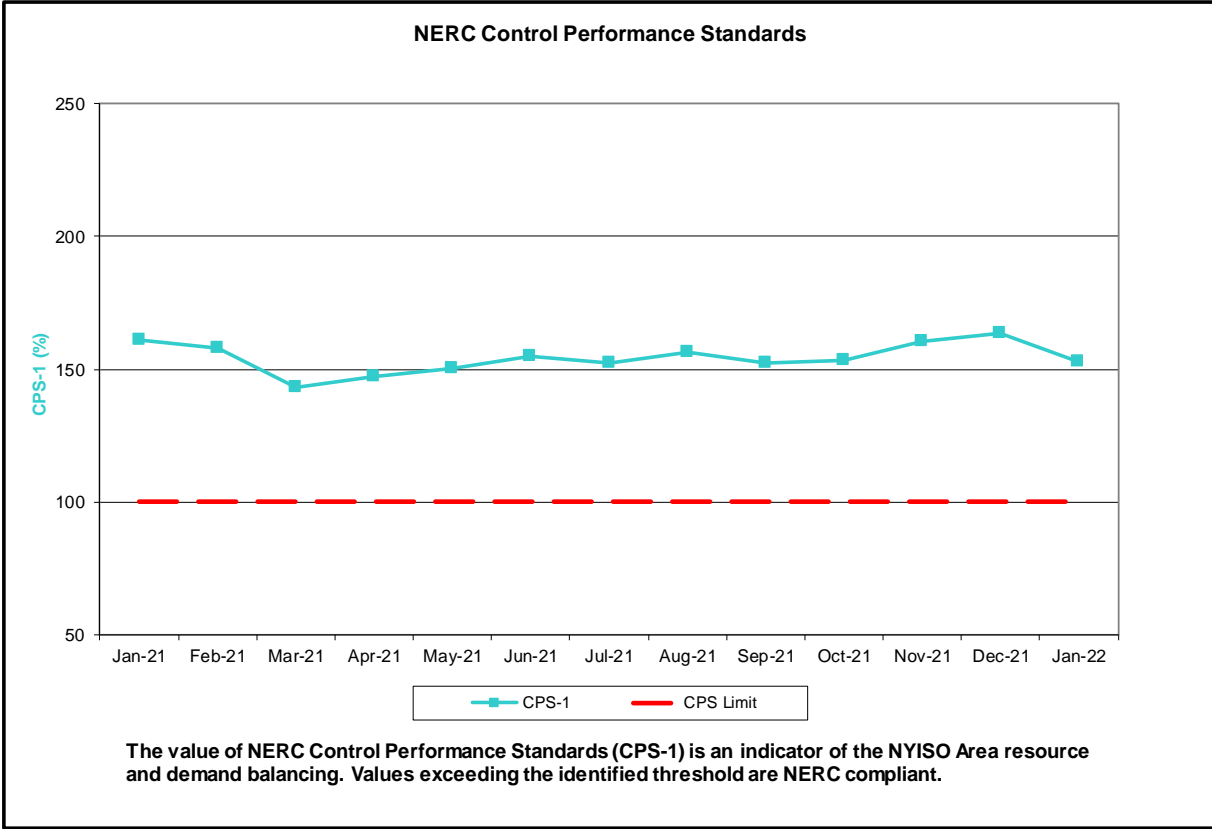
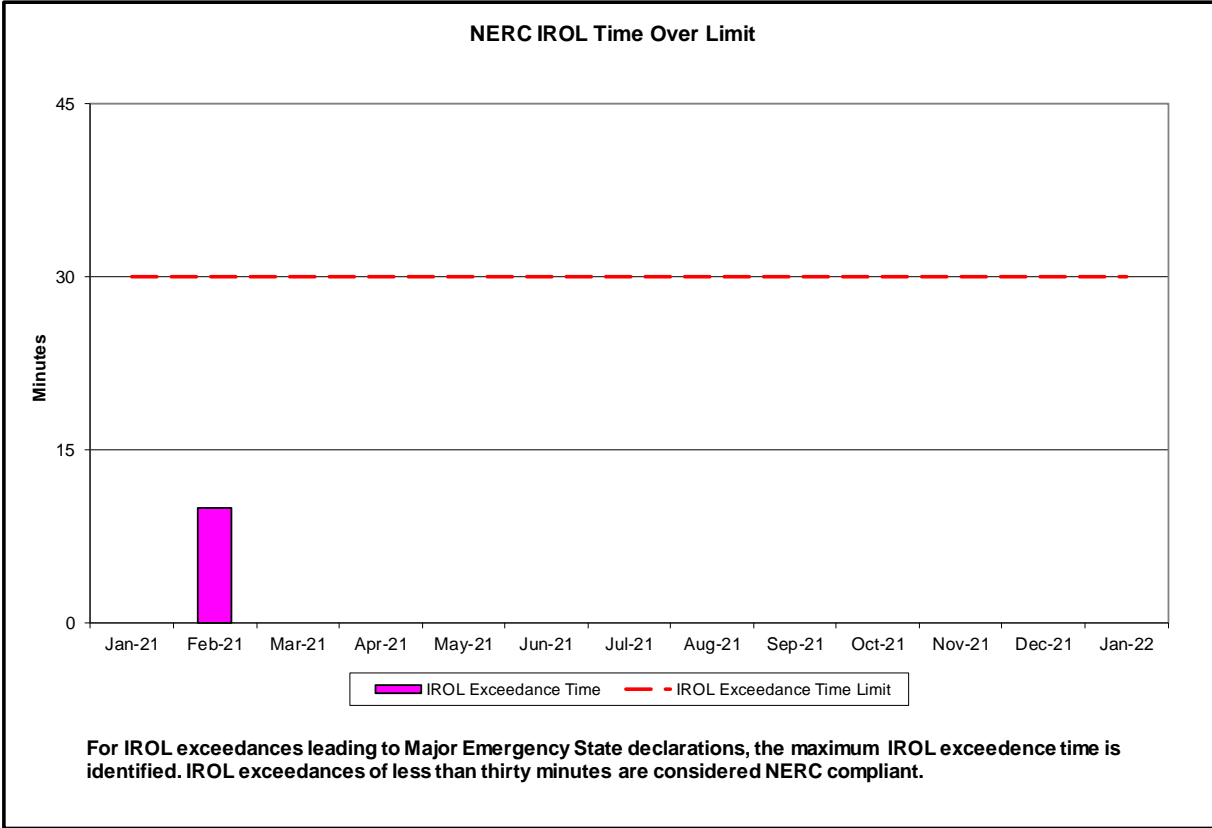
- Statewide uplift cost monthly average was (\$1.59)/MWh.
- The following table identifies the Monthly ICAP spot market prices and the price delta.

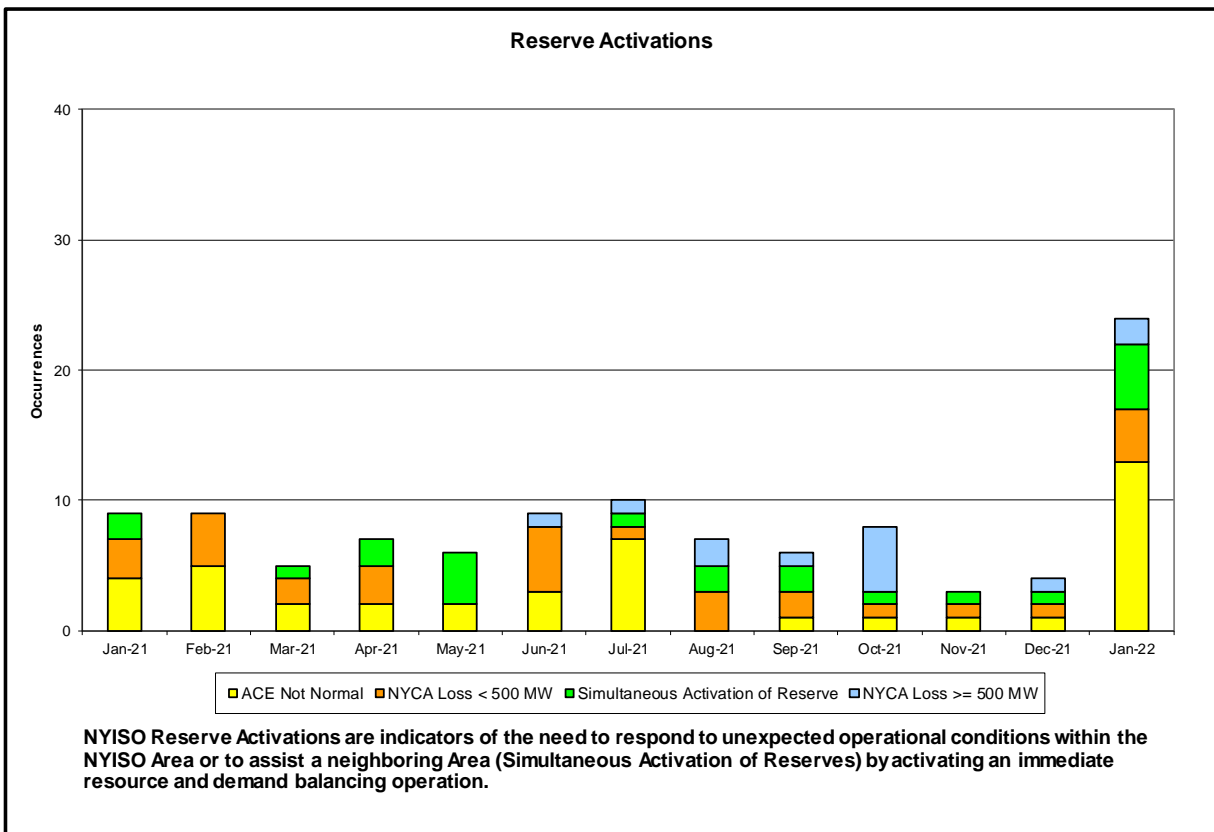
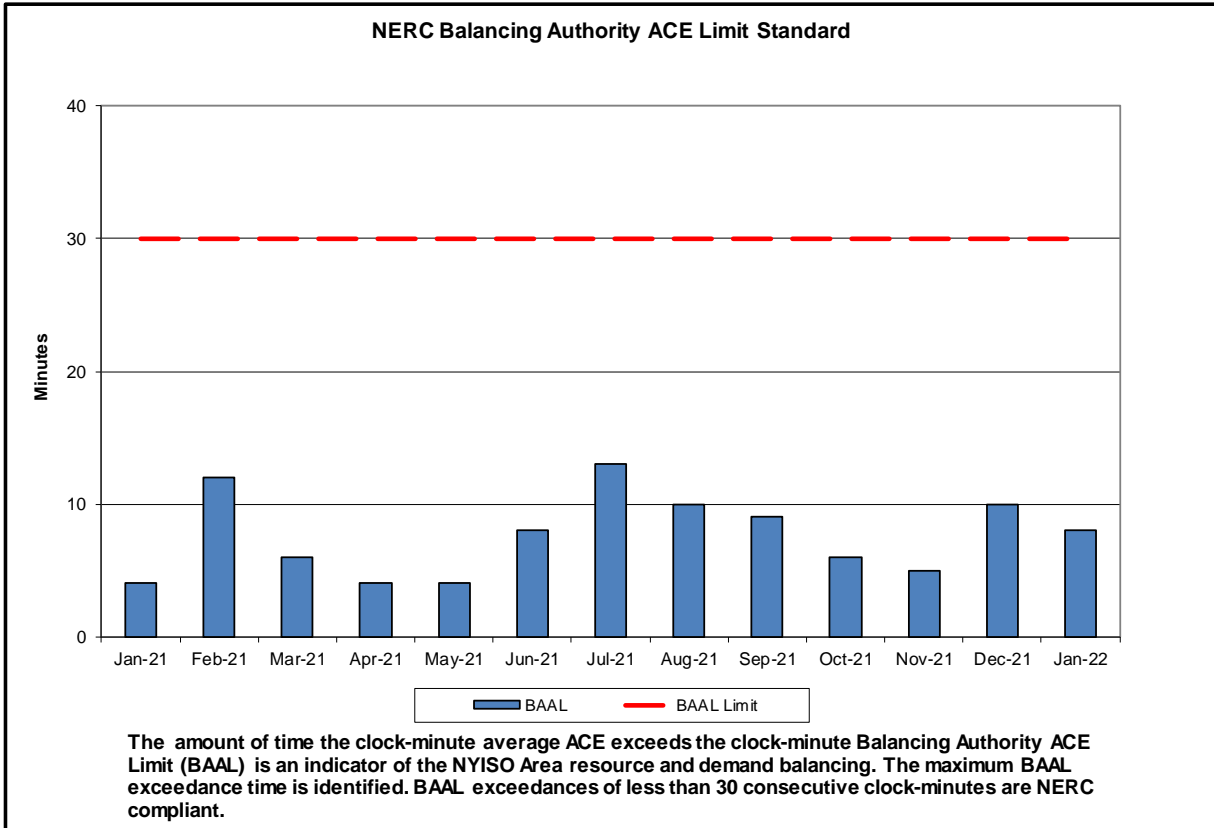
Spot Auction Price Results	NYCA	Lower Hudson Valley Zones	New York City Zone	Long Island Zone
February 2022 Spot Price	\$2.95	\$2.95	\$2.95	\$2.95
January 2022 Spot Price	\$3.82	\$3.82	\$3.82	\$3.82
Delta	(\$0.87)	(\$0.87)	(\$0.87)	(\$0.87)

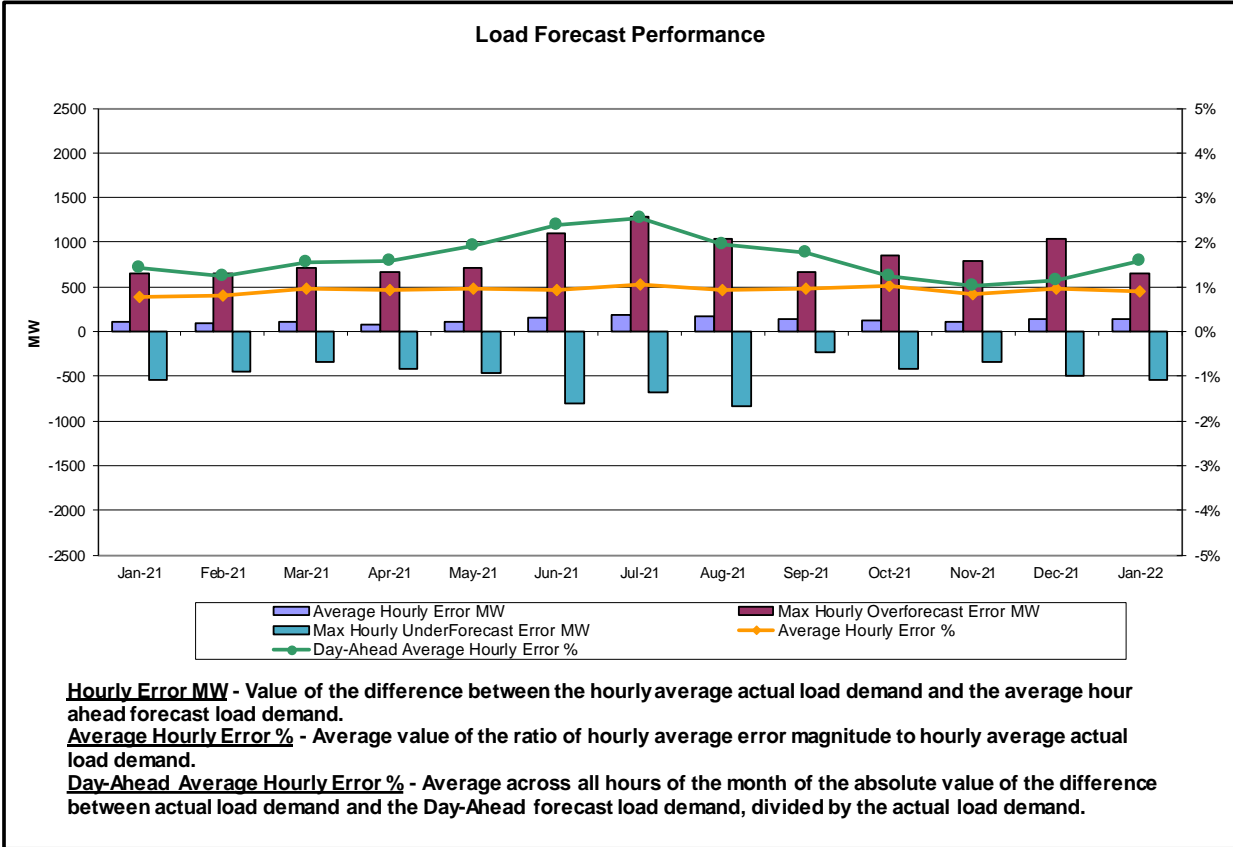
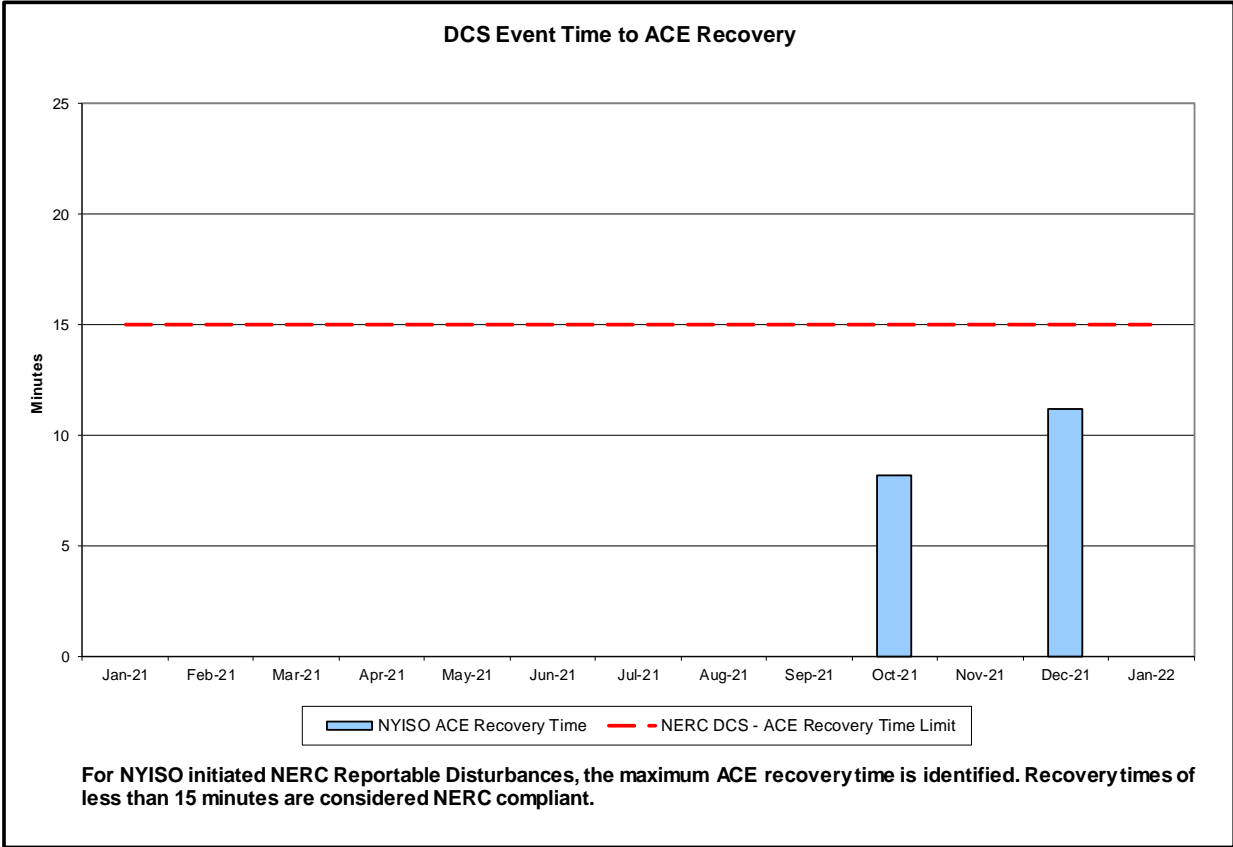
- NYCA experienced \$0.87 clearing price decline due to an increase in net Imports. The clearing price for Lower Hudson Valley, New York City, and Long Island zones were set by NYCA.

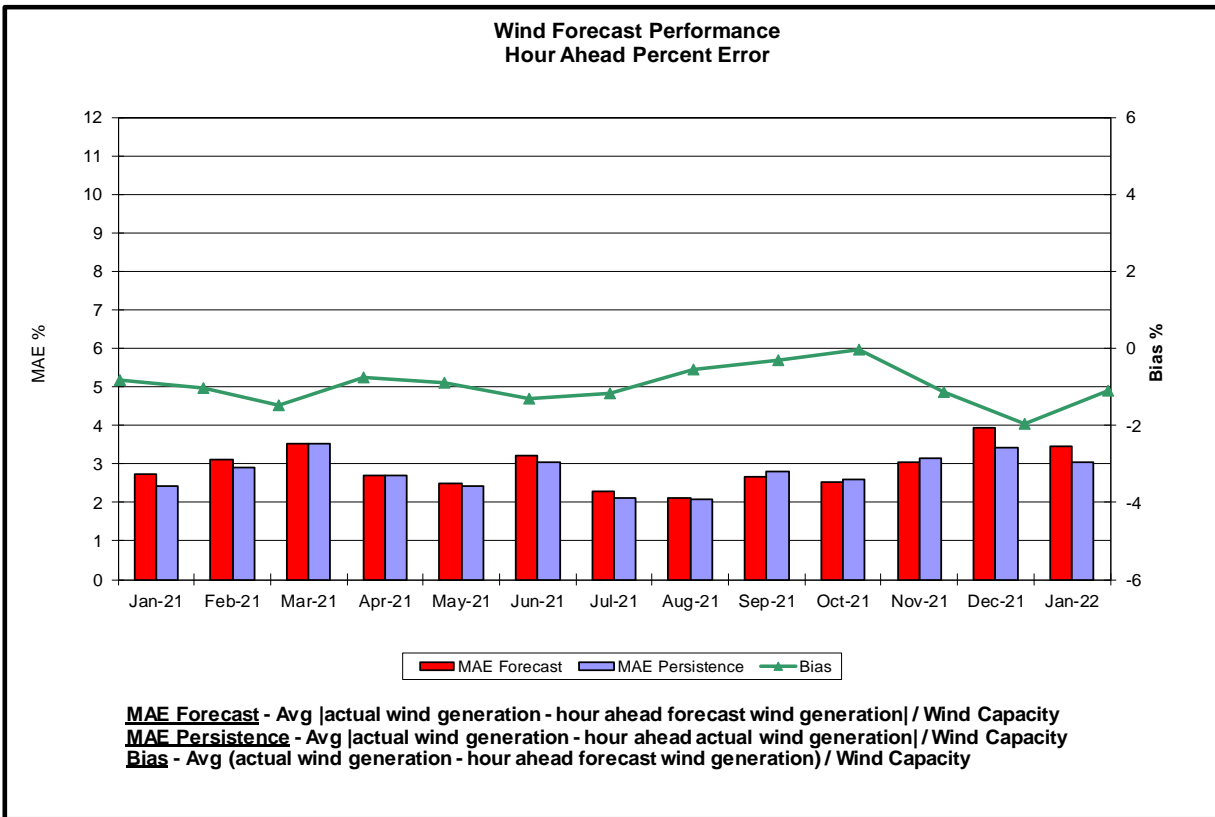
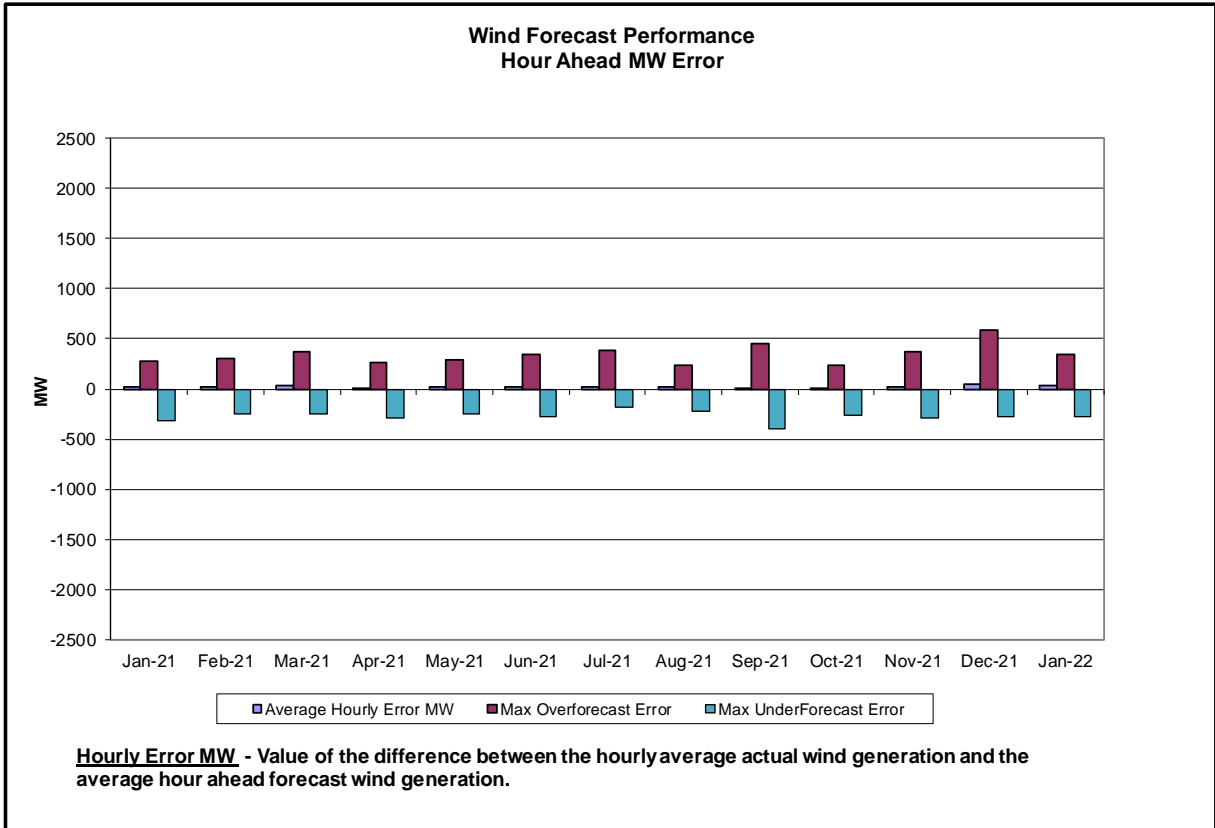
## Reliability Performance Metrics



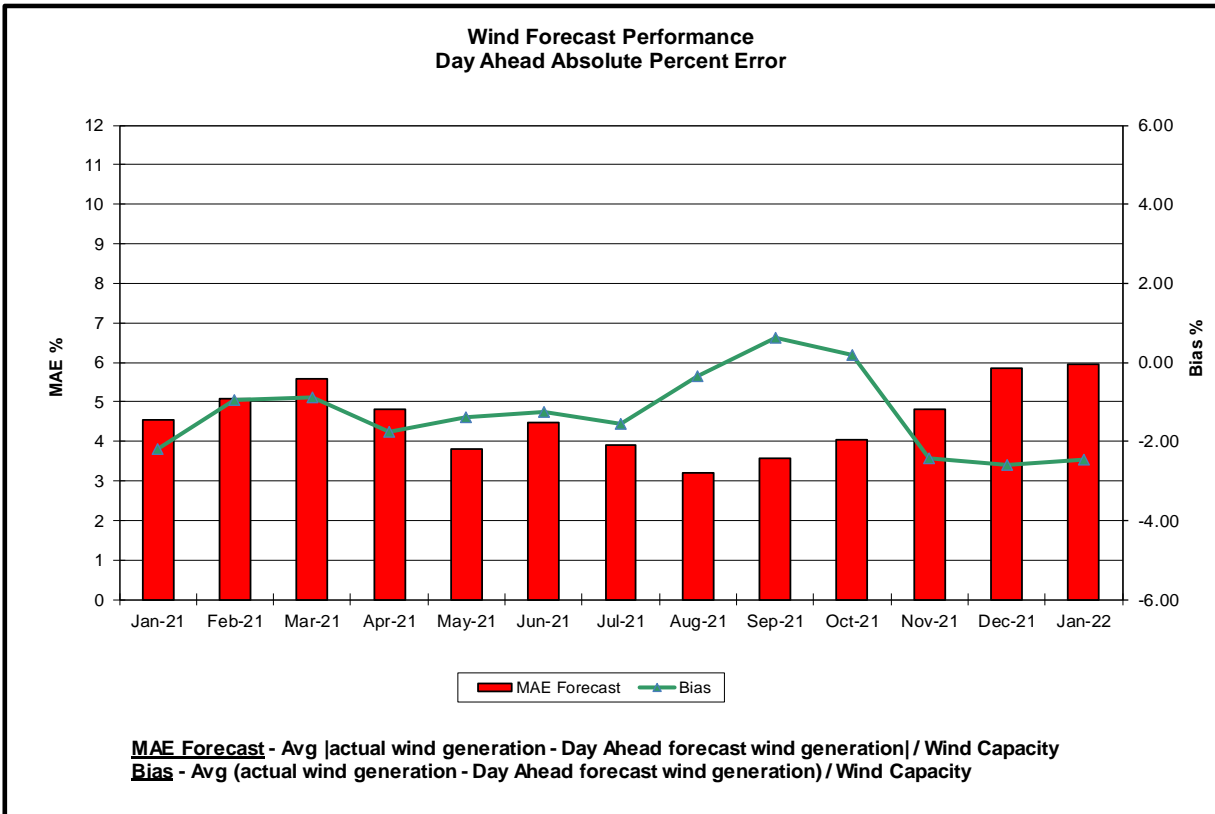
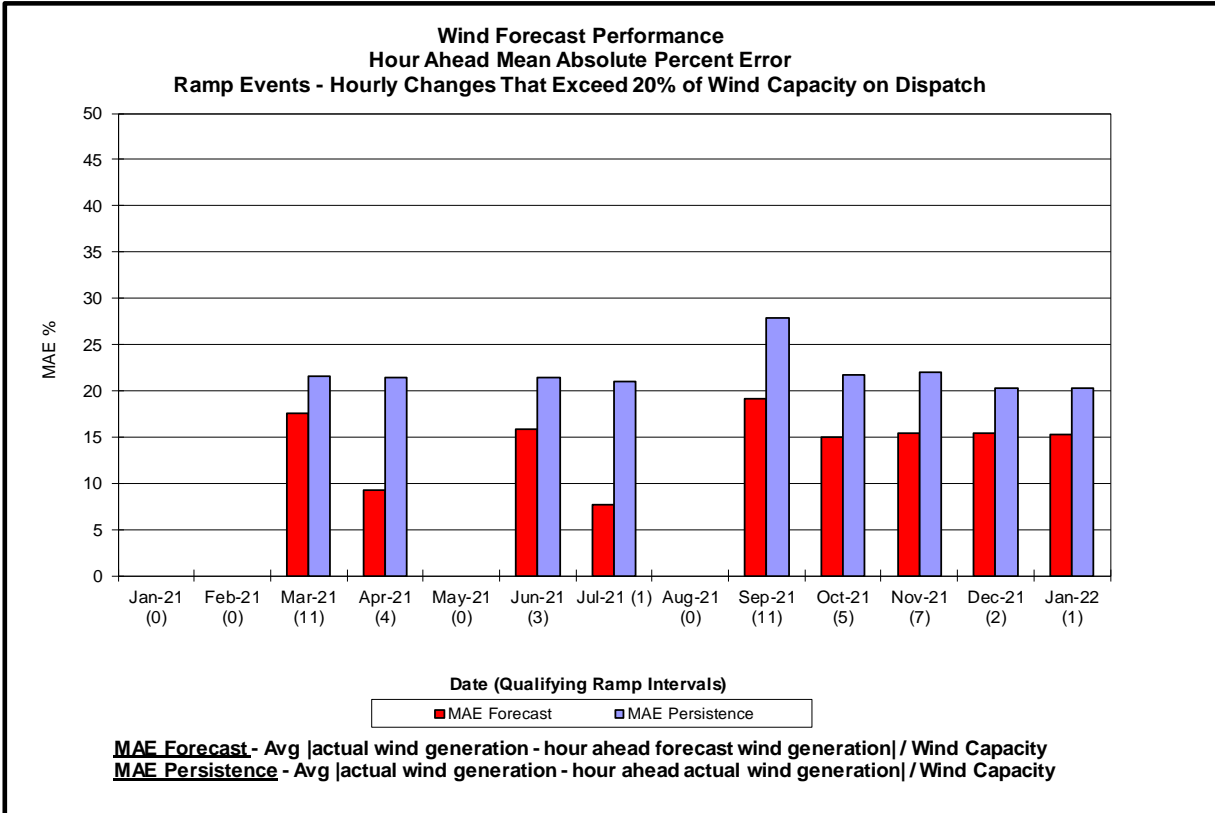


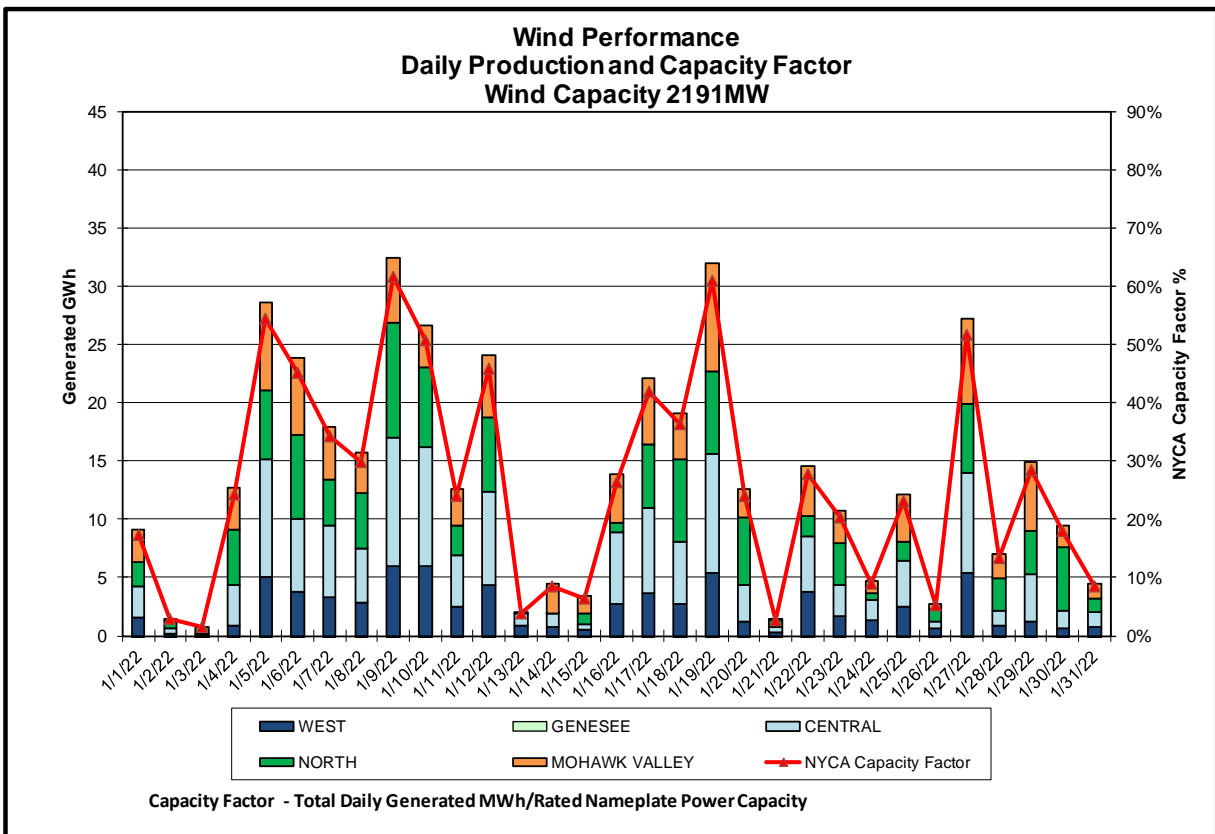
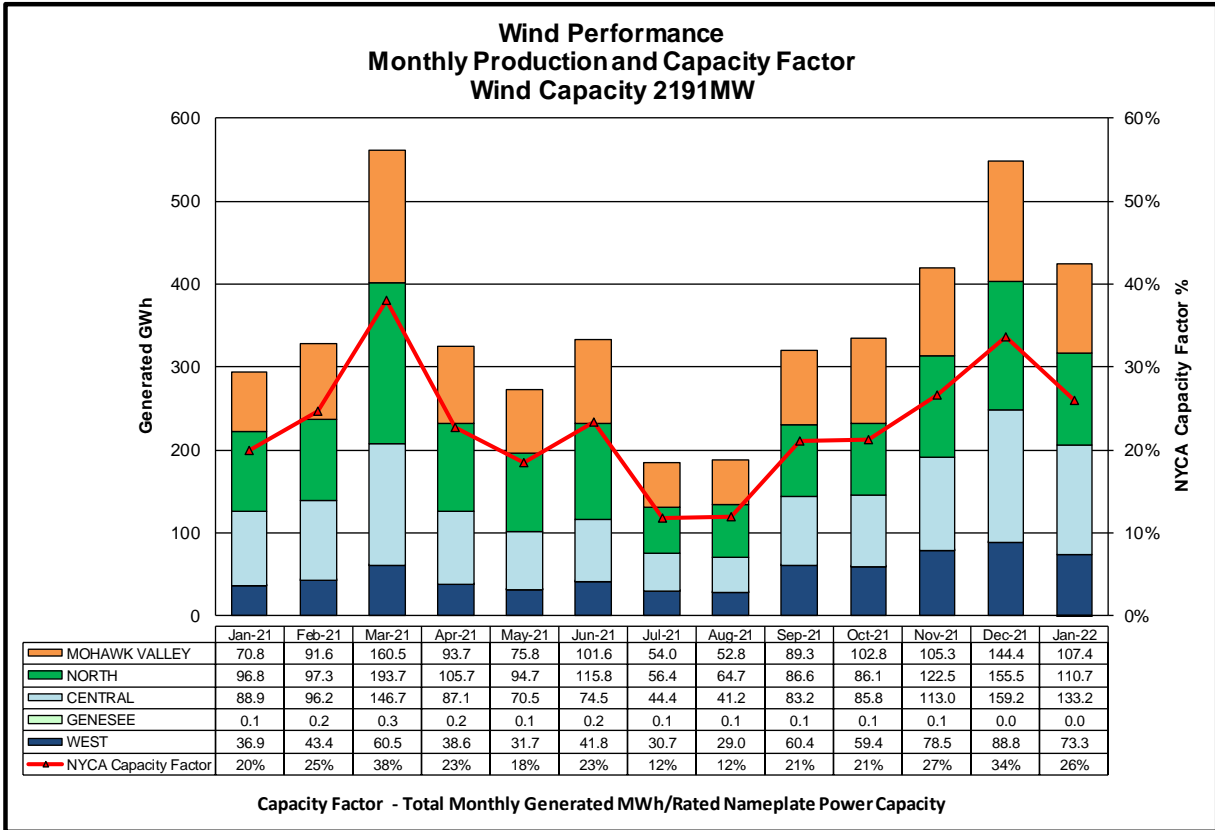


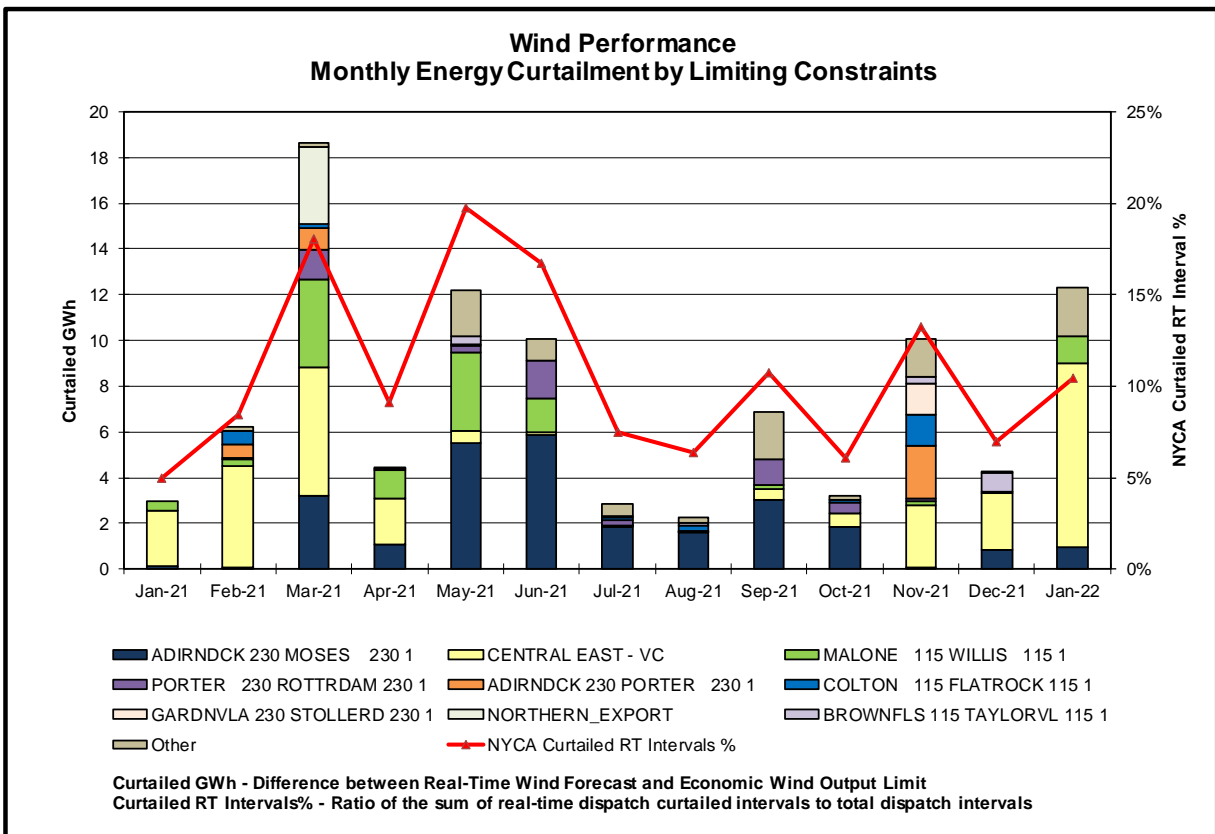
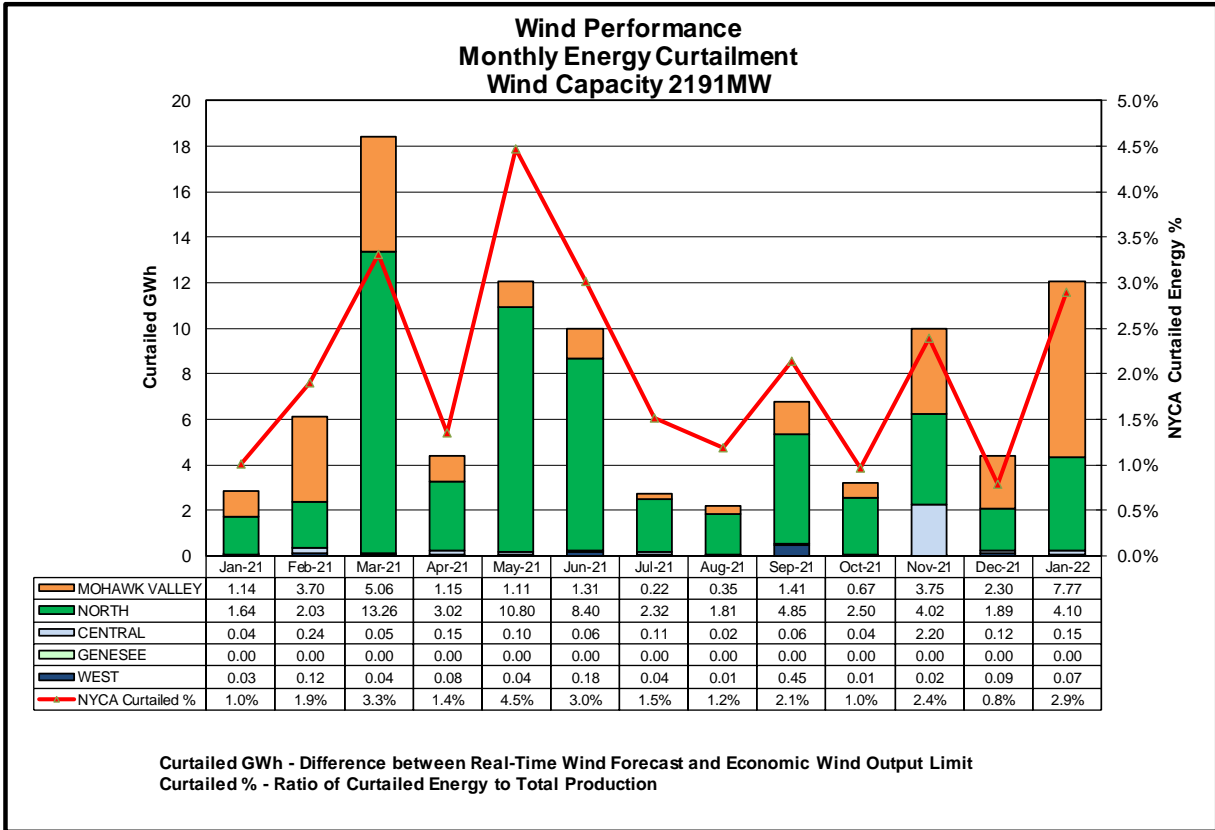


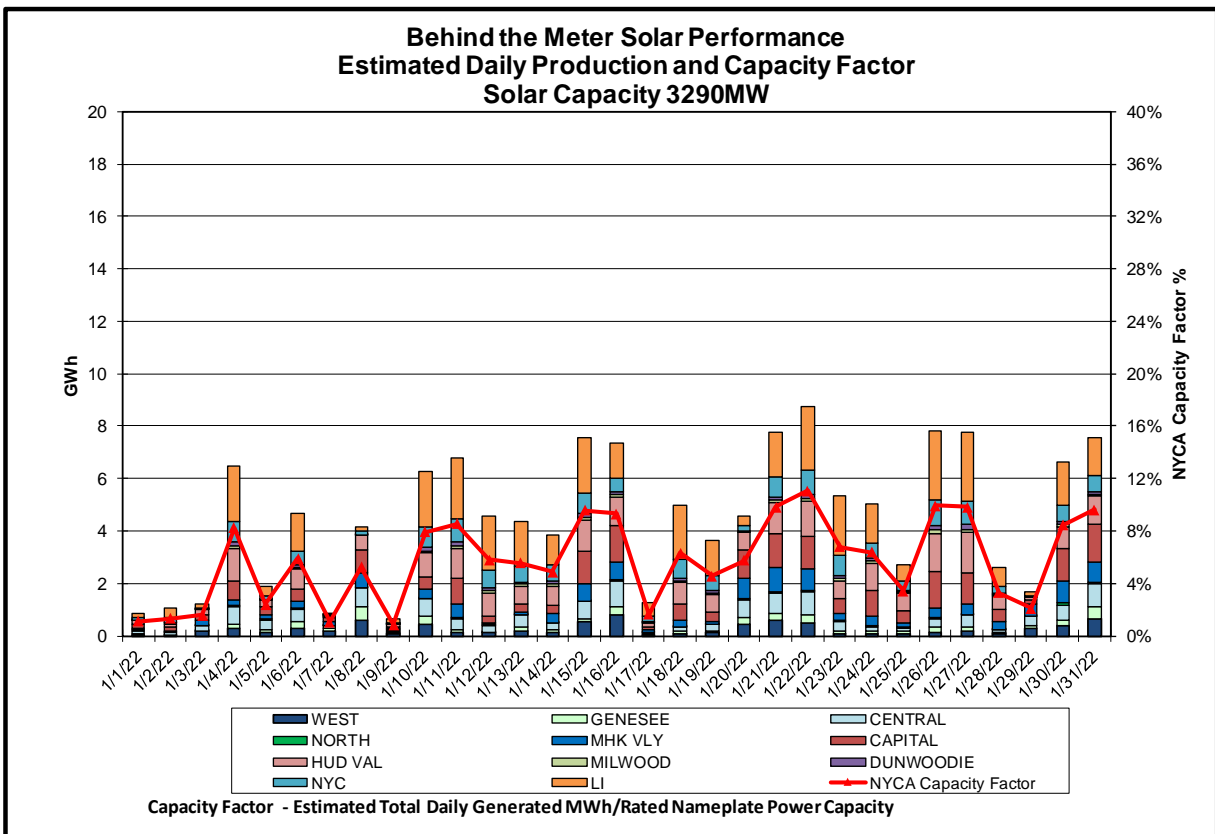
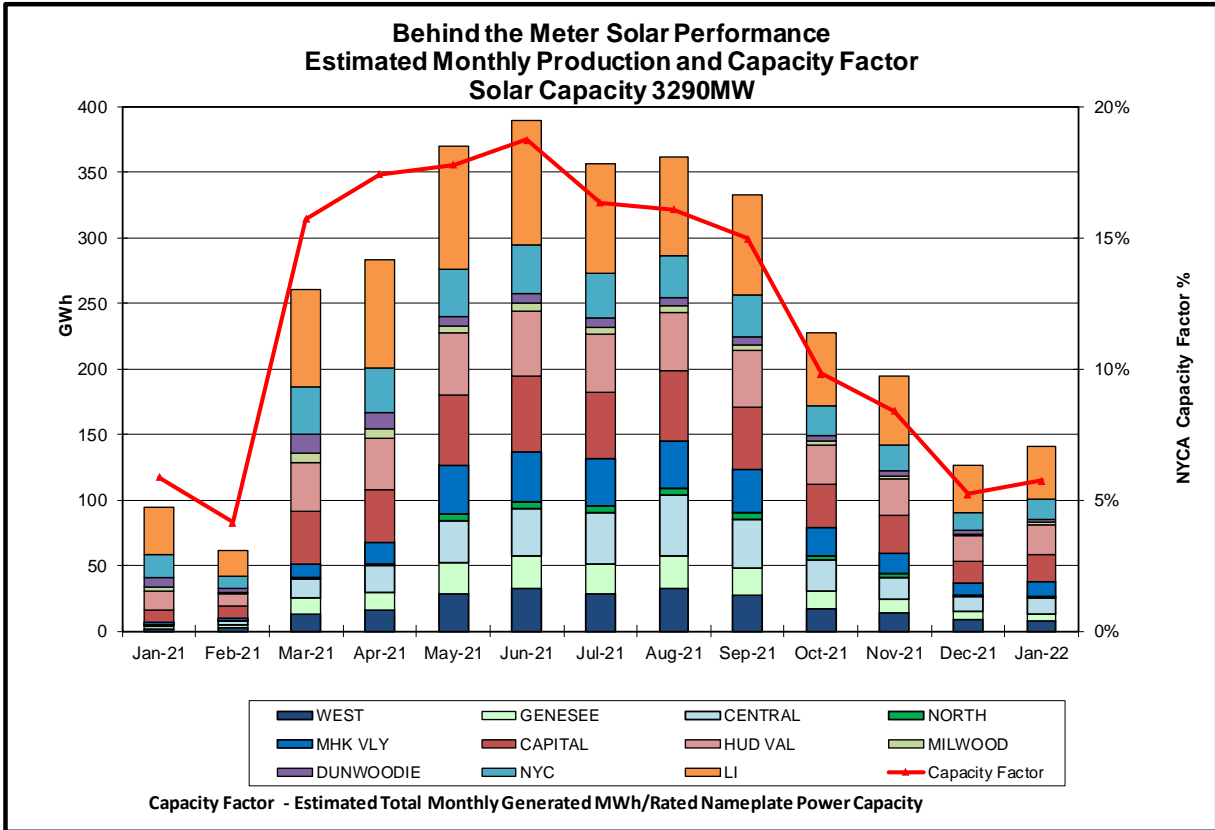


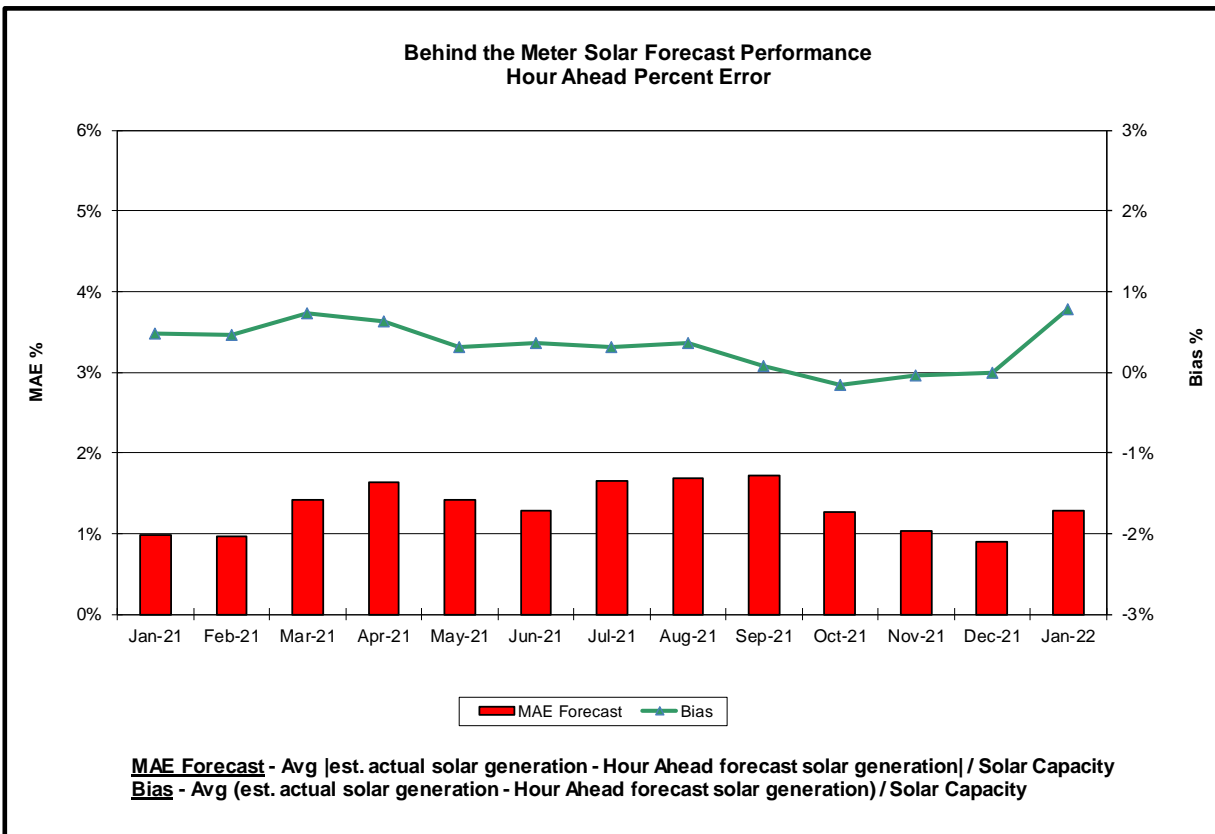
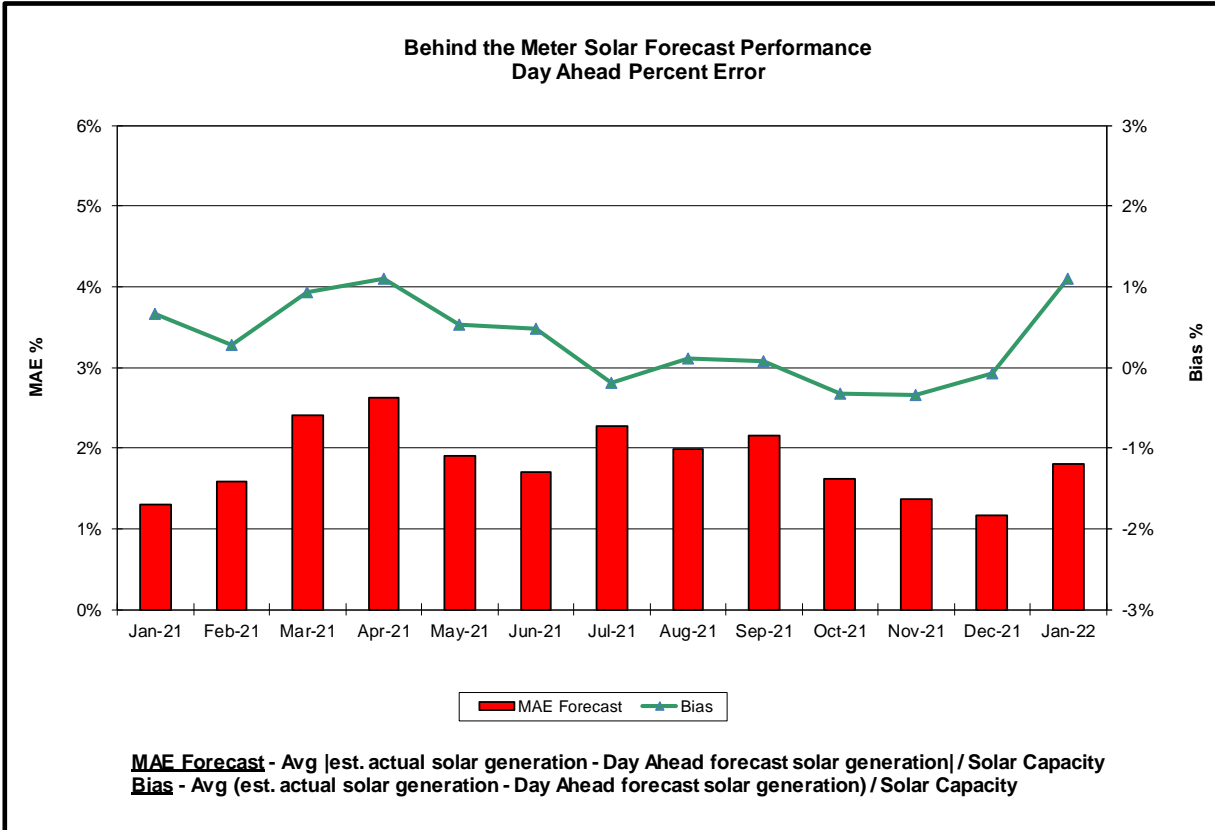


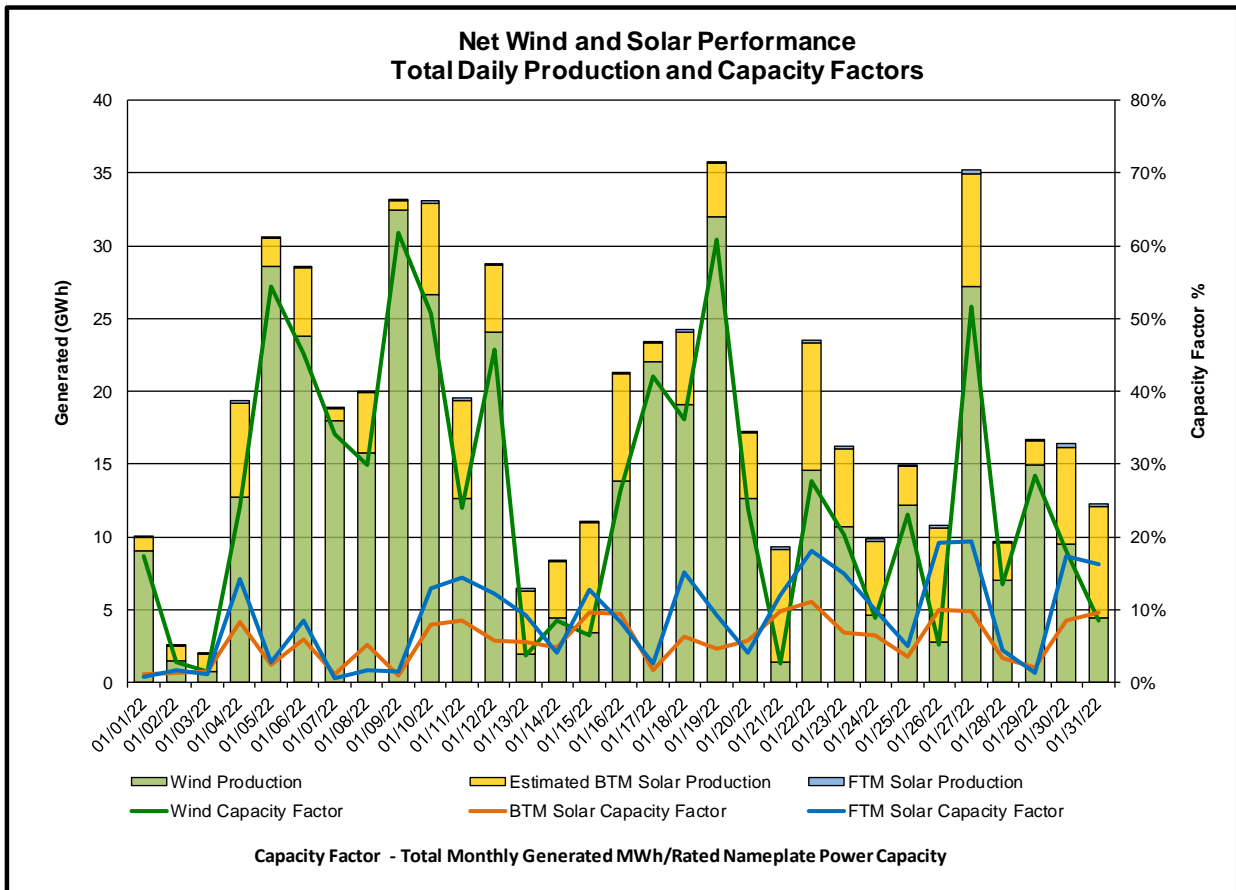
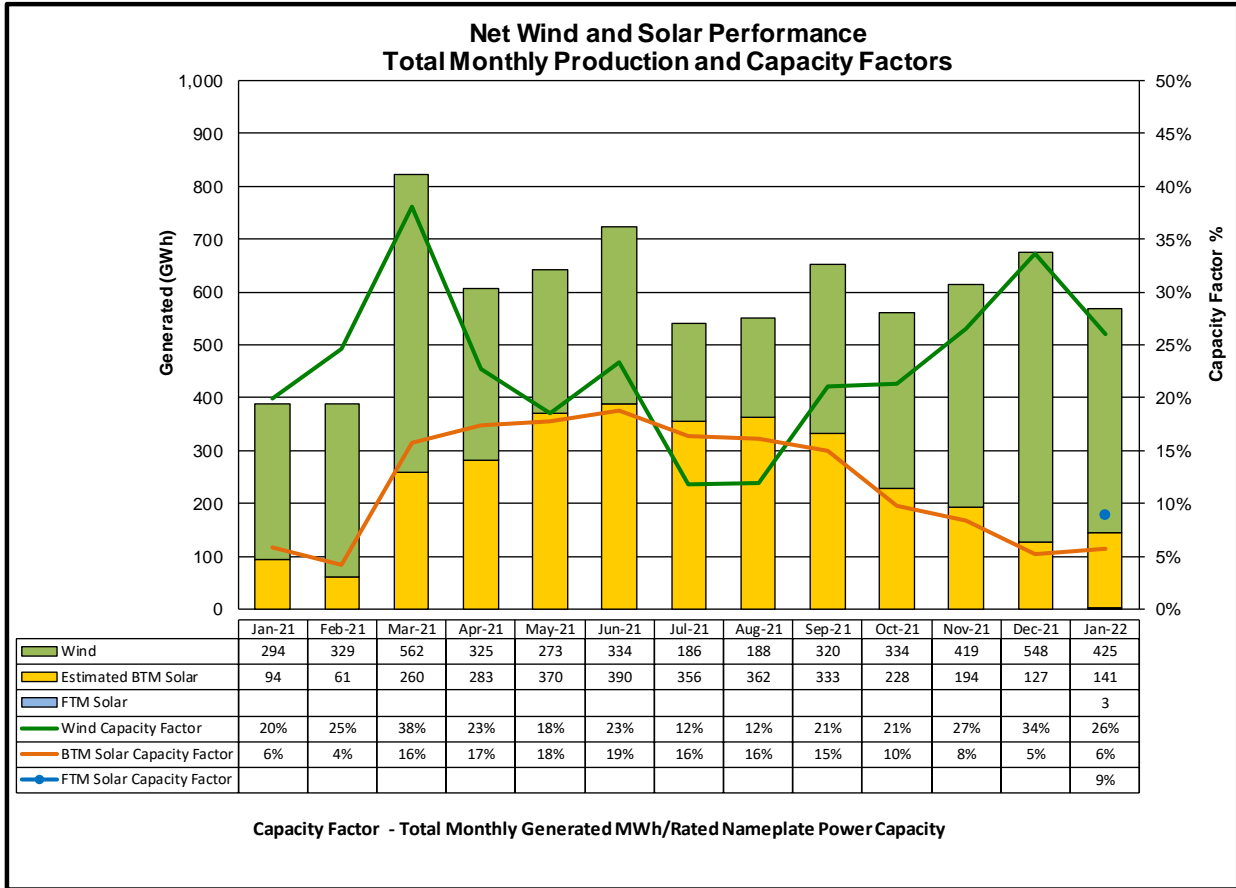


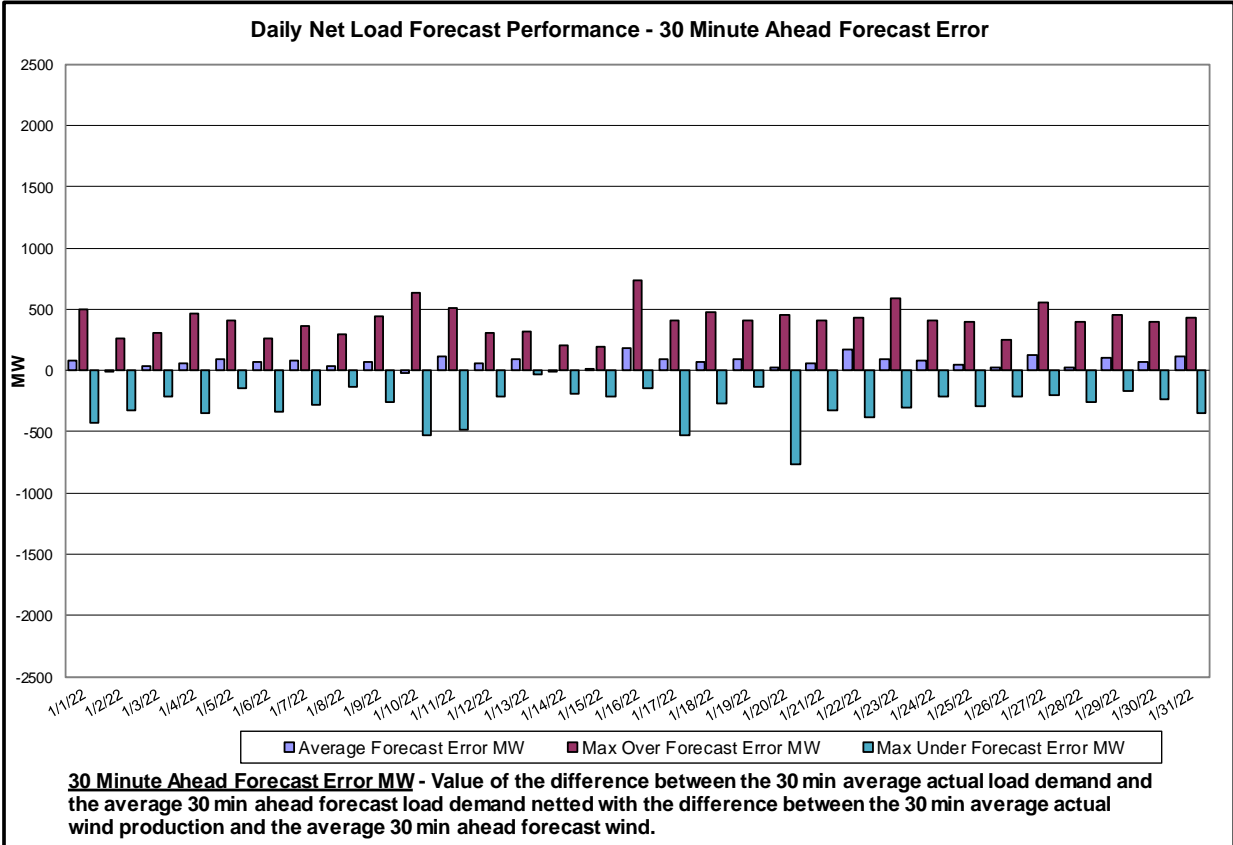
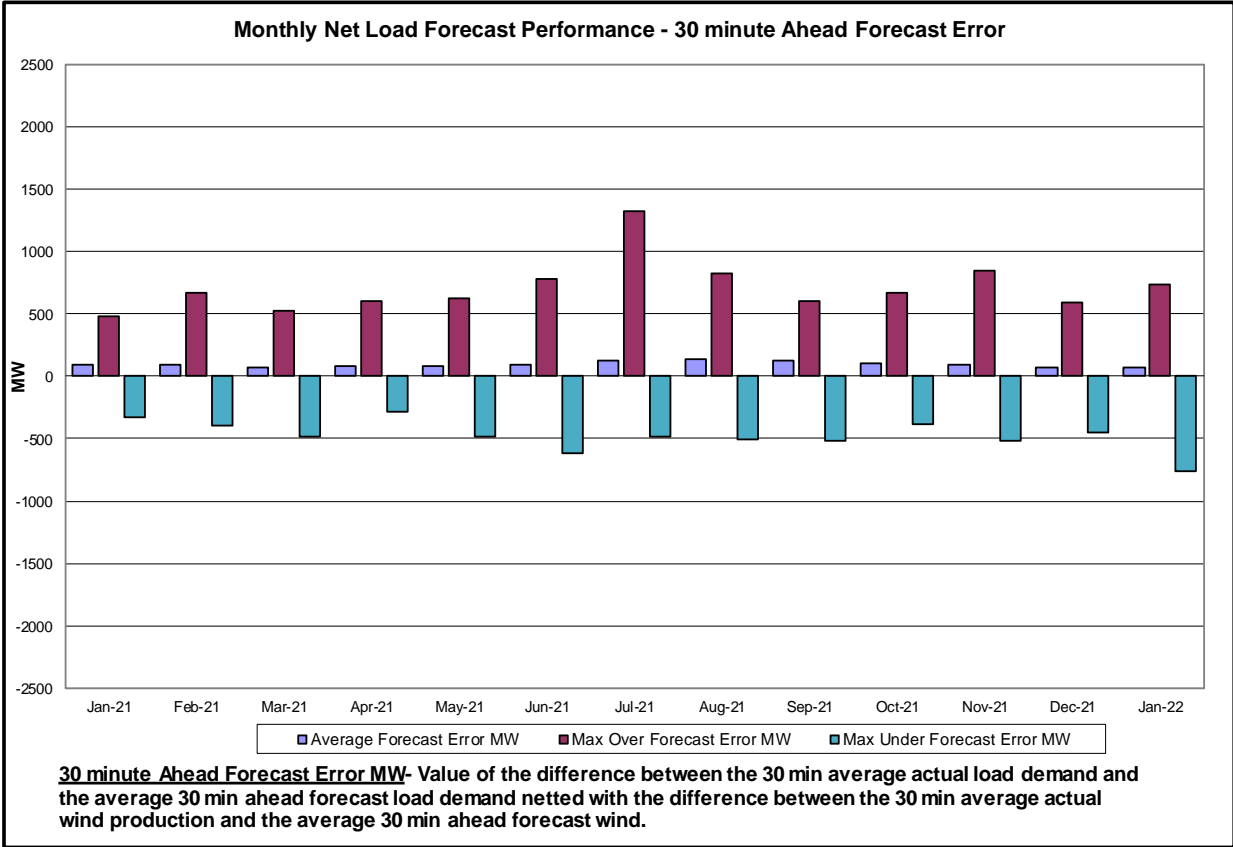


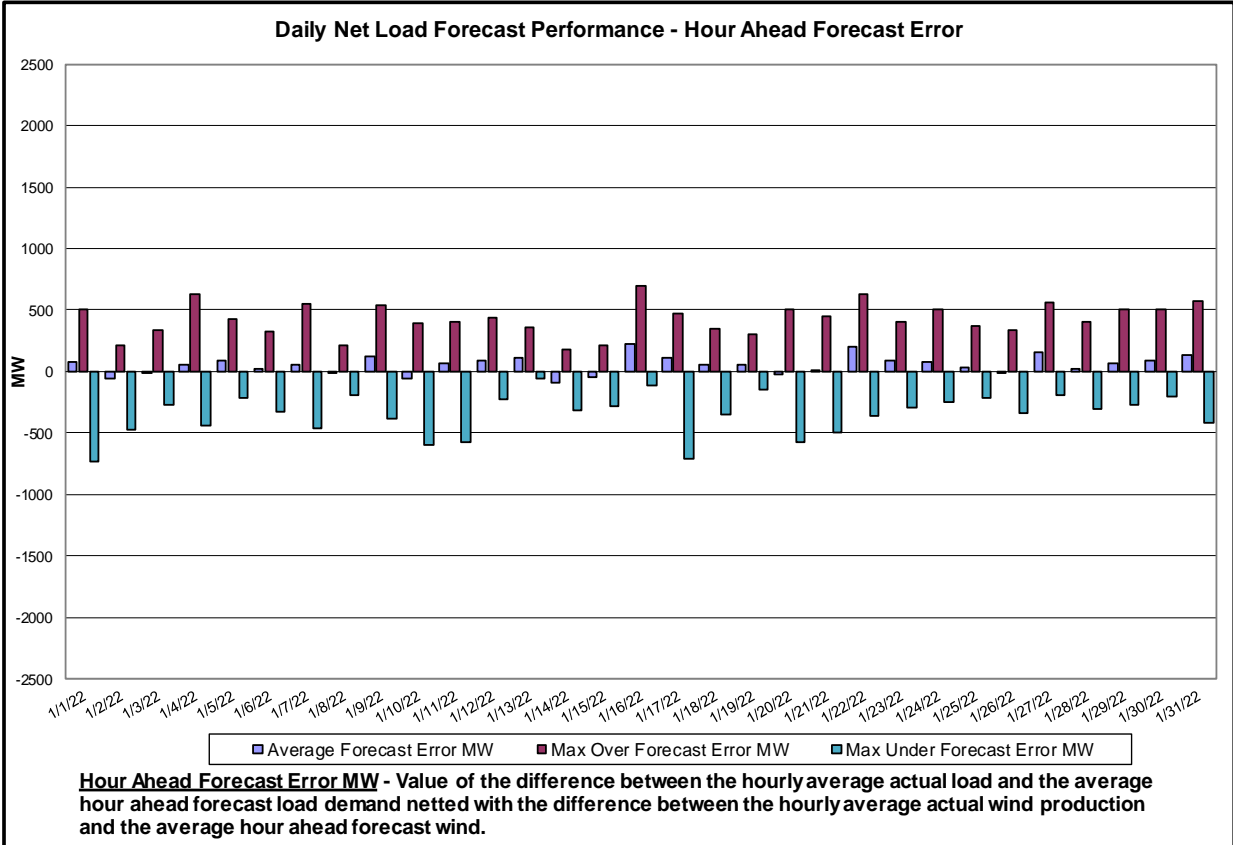
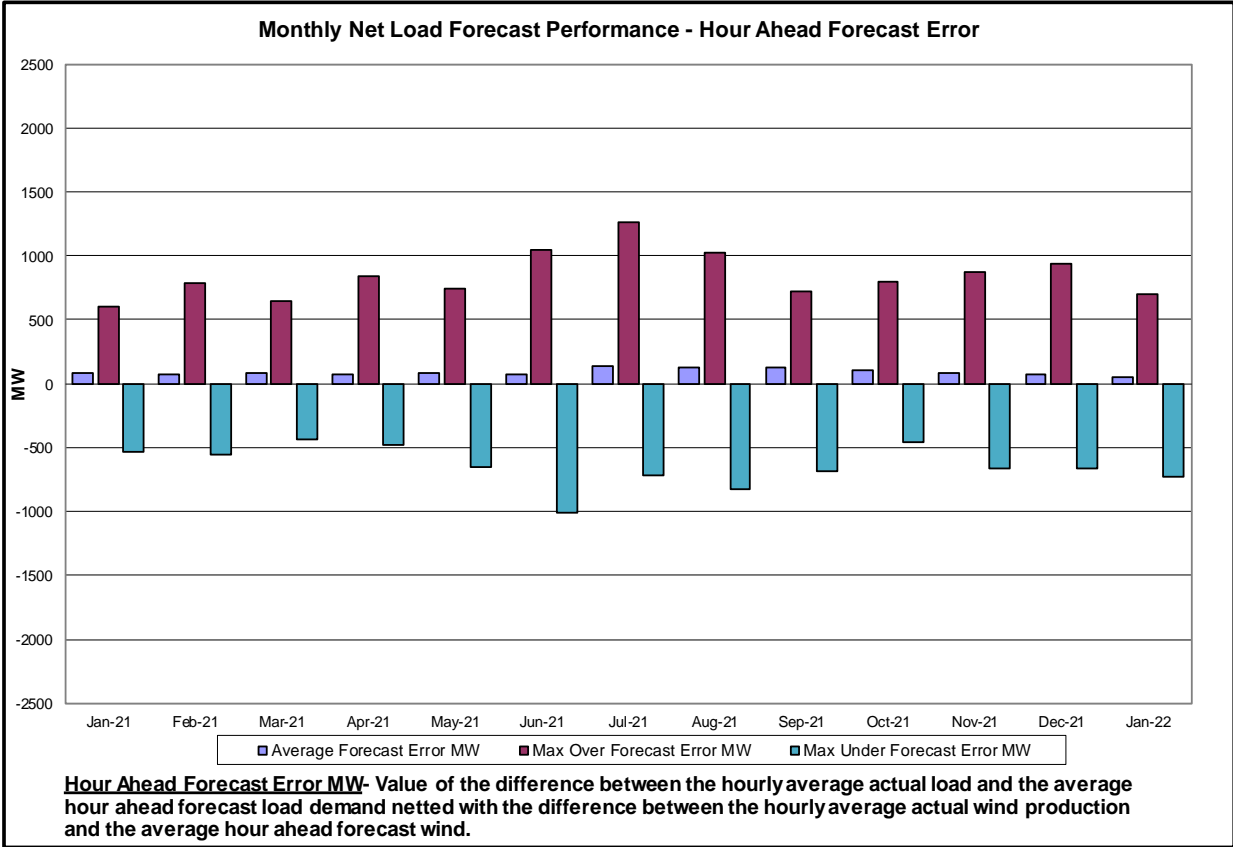




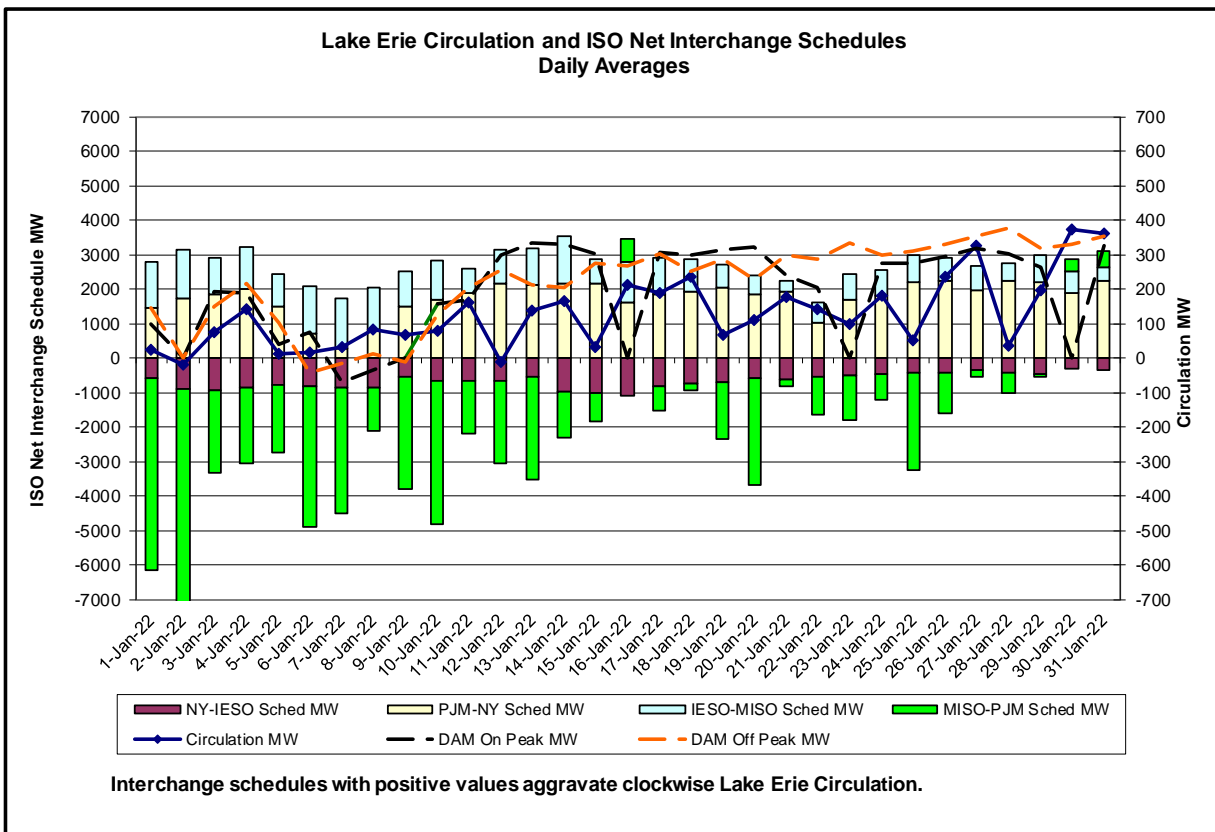
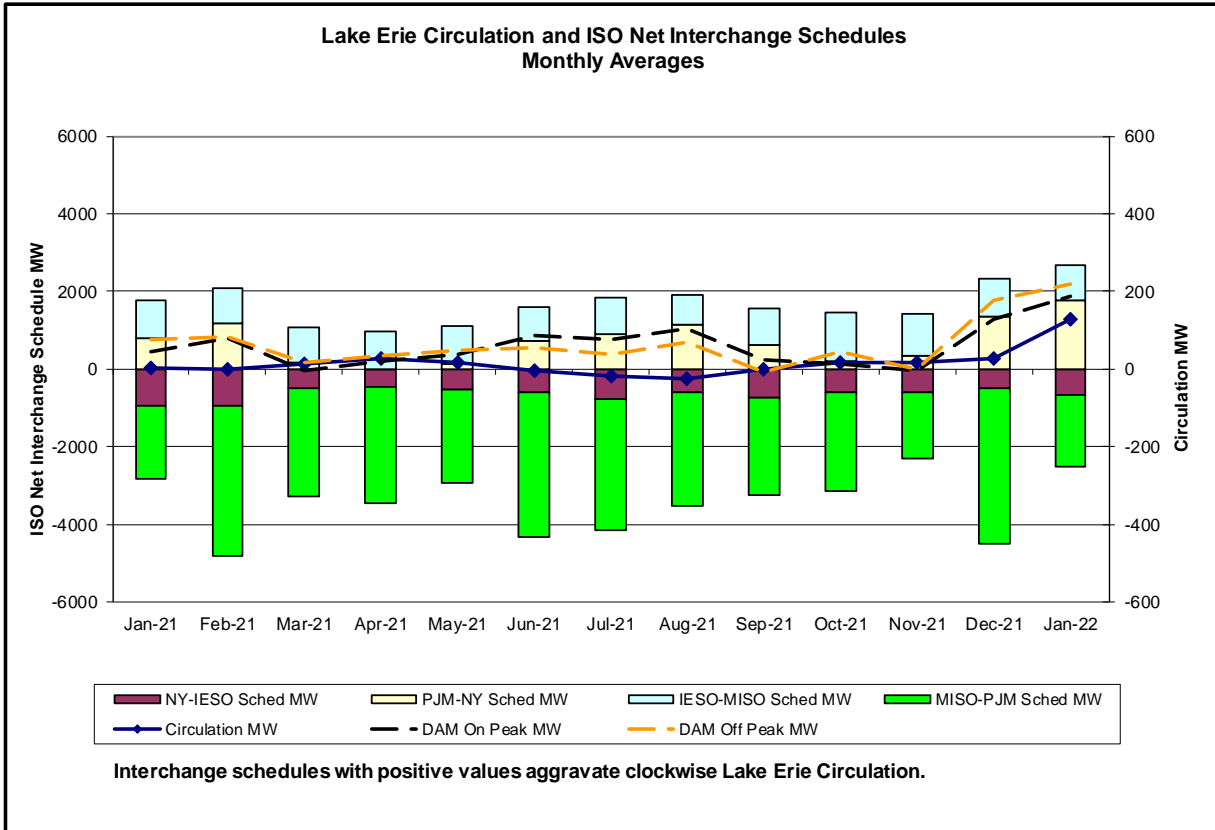




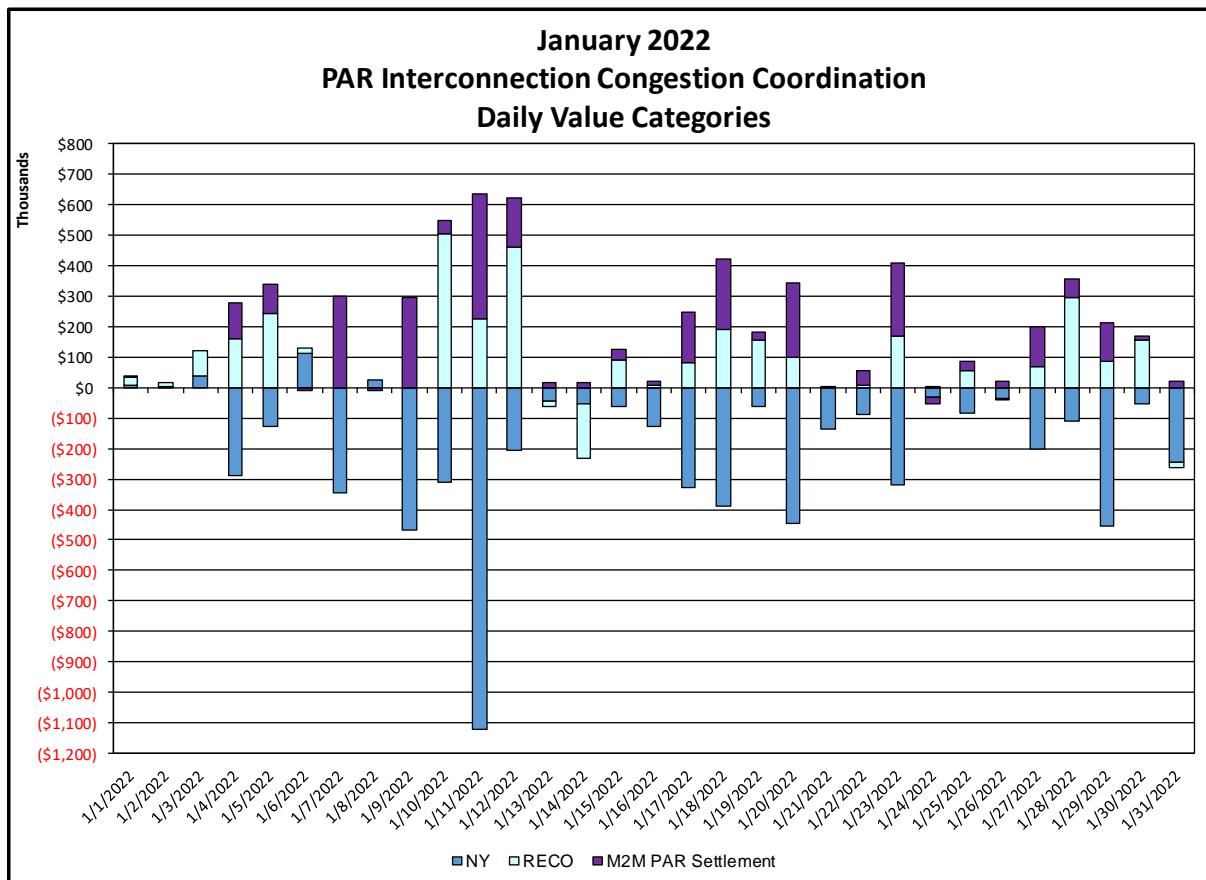
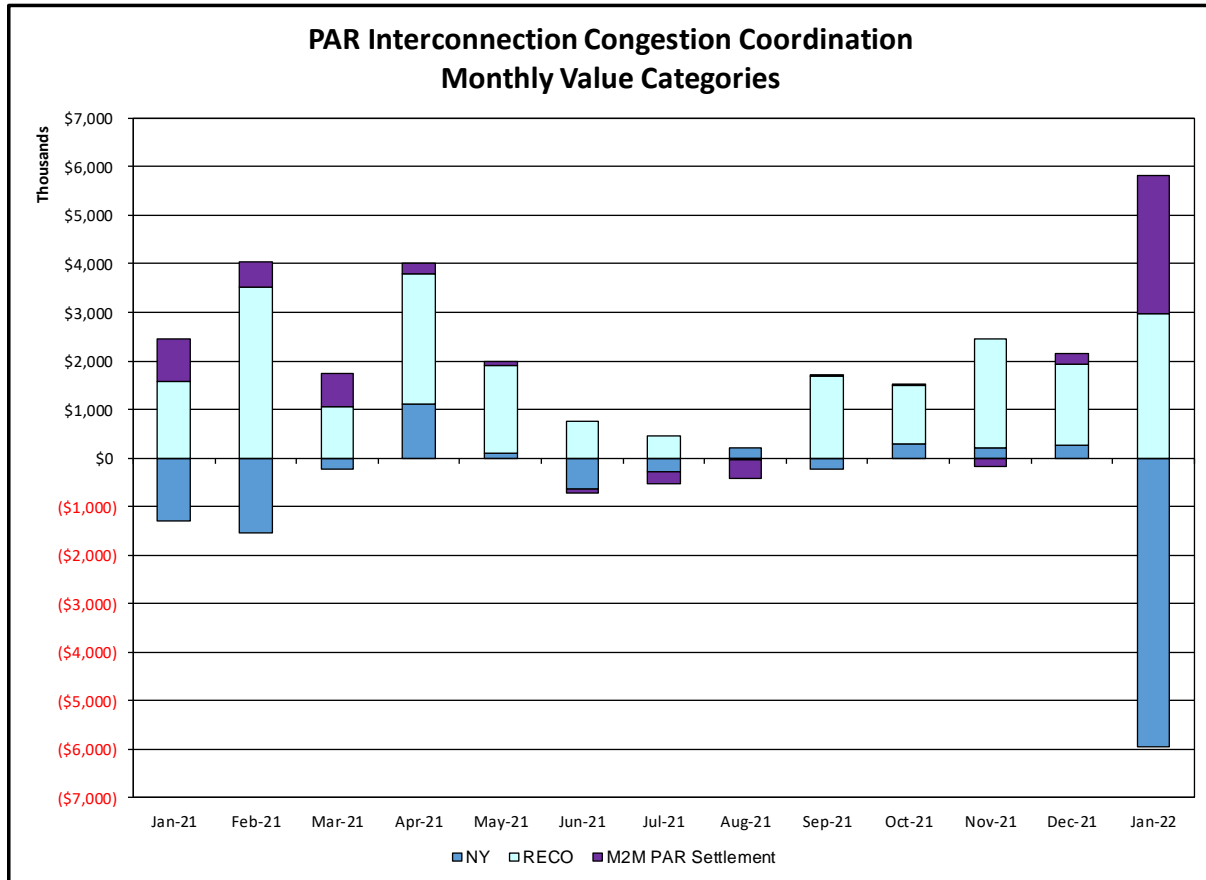






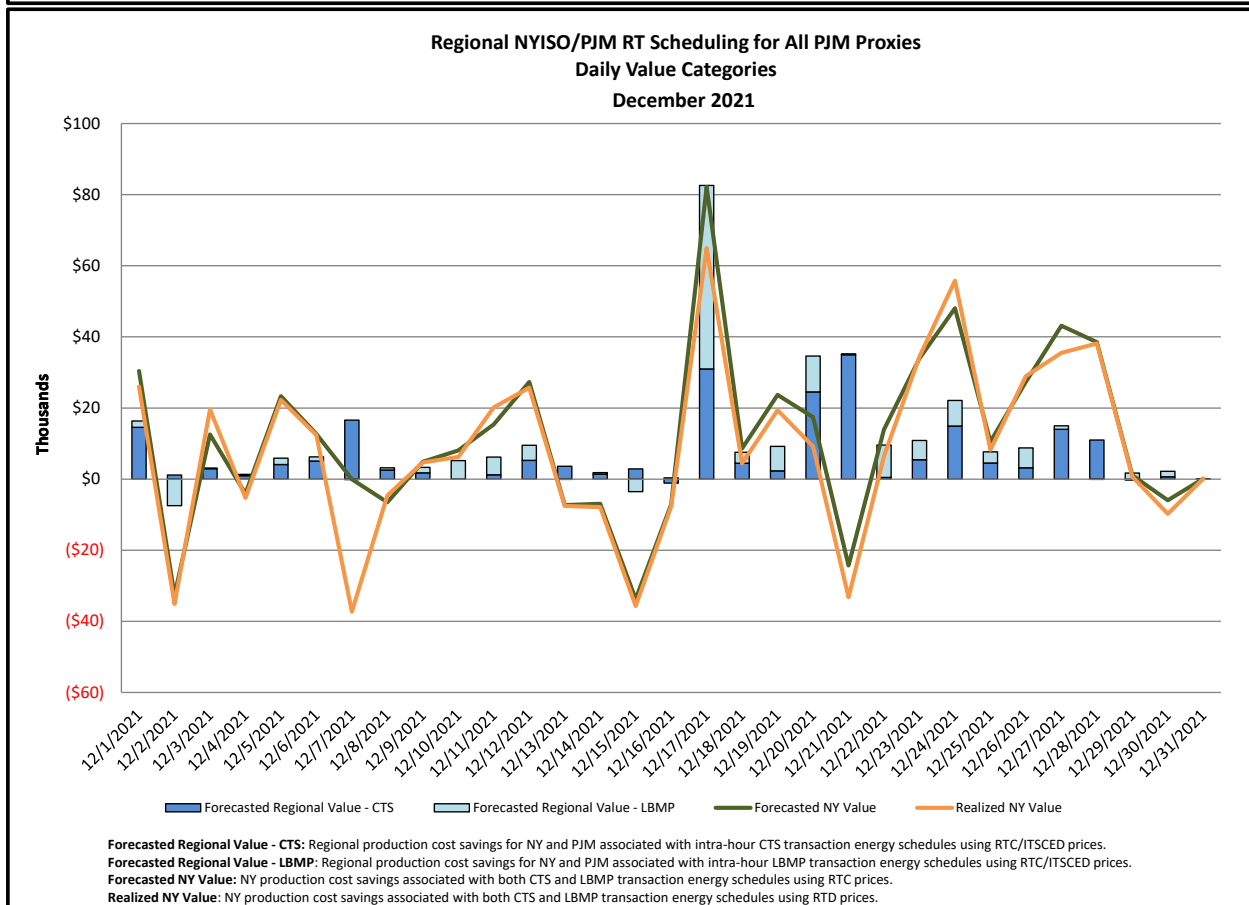
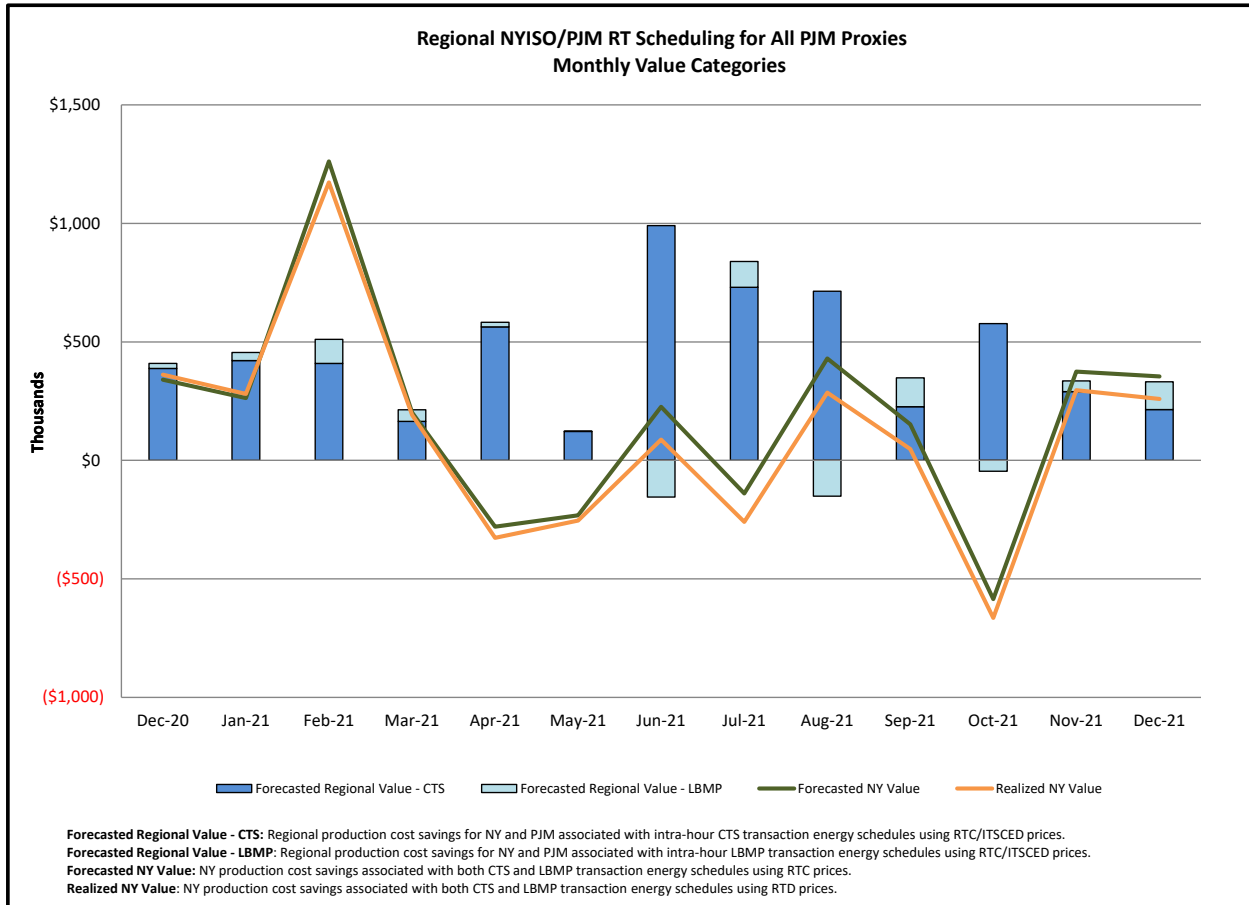


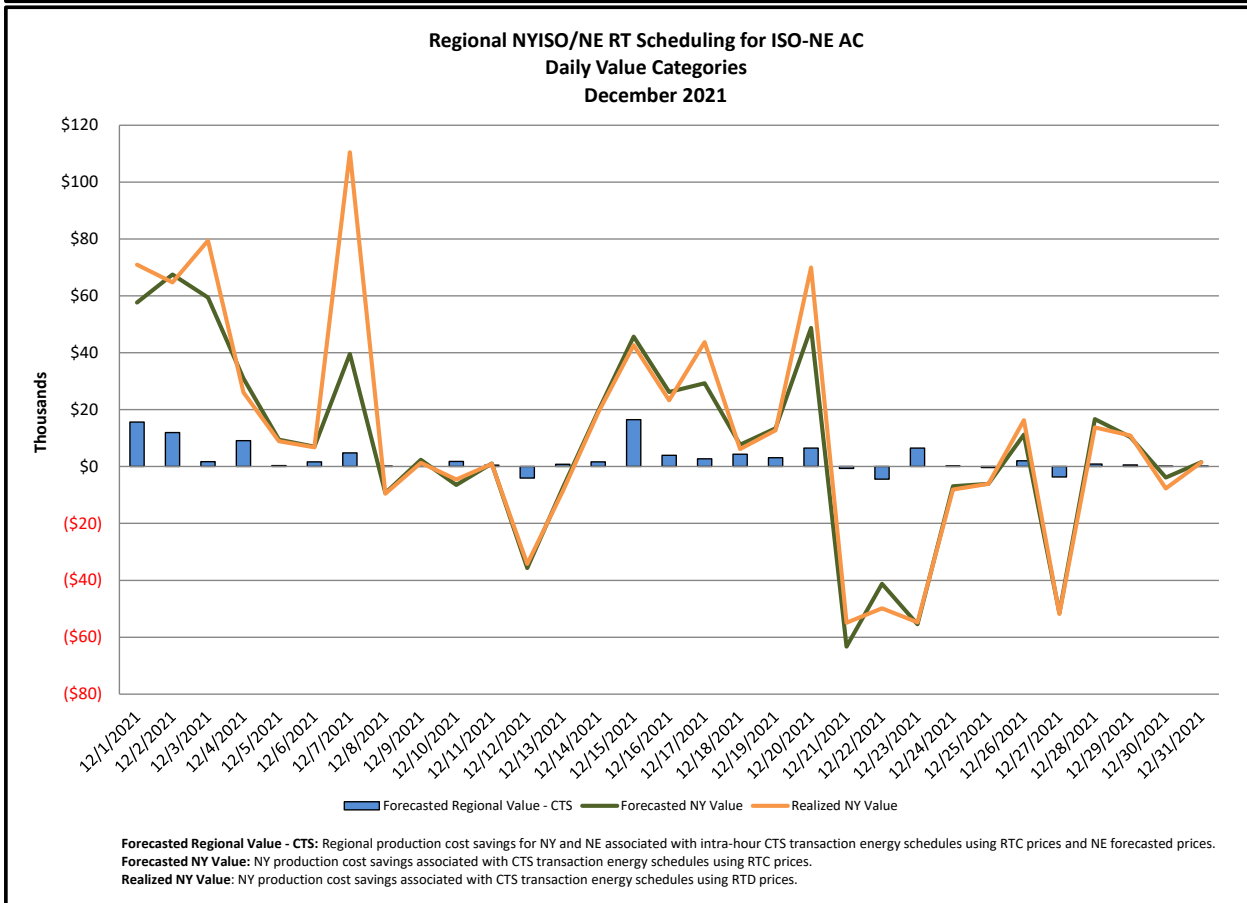
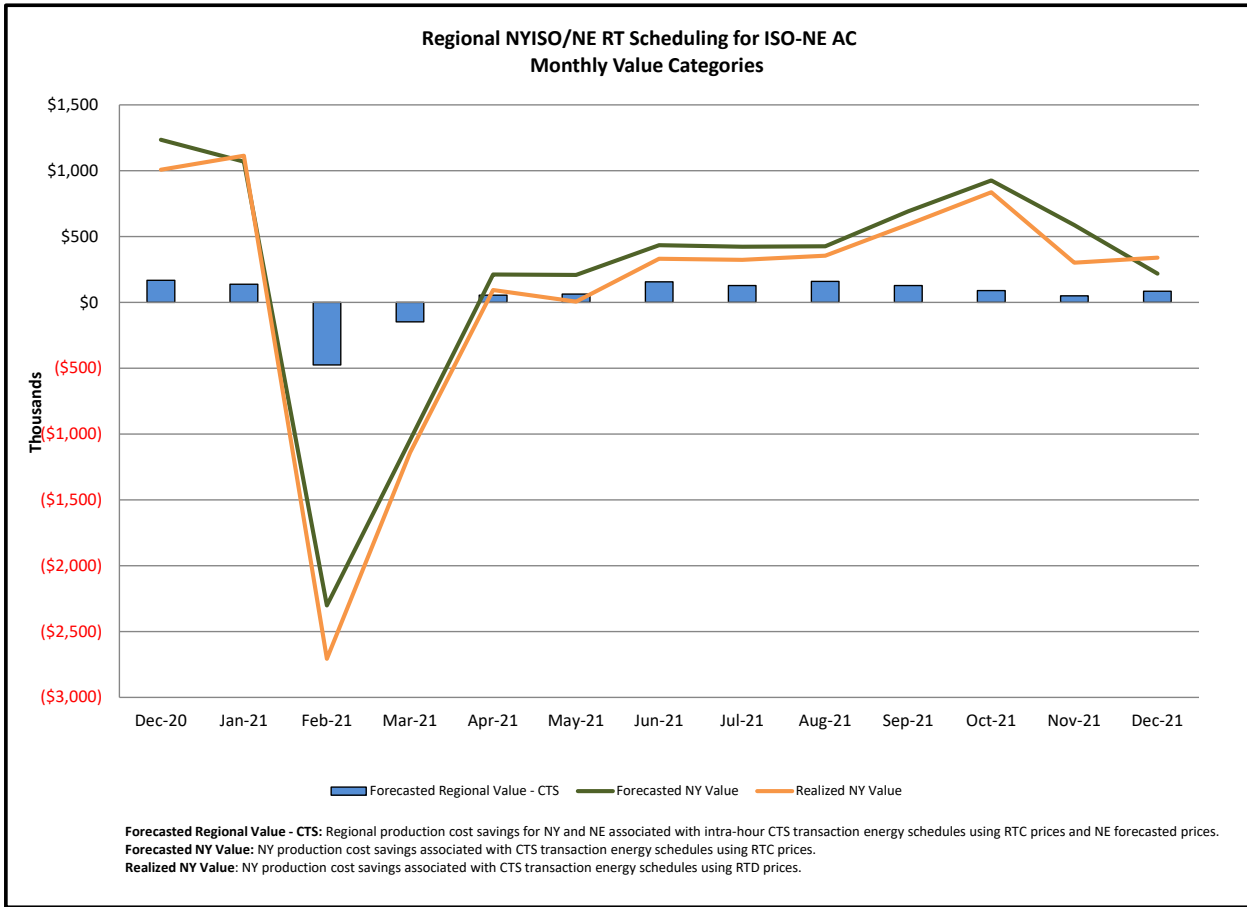
### Broader Regional Market Performance Metrics



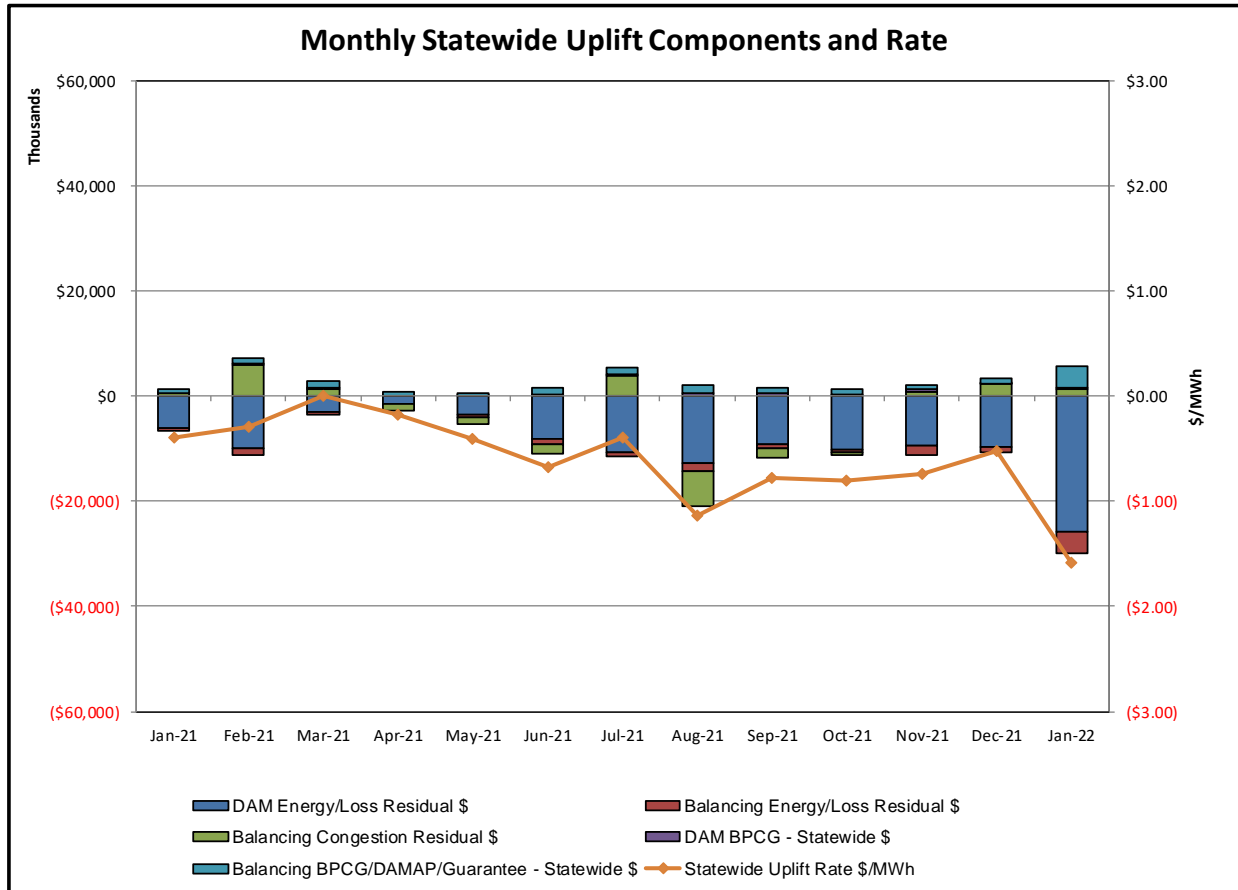
**PAR Interconnection Congestion Coordination**

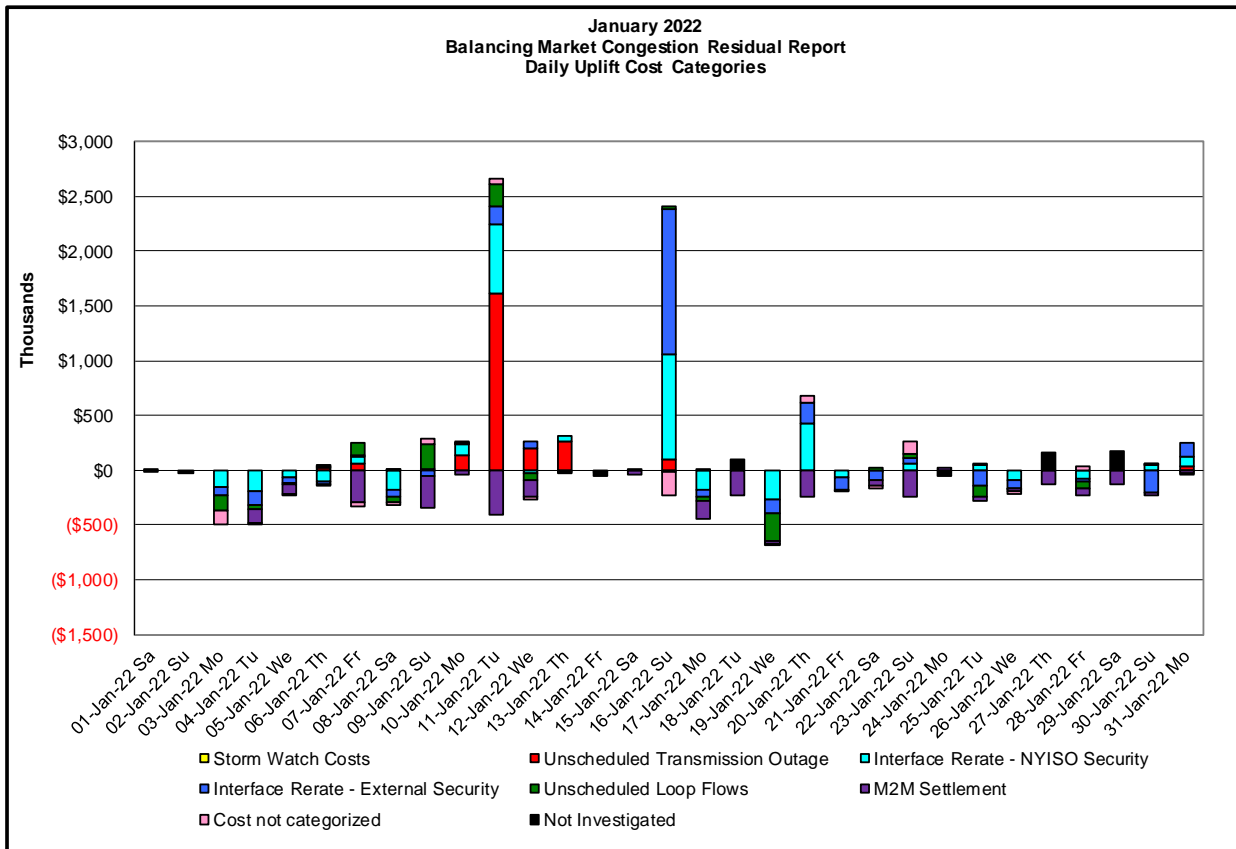
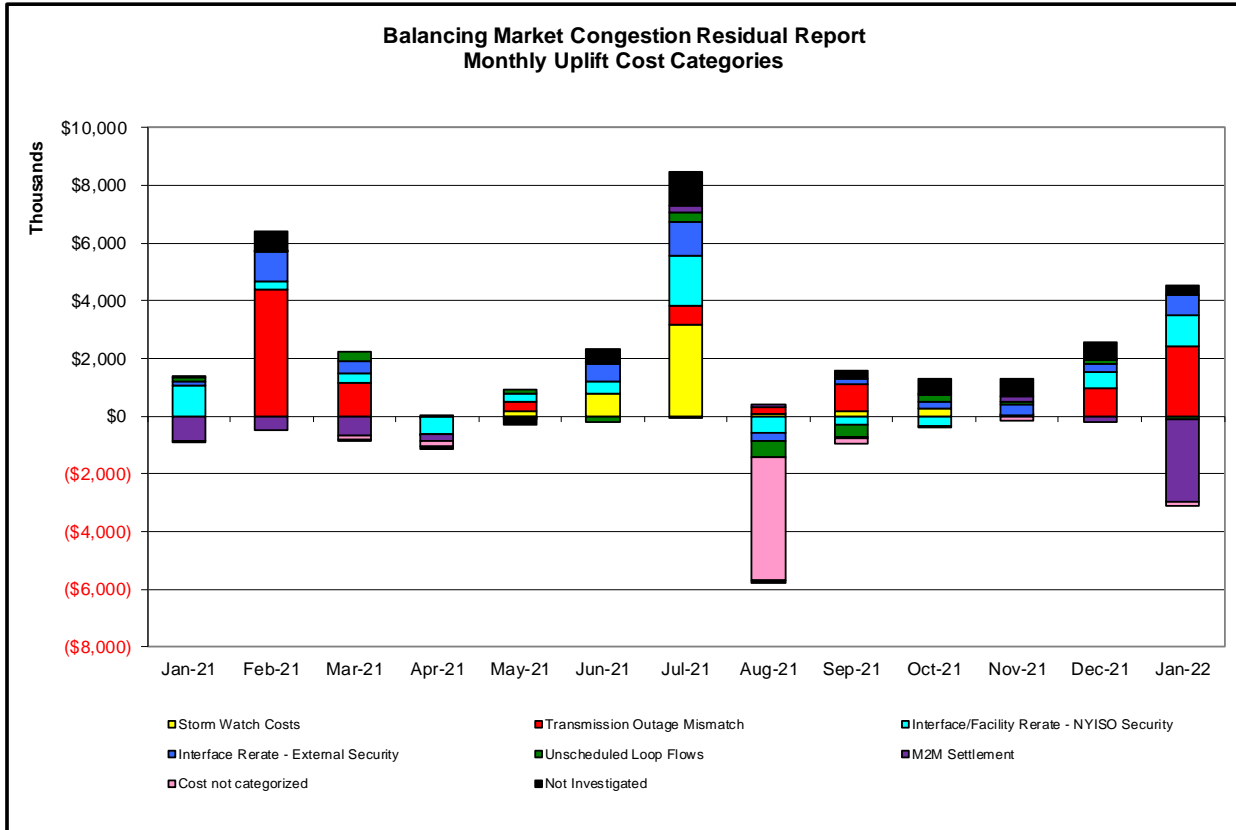
<b><u>Category</u></b>	<b><u>Description</u></b>
<b>NY</b>	Represents the value NY realizes from Market-to-Market PAR Coordination when experiencing congestion. This is the estimated savings to NY for additional deliveries into NY
<b>RECO</b>	Represents the value of PJM's obligation to deliver 80% of service to RECO load over Ramapo 5018. This is the estimated reduction in NYCA congestion due to the PJM delivery of RECO over Ramapo 5018.
<b>M2M PAR Settlement</b>	Market-to-Market PAR Coordination settlement on coordinated flowgates. Through April 2017 this value was included in the NY and RECO categories. The positive sign convention indicates settlement to NY while the negative indicates settlement to PJM.





Market Performance Metrics





Day's investigated in January: 3,4,5,6,7,8,9,10,11,12,13,16,17,19,20,21,22,23,25,26,28,30,31		
Event	Description	January Dates
	Derate Adirondack-Moses 230kV (#MA1) I/o SIN:MSU1&7040& HQ GN&LD PROXY	6
	Derate Central East	13,16,20,22,23,25,31
	Derate Dunwoodie-Shore Road 345kV (#Y50) for I/o SCB:SPBK(RNS2):Y49&M29&Y49_ST	9,20
	Derate Dysinger East	8
	Derate Greenbush-Regeneron 115kV (#9) I/o N.SctInd-Alps 345kV (#2)	19
	Derate Harsnrad-Hinman 115kV (#908) I/o SCB:Dysinger(1B3201) ND2&NH2&DH2	31
	Derate Mortimer-Sweden 115kV (#113) I/o Niagara-STA 255 345kV (#NH2)	4-7,9-11,30,31
	Derate N.Troy-Sycayway 115kV (#16) I/o Berkshire-Alps 345kV (#393)	31
	Derate Niagara 230/115kV (#AT1)	4,5
	Derate NiagaraBlvd-Packard 115kV (#181-922) I/o TWR:PACKARD 77 & 78	6
	Derate Packard 230/115kV (#BK3) I/o TWR:PACKARD 77 & 78	6
	Derate Rocktavern-Ramapo 345kV (#311) I/o TWR:Y88&Y94&TA5	19
	Extended Outage Dysinger-STA255 345kV (#DH1)	10,11
	Extended Outage of Northport-Pilgrim 138kV (#679)	10-12
	Extended Outage Sandbar-Plattsburg 115kV (#PV20)	7
	Forced Outage Buchanan-Eastview 345kV (#W93)	12
	Forced Outage Dunwoodie-ShoreRd 345kV (#Y50)	12,13,16
	Forced Outage Dysinger-Kintigh 345kV (#38)	10
	Forced Outage East Garden City 345kV Bank (#Bk2)	8
	Forced Outage Niagara-Dysinger 345kV (#ND1)	10
	Forced Outage Niagara-Robinson Road 230kV (#64)	6
	Forced Outage Pannel-STA56 115kV (#25)	31
	Forced Outage Ramapo-Buchanon 345kV (#Y94)	12
	Forced Outage SUNY Buffalo-Gardenville 230kV (#79)	13
	HQ_CEDARS - NY Scheduling Limit	6,20,23,25,28,30,31
	HQ_CHAT DNI Ramp Limit	19,22,26
	HQ_CHAT-NY Scheduling Limit	5,6,8,23,25,28,30,31
	IESO_AC-NY Scheduling Limit	11,20,30,31
	Lake Erie Circulation, DAM-RTM exceeds +/-125MW; Central East	3-12,16,17,19,22,23,25,26,30,31
	Lake Erie Circulation, DAM-RTM exceeds +/-125MW; West	3-11,16,21,28,31
	NE_AC Active DNI Ramp Limit	3-7,10-12,16,20-23,26,28,30,31
	NE_AC-NY Scheduling Limit	4,7,8-10,12,16,17,19,28,31
	NE_NNC1385 Scheduling Limit	30,31
	NYCA DNI Ramp Limit	3-8,10-13,16,19-23,25,26,28
	PJM_AC DNI Ramp Limit	7,16,17,19,21,22,25,30
	PJM_AC-NY Scheduling Limit	3-6,12,20-23,25,26,28,30,31
	Uprate Central East	3-12,16,17,19,25,26,28,30
	Uprate East 179th Street-Hellgate 138kV (#15055)	28
	Uprate Mortimer-Sweden 115kV (#113) I/o Niagara-STA 255 345kV (#NH2)	4,8-10,28

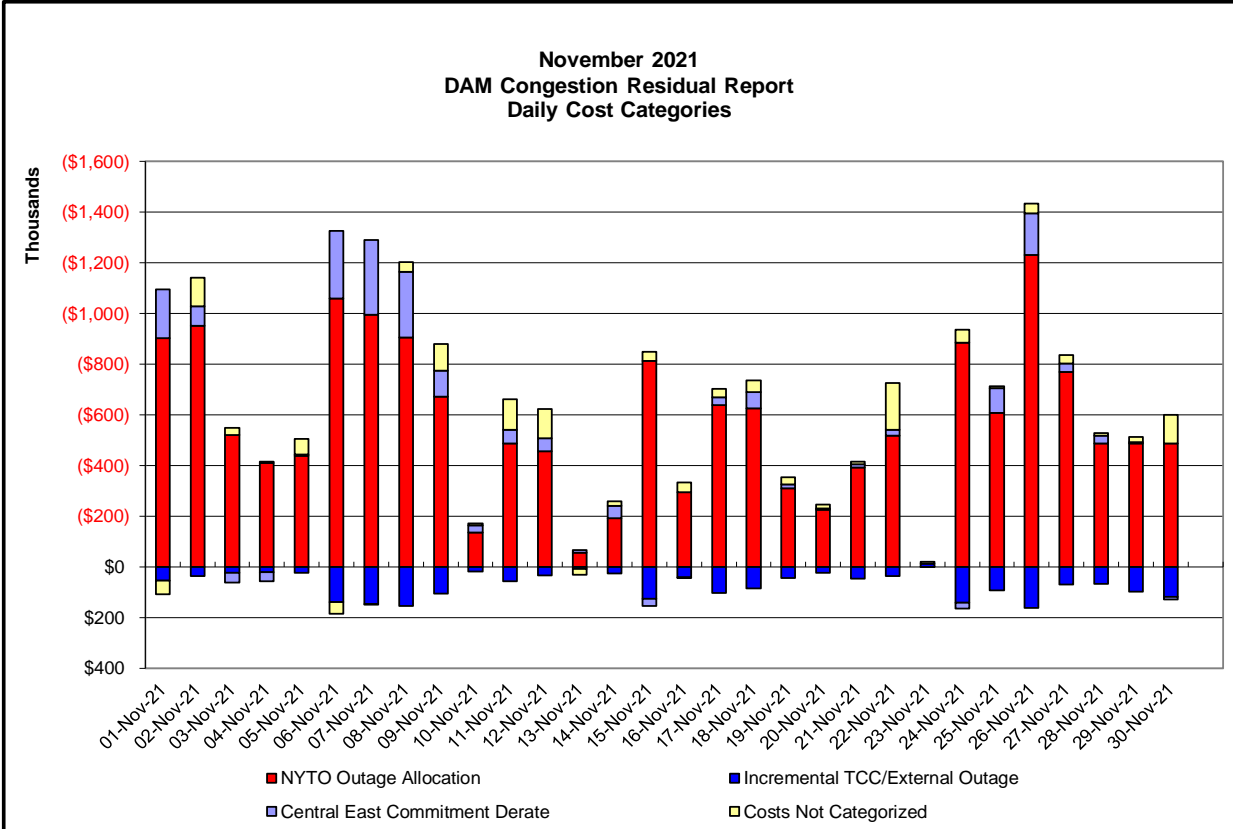
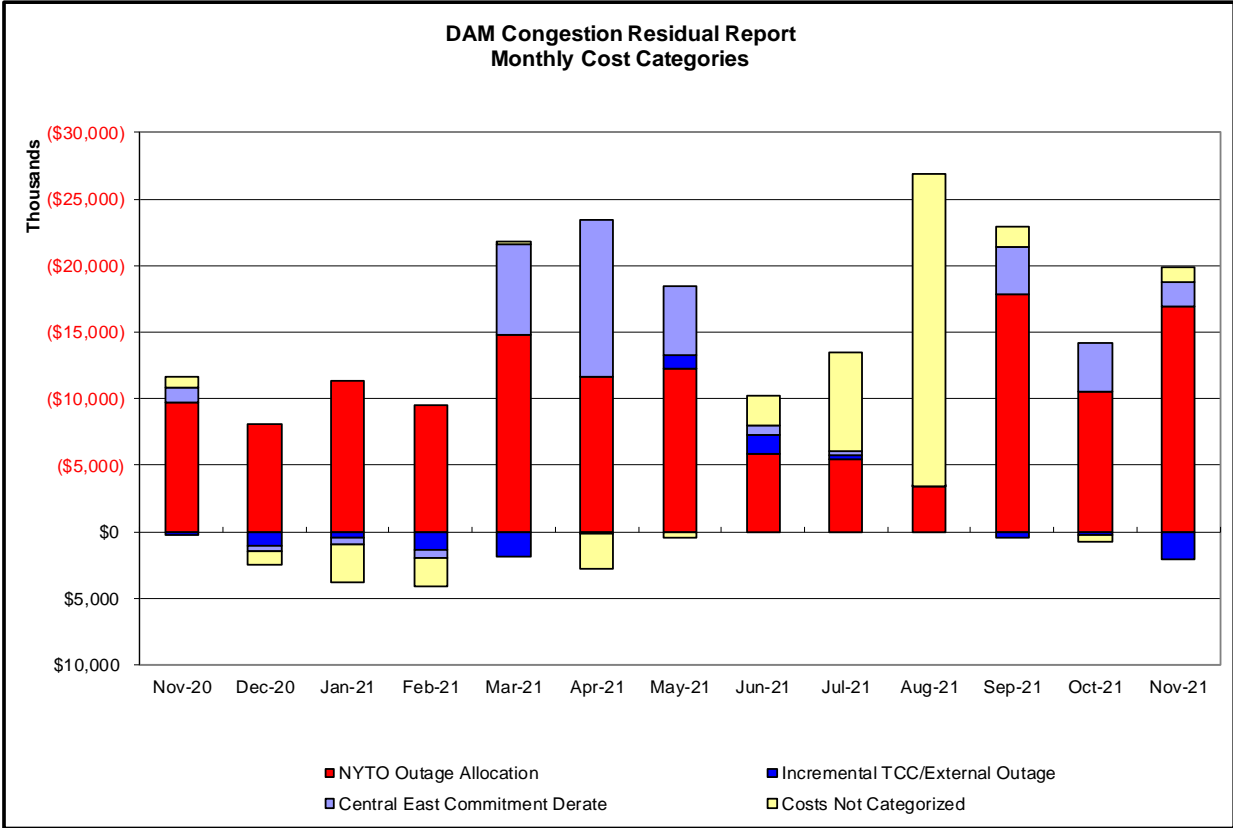


**Real-Time Balancing Market Congestion Residual (Uplift Cost) Categories**

<u>Category</u>	<u>Cost Assignment</u>	<u>Events Types</u>	<u>Event Examples</u>
Storm Watch	Zone J	Thunderstorm Alert (TSA)	TSA Activations
Transmission Outage Mismatch	Market-wide	Changes in DAM to RTM transfers related to transmission outage mismatch	Forced Line Outage, Unit AVR Outages, Early Line Return from Outage
Interface/Facility Rerate - NYISO Security	Market-wide	Changes in DAM to RTM transfers not related to transmission outage	Interface/Facility Rerates due to RTM voltages
Interface Rerate - External Security	Market-wide	Changes in DAM to RTM transfers related to External Control Area Security Events	TLR Events, External Transaction Curtailments
Unscheduled Loop Flows	Market-wide	Changes in DAM to RTM unscheduled loop flows impacting NYISO Interface transmission constraints	DAM to RTM Lake Erie Loop Flows exceeding +/- 125 MW
M2M Settlement	Market-wide	Settlement result inclusive of coordinated redispatch and Ramapo flowgates	

**Monthly Balancing Market Congestion Report Assumptions/Notes**

- 1) Storm Watch Costs are identified as daily total uplift costs
- 2) Days with a value of BMCR less M2M Settlement of \$100K/HR, shortfall of \$200K/Day or more, or surplus of \$100K/Day or more are investigated.
- 3) Uplift costs associated with multiple event types are apportioned equally by hour



**Day-Ahead Market Congestion Residual Categories**

<u>Category</u>	<u>Cost Assignment</u>	<u>Events Types</u>	<u>Event Examples</u>
NYTO Outage Allocation	Responsible TO	Direct allocation to NYTO's responsible for transmission equipment status change.	DAM scheduled outage for equipment modeled in-service for the TCC Auction.
Incremental TCC/External Outage Impacts	All TO by Monthly Allocation Factor	Allocation associated with transmission equipment status change caused by change in status of external equipment or change in status of equipment associated with Incremental TCC.	Tie line required out-of-service by TO of neighboring control area.
Central East Commitment Derate	All TO by Monthly Allocation Factor	Reductions in the DAM Central East_VC limit as compared to the TCC Auction limit, which are not associated with transmission line outages.	

