

3.6 VOLTAGE CONTINGENCY EVALUATION

Table 12 lists the contingencies that were evaluated for each configuration studied.

Table 12 - Voltage Contingency Definitions

Contingency	Code	Elements lost	Line IDs	Voltage (kV)
Pre-Fault	0	None (base transfer)	-	-
Edic-N.Scot 345	1	Edic-New Scotland	14	345
Marcy-N.Scot 345	2	Marcy - New Scotland	18	345
Marcy South N	3	Marcy-Coopers Edic –Fraser	UCC2-41 EF24-40	345 345
Marcy South S	4	Marcy –Coopers Fraser – Coopers	UCC2-41 33	345 345
Fitz-Edic-N.Scot	5	Fitzpatrick - Edic Edic - New Scotland	FE1 14	345 345
Volney- Marcy	6	Volney-Marcy	19	345
STBK @ R3108	7	Volney – Marcy Edic – Marcy	19 UEI7	345 345
Tower 34/42	8	Coopers -Rock Tavern Coopers – Middletown	CRT-42 CMT-34	345 345
STBK Edic R70	9	Edic - Marcy Edic Porter Transformer Edic Porter Transformer	UEI7 T2 T4	345 345/230 345/115
Ravenswood 3	L	Ravenswood 3		
Seabrook 1	M	Seabrook 1		
PH2 DC @ 1500 MW	P	New England Phase II		
NS-Bus77-Alps	T	Edic - New Scotland New Scotland - Alps New Scotland - Leeds New Scotland Transformer	14 2 93 T2	345 345 345 345/115
NS-Bus99 - Gilboa	U	Marcy - New Scotland New Scotland - Gilboa New Scotland - Leeds New Scotland Transformer	18 GNS-1 94 T1	345 345 345 345/115

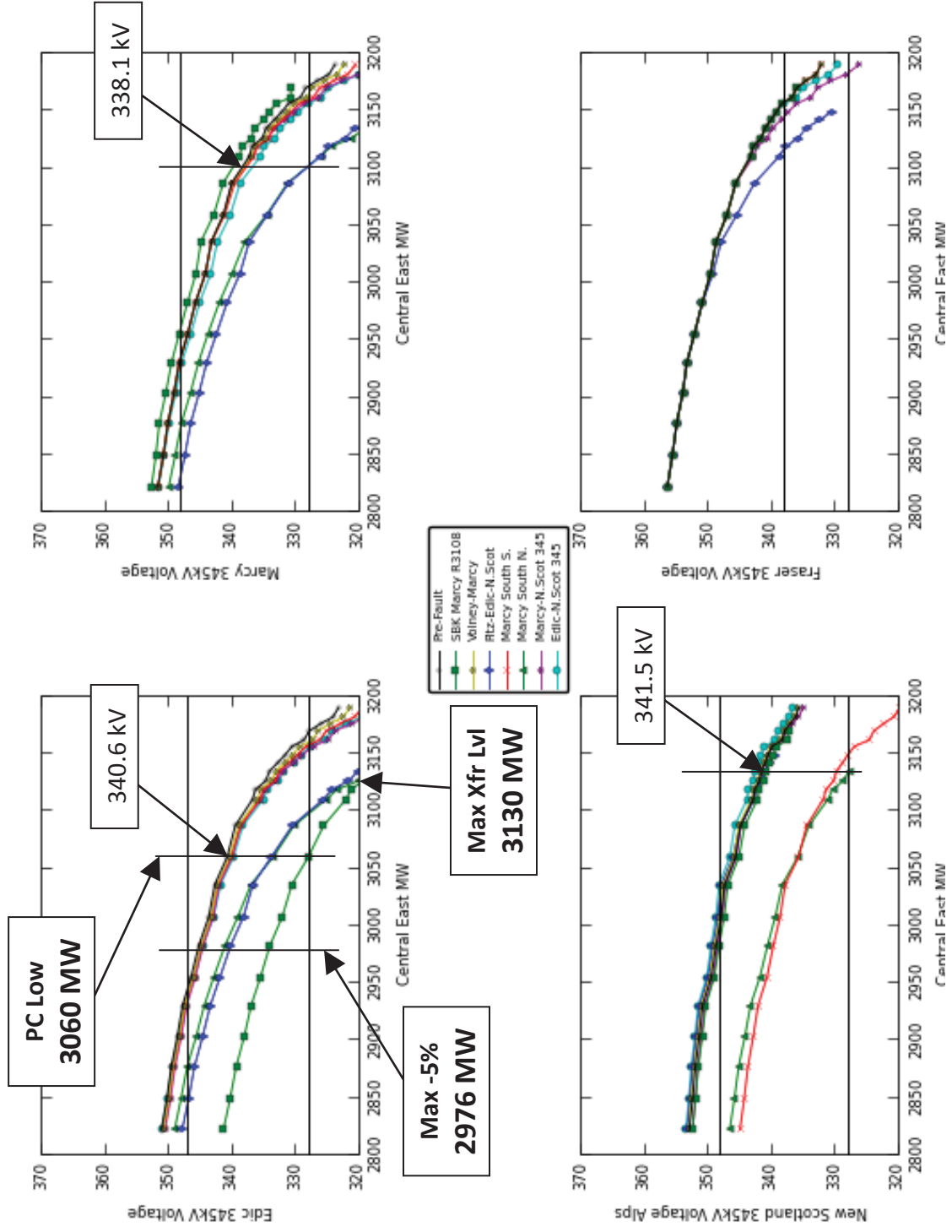


Figure 1 - 3/5 Oswego AVRs IS, Figure 1/4

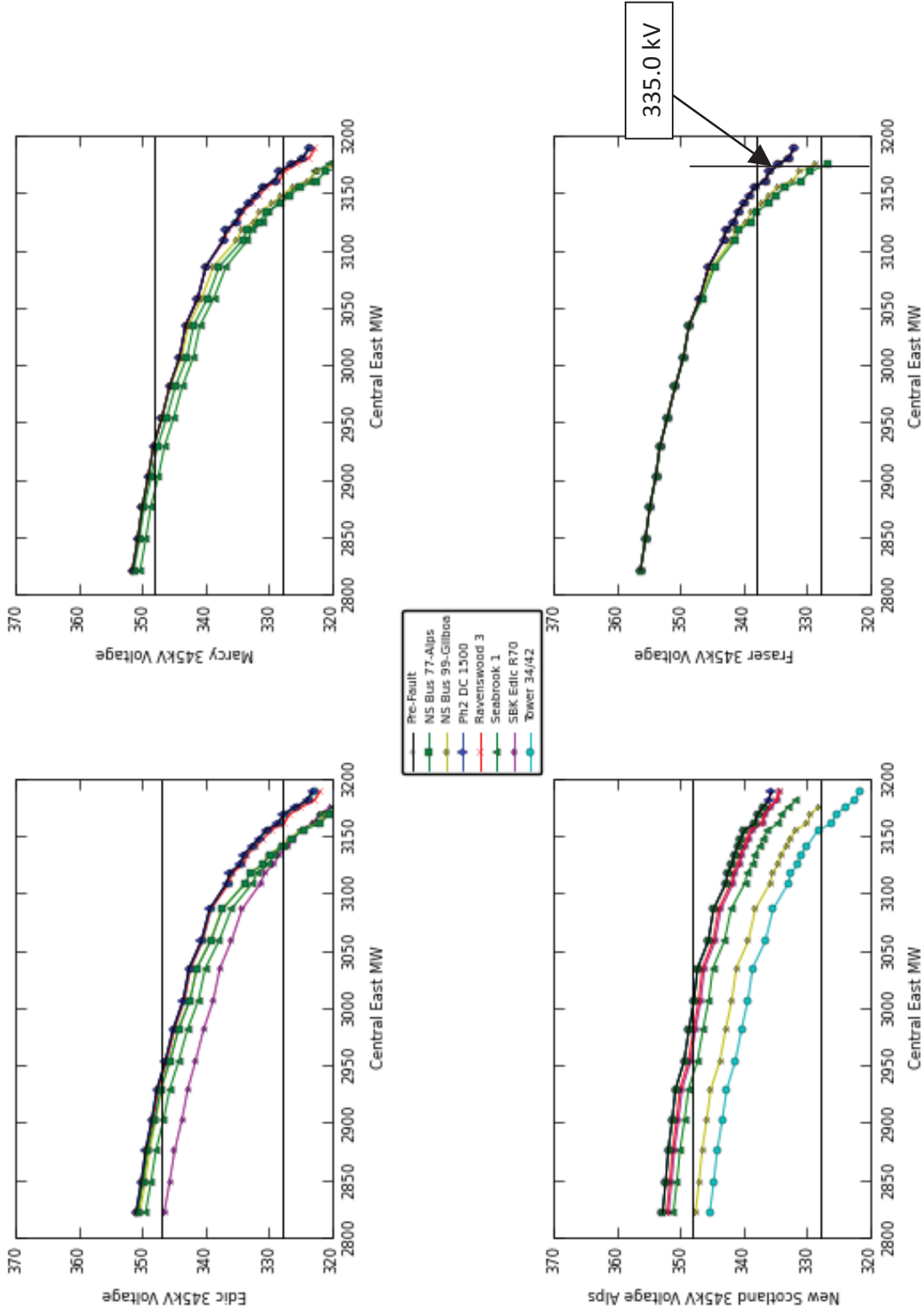


Figure 2 - 3/5 Oswego AVR's IS, Figure 2/4

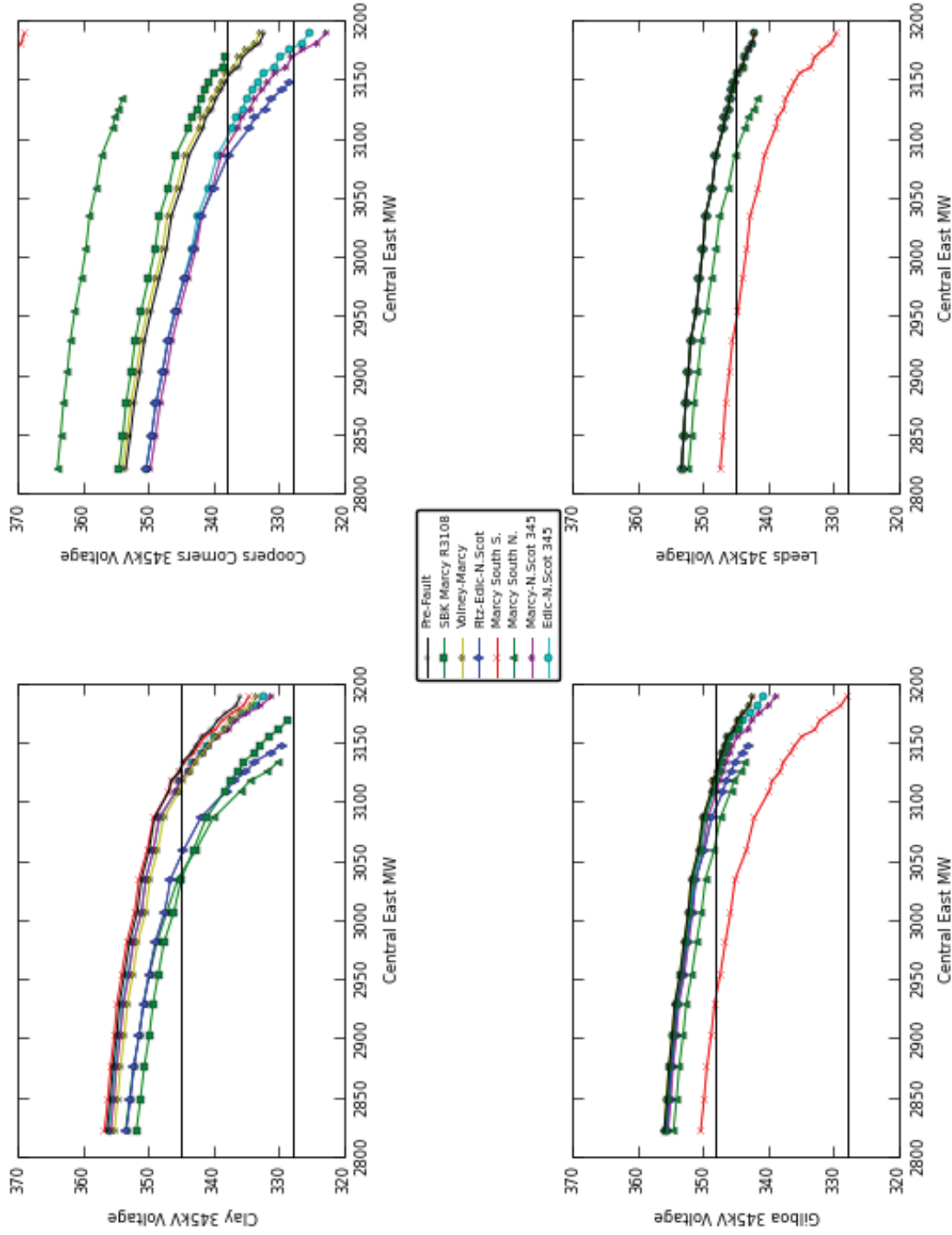


Figure 3 - 3/5 Oswego AVR's IS, Figure 3/4

2013 SUM CE VCAP 3/5 OSW BASE UC3445 DE2198 CE2823 MS2213

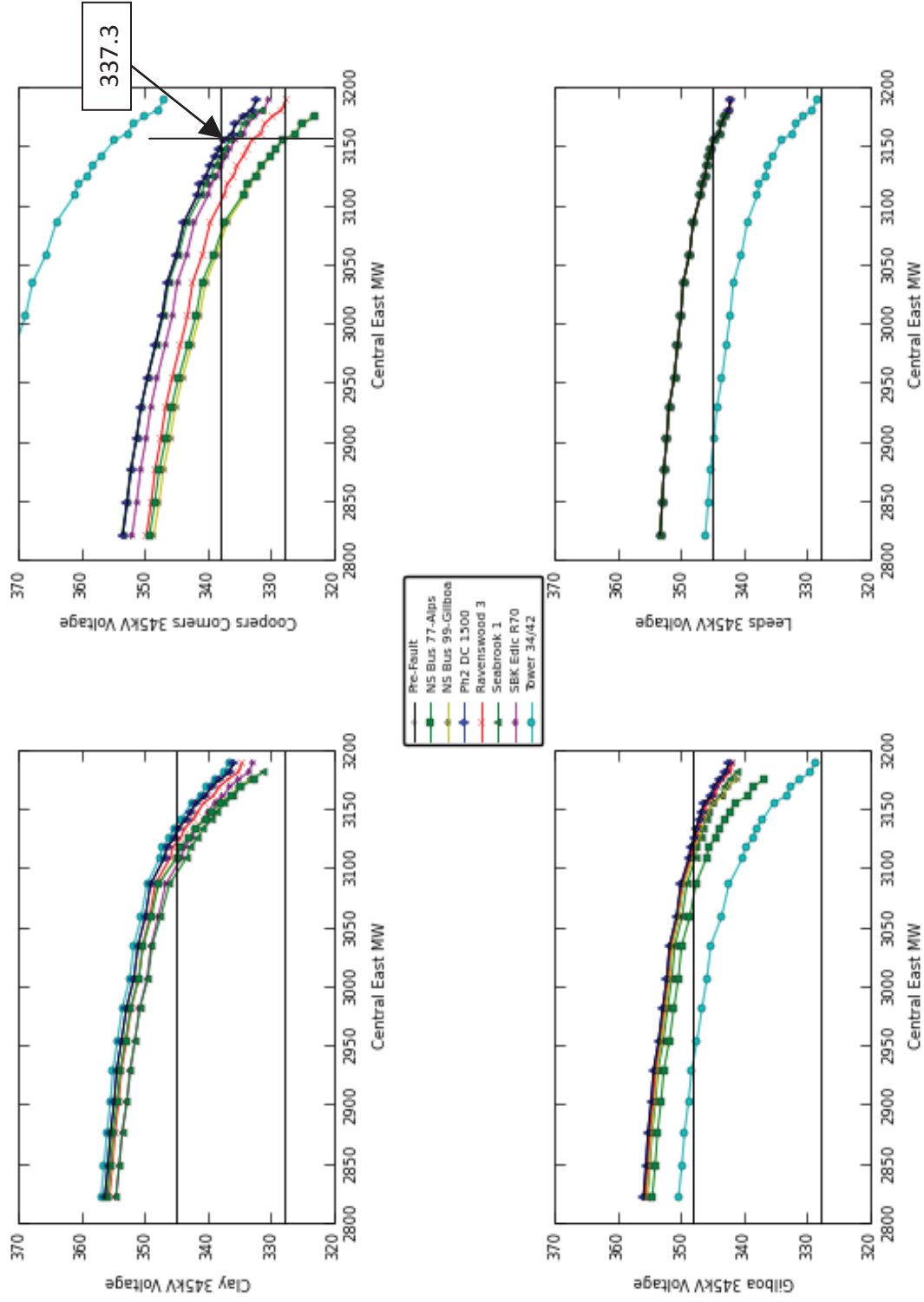


Figure 4 - 3/5 Oswego AVRs IS, Figure 4/4