



Update on Study Year Parameter Testing

Ryan Carlson

Capacity Market Operations – Resource Adequacy

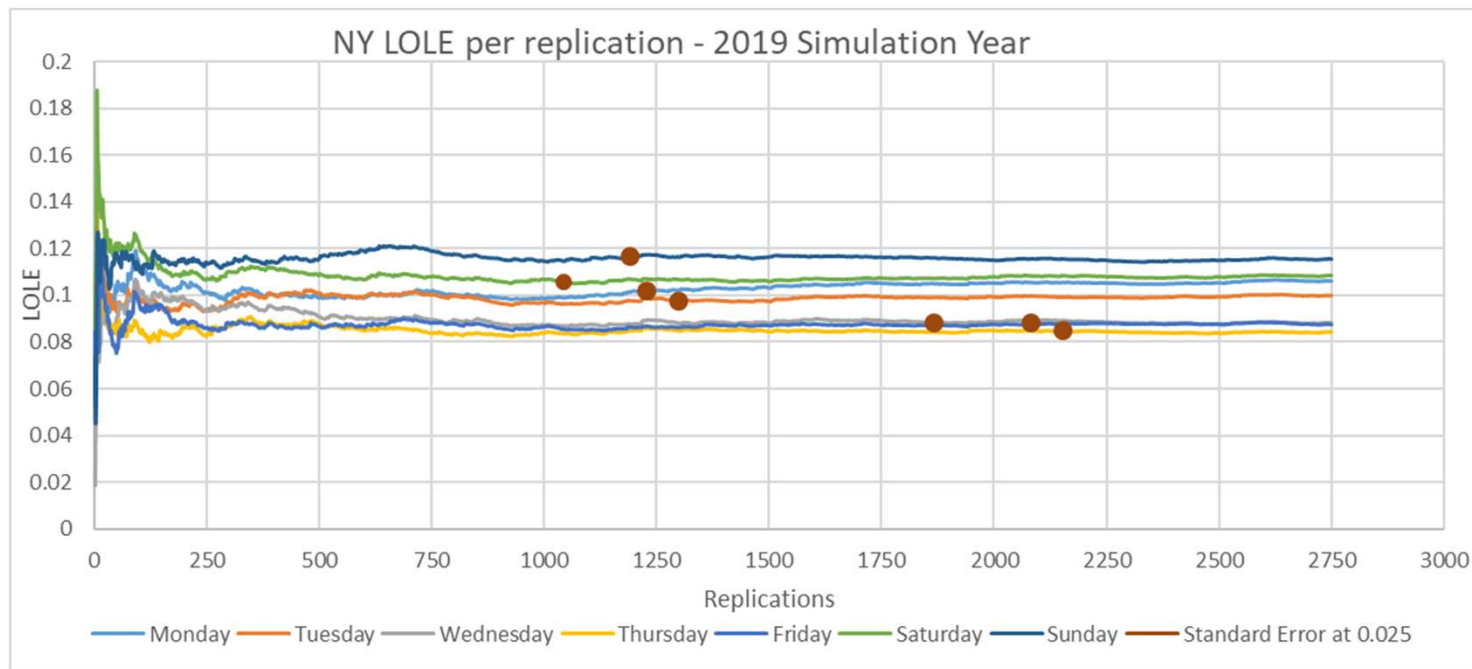
ICS Meeting #229

March 4, 2020, NYISO, Rensselaer NY

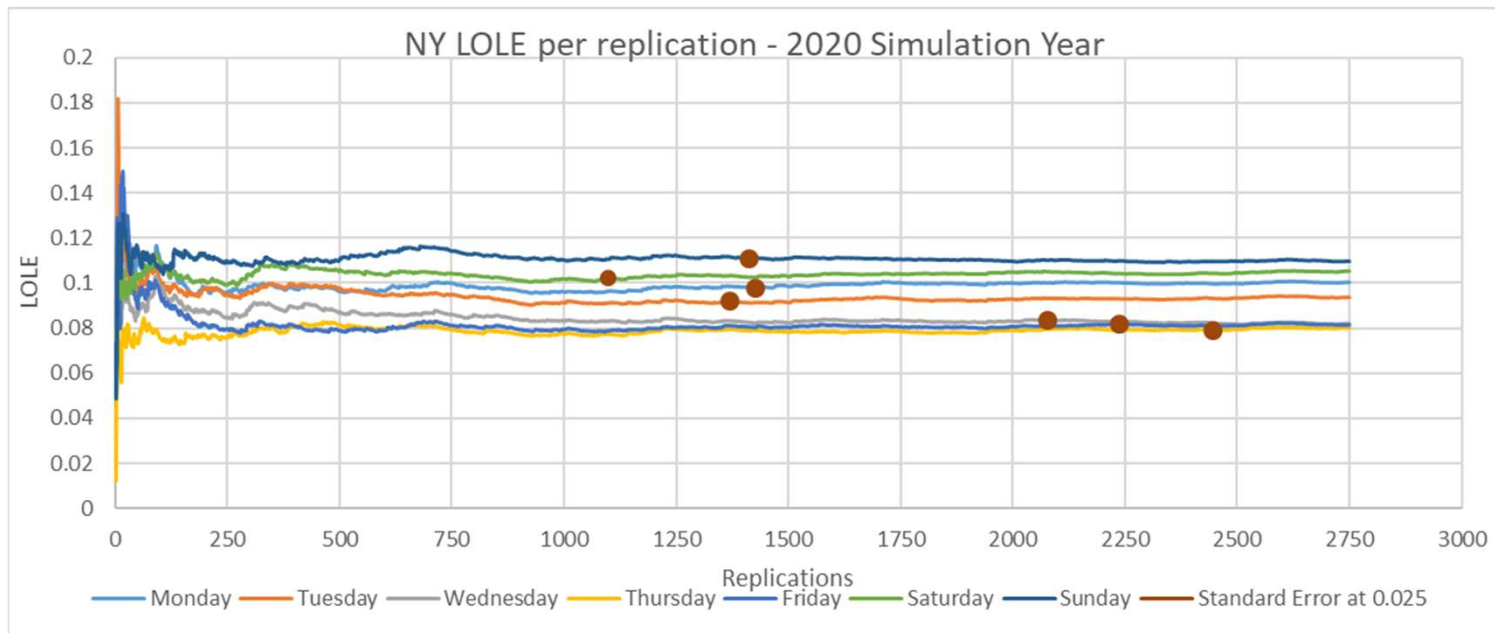
Current Status

- **Tested GE functionality that holds the start day of the year constant**
 - Effective in both load and intermittent shapes (wind, solar, landfill gas and run of river)
- **Removed leap year for 2020 simulation year**
 - Caused unintuitive shifting
- **Functionality works but volatility remains**
- **Change in LOLE can be attributed to:**
 - Change in maintenance profile
 - Forced outages in interfaces
 - Thermal derates
 - Other underlying profiles

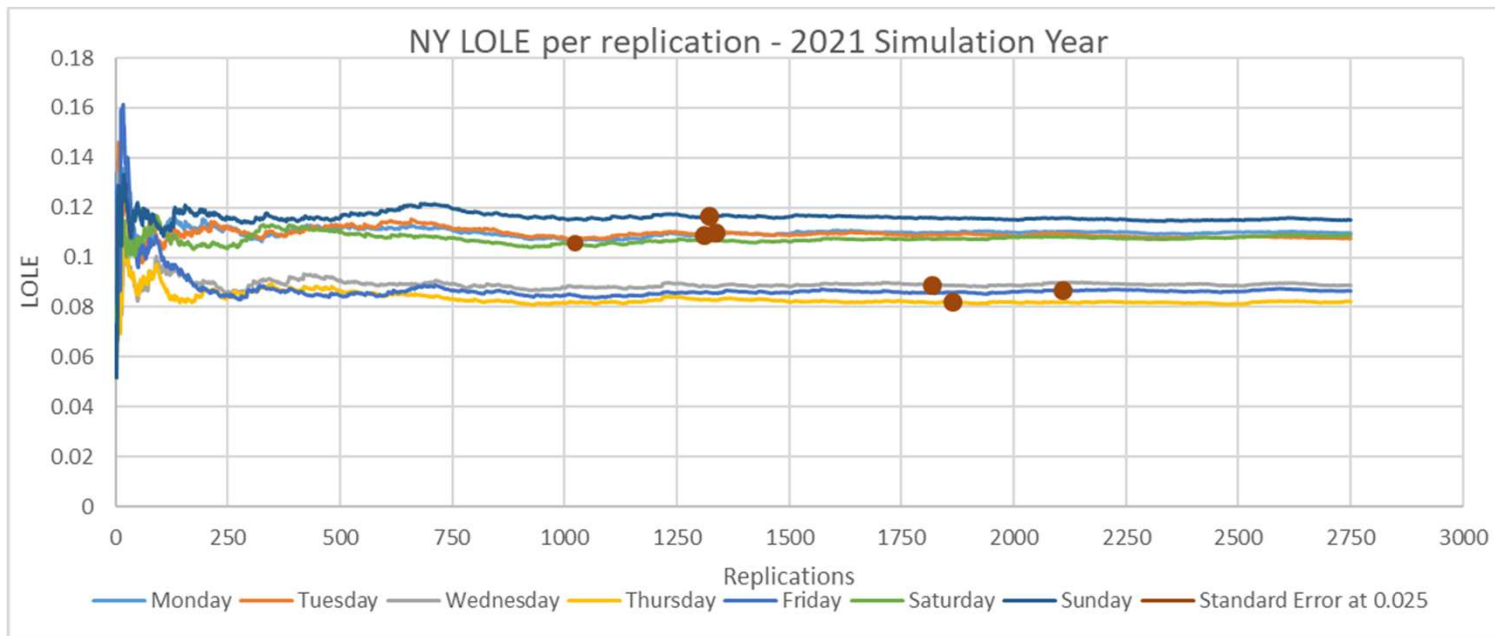
Results - 2019 Simulation Year



Results - 2020 Simulation Year



Results - 2021 Simulation Year



Final LOLE Results

Day	2019 LOLE	2020 LOLE	2021 LOLE
Monday	0.10607	0.1003	0.10973
Tuesday	0.09985	0.09362	0.10758
Wednesday	0.0882	0.08198	0.08876
Thursday	0.08422	0.08005	0.08226
Friday	0.08745	0.08135	0.08651
Saturday	0.10842	0.10531	0.10884
Sunday	0.11549	0.10963	0.115

Next Steps

- **More in depth look at what is causing the variability**
- **Test on isolated NY system**
- **Resolution and implementation of a methodology**
 - Standard start day
 - Generic study year
 - Old methodology of allowing the start day to change
 - Other

Our mission, in collaboration with our stakeholders, is to serve the public interest and provide benefit to consumers by:

- Maintaining and enhancing regional reliability
- Operating open, fair and competitive wholesale electricity markets
- Planning the power system for the future
- Providing factual information to policymakers, stakeholders and investors in the power system



Questions?

Questions or comments can be sent to

IRM@nyiso.com